

About Us

NUX is one of three brands owned by Cherub Technology Co., Ltd. NUX made its industry debut in 2006. Whether a professional singer-songwriter, hobbyist, weekend warrior, or the next star, NUX has a wide range of analog and digital products to satisfy any musical genre. We are constantly looking for new ideas for better products and excellent customer service. We have the same passion for creating our products as those who use our products to create.

Cherub Hi-Tech Park

No.10, Keji 9th Road, Tangjiawan Town, Zhuhai High-Tech Zone, Guangdong 519080, China
Tel: +86 756 3689211

Shenzhen Branch

Rm 507, Block 1, Nanhai E-Cool, 6 Xinghua Rd, Shekou, Nanshan District, Shenzhen, Guangdong 518067, China
Email: info@cherubtechnology.com
Tel: +86 755 26869866

USA Branch

2401 208th Street, Unit C5, Torrance, CA 90501, United States
Email: usa@cherubtechnology.com
Tel: +1 626-357-1275

Your Local Dealer

NUX

nuxaudio.com

More Than Expected

- Wireless Systems

Effects

Amplifiers

Pro-Audio
- Digital Pianos

Digital Drums

Digital Wind Instrument

Accessories

25

digital catalog

NES-1

Digital Wind Instrument

Easy Operations Amazing Sounds

The NUX NES-1 is a digital wind instrument that integrates various tonal controls, user presets, Bluetooth, MIDI, built-in 5.8GHz wireless system, and much more.

The NES-1 features a physical saxophone key layout, which is easy to control while avoiding accidental notes. It also supports trumpet fingering to expand your playing options. With octave keys, you can play notes across four octaves, and easily achieve techniques like overblowing.

The NES-1 has a selection of 50 sounds, including woodwinds, brass, strings, synths, Chinese instruments and other styles.



Pearl White

Bordeaux Red

Space Gray

Large Screen, Intuitive UI

NUX NES-1 is equipped with a high-definition full-color LCD screen. The UI interface is intuitive and simple. Each sound represented with a picture and is clearly divided into four groups.



Sounds Great Without External Speakers

The NES-1 has two speakers: a 2-inch 5-watt speaker for full-range sounds and a 1-inch tweeter for high/ultra-high frequencies.

These speakers are loud enough for personal enjoyment and small group settings, eliminating the need to carry an extra speaker for performances.



Changing Sounds While Playing

The NES-1 features a M key design which you can use to quickly switch between three pre-stored sounds. When switching, you can monitor the current sound number in real time through the second screen at the top.

When you need to change keys during the same song, you can also use the M key to store the sound in different keys, and quickly recall them while performing.



Reverb Presets

Reverb is an essential effect for every live musician. To achieve the ideal effect, many parameters need to be adjusted such as size, early reflections, decay, decay time, dry/wet ratio, etc. For beginners, this can be time-consuming.

We have set up five reverb presets based on practical scenarios, including daily performances, accompaniment performances, ambient tone solos, and large reverb solos. You can simply switch between these five levels of reverb for instant gratification with ease.

Dual Playing Controls

To enhance your controls over the tones, the NUX NES-1 offers a reed pressure controller in the mouthpiece, along with a pitch bend wheel that you operate with your right thumb.

The mouthpiece can be used to control pitch like a saxophone or to create a vibrato effect. The pitch bend wheel can also change the pitch and introduce portamento, allowing you to expand the pitch range by a major third for unique playing styles.



Sampling Sounds with Musicians

With our 20 years of experience in the R&D of software, hardware and sound design for digital musical instruments, we worked together with renowned musicians for the best sampling and processing for your playing experience.



Built-In 5.8GHz Wireless System

When it's time to connect the NES-1 to a mixer or PA system, we have integrated NUX 5.8GHz wireless technology for plug-and-play convenience.

The NES-1 itself is a wireless transmitter, and at the bottom of the instrument, we designed a magnetically storage compartment for the wireless receiver, which also serves to recharge it. Simply take out the receiver, turn on the wireless function, plug it into an amp or mixer, and start playing wirelessly up to 4.5 hours on a single charge.



Wireless receiver

Bluetooth Connection

You can effortlessly stream music from your smart device by connecting it to the NES-1 via Bluetooth. Additionally, you can send both the accompaniment music and the NES-1 sounds to an amplifier through Line Out or the built-in wireless system.

MG-30

VERSATILE MODELER

DESIGNED BY GUITARISTS | Developed by passionate engineers, made for working musicians.

The NUX MG-30 is a versatile modeler, equipped with 2 powerful DSPs for high-definition White-Box Amp Modeling algorithm (TSAC-2K) and Core-Image post-effects. Since the announcement of the bestselling compact modeler MG-300, users have been blown away by its sound and playability.

We're proud to say that the MG-30 upgrades that experience by offering a 2K audio resolution. The rugged aluminum alloy enclosure gives you peace of mind with its sturdiness that's road ready. The included Send/Return and external EXP jacks offer versatility and flexibility all guitarists need.

Moveable signal blocks, optional parallel post-effect routing and 1024 samples IR resolution make the MG-30 a true tonal game changer in the industry.



TS/AC 2K

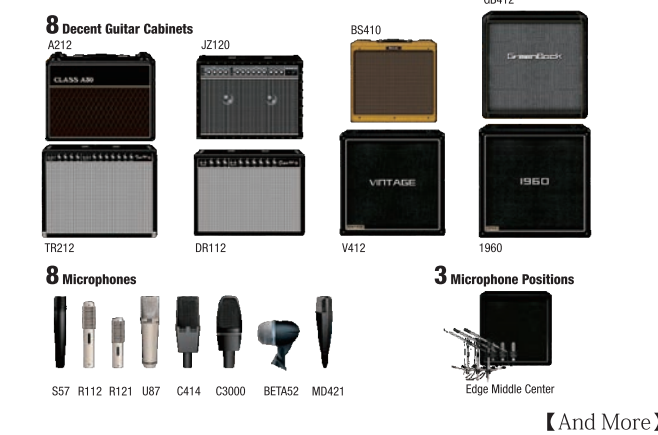
WHITE-BOX Amp Modeling with Power Amp BIAS Tweaking

Working musicians don't need hundreds of mediocre amp models. Knowing this, the MG-30 focuses on 35 classic essentials, and made each and every one live up to the standards of the most demanding players, based on our 2K high-definition White-Box Amp Modeling Algorithm (TS/AC-2K). The MG-30 also offers a BIAS parameter on valve amp models; tweak it to adjust the warmth of your sound. Included in our top-shelf collection are: 28 electric guitar amp models, 2 acoustic amp models, 5 bass amp models.



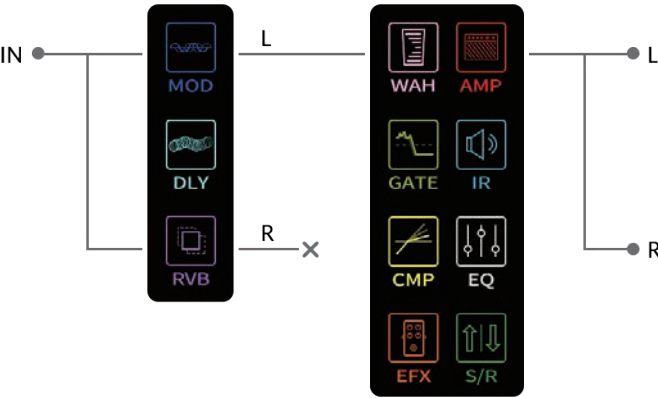
1024 Samples Impulse Response

NUX's iconic Solid Studio is famous for its 8 great sounding guitar cab IRs with 8 legendary mics and 3 mic placement options. We included all these beloved IRs into the MG-30, and added 4 Eminence guitar speaker IRs, 8 more bass cab IRs and 3 acoustic guitar IRs. MG-30 drives as high as 1024 samples IR resolution with ultra-low system latency. Moreover, you can load up to 152 3rd-party IRs (128 patches with User slots + 24 IR Collection slots) into the MG-30.



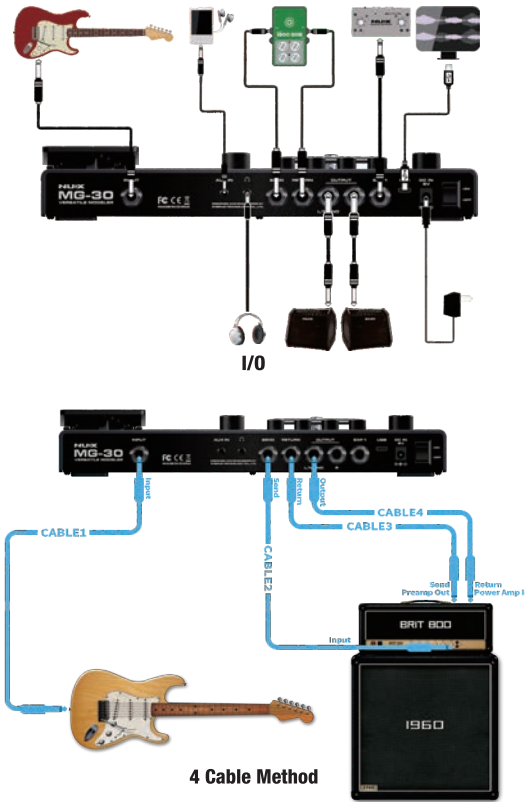
Effects & Block Routing

MG-30 offers tons of effects. The 11 signal blocks are independent and moveable, and with optional parallel post-efx routing.



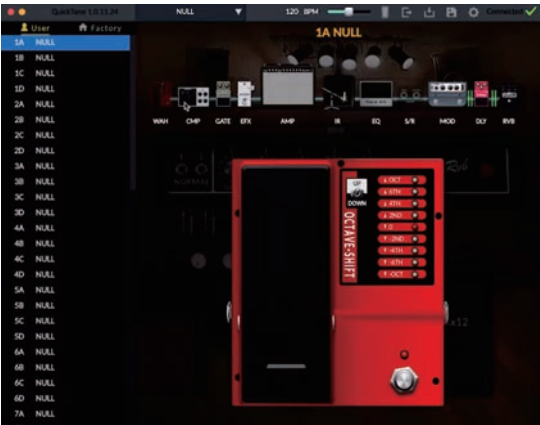
I/O & 4 Cable Method

The versatile I/O can let you run 4 cable method, or connect with other effects. You can place the SEND / RETURN Loop at any position along the signal path. The EXP1 can be used with expression pedal or with the included NUX NMP-2 to remote signal blocks as stomp application.



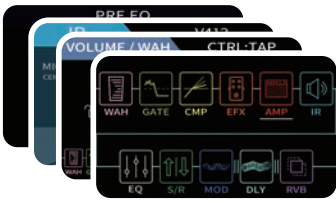
Quick Tone™

By connecting to NUX Quick Tone™, the interactive real-time editor software, you can easily tweak parameters, download patches, load 3rd party IRs, and set up USB audio stream routing.



4" Large Colorful LCD

The intuitive user interface features a large, colorful LCD, allowing you to easily navigate without needing to read manuals.



MG-400

Modeling Guitar & Bass Processor

The NUX MG-400 is a value packed modeler akin to his little brother, the MG-300. MG-400 is equipped with 2 powerful DSPs for the high-definition White-Box Amp Modeling Algorithm (TS/AC-HD) and Core-Image post effects. Since we announced the MG-300, users have been blown away by its sound, playability, and especially its easy tone tweaking and intuitive interface. Now, the MG-400 builds upon the MG-300 feature set moveable signal blocks, 12 IR COLLECTION slots, flexible P.L block with MIN & MAX parameter setup, an abundant SYSTEM MENU, and physical MASTER volume knob, the MG-400 is now the best value modeler for the money!

Made for Guitar Lovers

TS/AC^{HD}

Best Value Modeler

White-Box Amp Modeling algorithm (TS/AC-HD)

Easy tone tweaking and intuitive interface. White-box Amp Modeling & Pre-efx algorithm offers realistic playability and analog-chaos response.

Core-Image Post-effects

Modulation, Delay, Reverb, all the great ambience offers you good vibes.

Flexible Block Routing

You can move the signal blocks freely. NG, CMP, EFX, AMP, IR, EQ, MOD, DLY, RVB, P.L 10 independent moveable signal blocks.

3rd Party IR loader

512 samples IR resolution and USER slot with each patch. (additional 12 IR COLLECTION slots)

Parameter Follow

PARAMETER FOLLOW function can track your effect tweaking habits.

Multiple USB functions

USB recording interface, firmware update, QuickTone™ edit software.



IR



32bit DSP



10 Blocks



Full-Color LCD



MG-300 MKII

MODELING GUITAR PROCESSOR

The Realistic Modeler!

TS/AC-HD

WHITE-BOX Amp Modeling Algorithm

What is the most important component in an Amp Modeler?

In 2010 NUX introduced TS/AC (True Simulation of Analog Circuit) with the sole intention of bringing Amp Modeling to a whole new level. The DSP industry has been evolving at breakneck speed. We were impressed that a product like the Fractal® AXE-FX had the foresight to use a high-definition TS/AC (white-box) algorithm to do its Amp Modeling.

The concept of "Chaos makes the muse" perfectly applies to the analogue circuit. When you tweak the knob, it affects itself as well as other parameters. For a linear digital system, the parameter is independent, but the white-box algorithm offers real negative-feedback, increment-by-increment. NUX TS/AC-HD replicates the same playability most guitarists prefer in a real tube amplifier.

Building a sky-high priced product is easy. The art of building an affordable product is a real challenge. MG-300 MKII is exactly this kind of modeler that provides excellent sound while being affordable.

Modulation

NUX built the popular Mini Core Series and the Verdugo Series (post effects) using Core Image Technology. Now MG-300 MKII provides you with the same sound library - including all the classic Chorus, Flanger, Phase, Vibe, Rotary, Vibrato, and more.

Delay

If you have tried out the Cerberus or Atlantic, you know NUX's impressive Delay and Reverb sound. MG-300 MKII offers even more new models and algorithms with Core Image technology. It also provides sub-division and tap tempo to make your tone more musical.

Impulse Response

For Cabinet Simulation

NUX is well-known for Impulse Response technology. Using IR is the most popular way to do cab simulation today. Why ? Because the sound is noticeably more realistic compared to traditional cab simulation.

MG-300 MKII offers 512 sample resolution of impulse response. You can load 3rd party IR files using NUX QuickTone edit software. (MG-300 MKII supports 48kHz wav format) The built-in 30 cabinet IRs combine 4 classic microphones with 3 positions to allow beginners a quick and easy way to jump into the multi effects experience.

Reverb

Just like the iconic sound of NUX's Atlantic reverb algorithm, MG-300 MKII adds Room for small environment reflection. Simple operation with great sound is our mission. Try it... you'll love it!

Jam

(Drum & Looper)

MG-300 MKII supports NUX Phrase Loop Synchronization with Rhythm - a breakthrough technology derived from the popular NUX Loop Core Stompbox and later the JTC Pro Drum & Loop. Every guitarist has his/her own music style so a truly versatile drum & looper is indispensable.

MG-300 MKII has 8 rhythm styles, each style has 7 different beats. You can play the rhythm then record your phrase loop. MG-300 MKII will automatically amend the phrase to fit the current rhythm BPM.

*MG-300 MKII offers 60s phrase loop recording time.

Quick Tone™

By connecting to NUX Quick Tone™, you can easily tweak parameters, download patches, load 3rd party IRs, and set up USB audio stream routing.

New!

Tiny
Compact
Powerful.....

- TS/AC-HD Pre-Effects and Amp Modeling algorithm providing optimum sound response and playability
- CORE-IMAGE Post-Effects sound library offering you studio sound quality
- User-friendly interface and interactive Quick Tone™ Edit Software
- IR (Impulse Response), USB audio stream (recording interface with re-amp function), and more !



TS/AC^{HD}

MUSICIANS LOVE MG-300 MKII

MG-101

Modeling Guitar Processor

New!

Embark on your musical journey with the NUX MG-101, an entry-level amp modeler and guitar effects processor that simplifies the art of sound crafting. The MG-101 bridges the gap between complexity and innovation, providing an easy, intuitive pathway to explore an array of tones and effects. It's the perfect tool to ignite your passion for music, offering essential sounds and functionalities to kickstart your adventure.



New Generation Multi-effect | More Powerful !

TS/AC HD

Meet Your New Tone Companion!

Plug, Play, Rock!

The MG-101 offers a rich palette of sounds that traverse all musical styles, making it effortless to explore from the gritty and aggressive sounds of rock to the sleek tones of pop. With user-friendly operation and a durable build, it's equipped to accompany you from home practice to live performances, adapting to your evolving style and creativity. Embrace the MG-101 as more than just an effects processor; it's your portal to endless musical possibilities, designed to inspire growth and exploration for musicians of all levels.

TS/AC-HD

White-Box Algorithm: Premier Modeling Excellence

The NUX MG-101 Amp Modeler and Guitar Effects Processor features TSAC-HD (True Simulation of Analog Circuit – High-Definition) White Box Amp Modeling Technology, accurately capturing the dynamic response and harmonic intricacies of analog amplifiers across its amp models and effects. This processor's White-box Amp Modeling & Pre-Efx algorithm enhances realistic playability and analog-chaos response, embracing the concept that "Chaos makes the muse." It replicates the interdependent and feedback-responsive behavior of analog circuits, offering the nuanced, real-time control guitarists seek in tube amps. Alongside, Core-Image technology for post-effects ensures seamless, high-fidelity sound integration. The MG-101 delivers a comprehensive and dynamic playing experience, inviting players to explore a vast array of meticulously modeled tones and effects.

Impulse Response

The NUX MG-101 Amp Modeler and Guitar Effects Processor stands out with its advanced Impulse Responses (IRs) at a 512 samples resolution, ensuring detailed and authentic tone reproduction. It comes equipped with 25 meticulously designed onboard IRs, each perfectly matching the sonic characteristics of their amplifier counterparts, spanning from the warm overdrive of vintage tubes to the crisp attack of modern amps. Additionally, the inclusion of 12 user-loadable IR slots allows for extensive tonal customization, inviting guitarists to explore beyond the pre-loaded selections. This feature is seamlessly integrated with the MG-101's amp modeling and effects processing, offering a cohesive and immersive playing experience that captures the essence of playing through legendary amplifiers with unparalleled realism, whether on stage, in the studio, or during practice sessions.

Only The Essentials!

The MG-101 has 10 signal blocks which offers a comprehensive suite of essential effects at your disposal. From lush reverbs and delays to dynamic modulation effects, overdrives, distortions, and beyond, these effects can be easily tailored to fit your musical style. The MG-101 is engineered to deliver not just a plethora of sounds, but to provide the most essential, sought-after effects that musicians rely on for their core tone.

Guitar Livestreaming Rig

The NUX MG-101 transcends the boundaries of a mere effects processor; it's a gateway to your musical expression, catering to the demands of today's digital landscape. The MG-101 embraces the world of live streaming, effortlessly connecting to your phone via USB. All you need is an OTG adapter and you're all set!

Plus with a TRRS connection, you can plug in a headset with a microphone, making it easier for you to express yourself to audiences across the globe. This feature turns your space into a versatile live streaming studio, allowing you to capture your playing with crystal-clear quality, ensuring you that sharing your sound to the world will be a breeze.

JAM – Phrase Looper & Drum Machine

The NUX MG-101 enhances your musical exploration with an integrated Phrase Looper and a versatile drum machine featuring auto tempo detection. The Phrase Looper empowers you to layer guitar lines for creating rich, textured sounds on the fly, ideal for solo performances or songwriting. Paired with a drum machine that adjusts its rhythm to match your playing speed, this combination not only makes practice sessions more productive but also adds a dynamic edge to any performance, ensuring a seamless and cohesive musical experience.

Total Editing Control with QuickTone™ Editor Software

Experience unparalleled control over your tone with the QuickTone™ Editor Software for the NUX MG-101, compatible with both Mac and PC. This intuitive platform allows you to craft, customize, and save your own presets, offering a seamless blend of creativity and precision. Dive into detailed adjustments of amp models and effects, fine-tuning your sound to perfection. QuickTone™ transforms your MG-101 into a fully customizable sonic powerhouse, ensuring your unique sound is always within reach, whether in the studio or on stage.

NME-5

TRIDENT

Guitar Processor

TS/AC 4K

Tones of Nostalgia and Nuance.

A Top Shelf Modeler for Live Performance

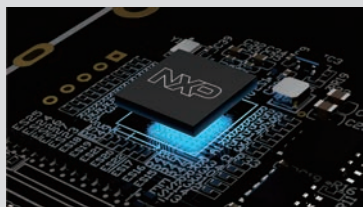
The perfect tool for live applications! The TRIDENT offers plenty of I/O options – the SEND / RETURN effect loop for external effects, 2 balanced XLR outputs to go direct to the PA system/front-of-house, PHONES output for monitoring, EXP. PEDAL for an external expression pedal, MASTER VOL pot for overall volume, and MIDI IN / OUT.

Built Like a Tank



The TRIDENT uses a one-piece die-cast aluminum chassis. It's solid, strong, and built for live performance.

World-class Amp Modeling



The TRIDENT features our newly updated iconic TS/AC-4K Amp Modeling (White-box Physical Modeling algorithm). The TS/AC-4K Amp Modeling algorithm is twice as complex than previous versions. This led us to design a new hardware platform with 2 DSPs, one to handle all the effects, and the other to handle the amp modeling algorithm. Additionally, the TRIDENT uses premium A/D & D/A converters and analog circuits to achieve a clear sound with low noise levels.

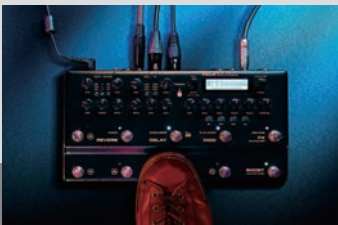
We Modeled Everything. Even the Patch Cables!



【And More】

This world-class amp modeling algorithm comes fully loaded with features and functionality. Just like their real counterparts, the included 27 amps feature HIGH / LOW inputs, 4 inputs for patch cable jumping, and a toggle switch for voicing, allowing for maximum tweaking.

Intuitive Control Layout



The knob layout, toggle switches, and foot switches of the TRIDENT are akin to stomp boxes, you can engage /disengage the effects freely. The SELECT & PARAM encoders with LCD display deliver more parameter details, block order / status.

An IR Loader for the Best Cabs



The TRIDENT is a powerful IR loader that includes 27 Cab IRs at 1024 sample resolution. Fine tune your Cab tone with 4 microphones (3 positions each), to adjust IR low cut / high cut / level. And finally, expand your IR library with 3rd party IRs and 32 additional slots. The Trident™ edit software will convert the IR format automatically on your PC or Mac.

A 60 Second Phrase Looper

The TRIDENT includes a 60 seconds phrase looper and you can adjust the looper position as PRE or POST. In PRE, the recorded loop is clean and ready to be processed by the TRIDENT Amps and Effects. In POST, the recorded loop is processed by the TRIDENT.

A Powerful Studio Device



The TRIDENT is also a powerful studio device! A perfect USB-C Audio Interface for guitar. You can download the Trident™ software from the product page to edit patches and set up the USB routing. Record your TRIDENT tracks to your favorite DAW or use it as a re-amp device to breathe new life into your previously recorded audio tracks.

Ample I/O



Powerful Processor

NAI-24

USB Audio Interface

Pure Class A discrete transistor preamplifier
FET type 76PRE compression circuit
Studio-grade audio transformer
Two headphones for customized monitoring

New!

| Audio Series |



Professional level
32-bit / 192 kHz
Mac / PC

2-in 4-out



2-in/4-out desktop USB audio interface with support for up to 32-bit/192kHz sample rate.

76PRE



FET type 76PRE compression circuit with multiple preset modes for various applications.

Studio-grade Audio Transformer



Studio-grade audio transformer on Main Output 1L/2R channels for warm, professional sound characteristics.

Phones



Two high-performance headphone amplifiers with routable channels for customized monitoring.

Special Designed Hi-Z Input



A specially designed Hi-Z input for guitar and bass preserves the amp feel and dynamics, delivering improved touch and feedback during recording and practice.

71dB Class-A Ultra-low-noise Mic Preamp

Equipped with two ultra-low-noise Class-A mic preamp circuits, including the 76PRE design with three transistors, delivering up to 71dB gain—comparable to standalone mic preamps.

Neutrik® I/O

All inputs and outputs are outfitted with premium studio-grade Neutrik® connectors.

Recording Mode & A/B Mode

Offers two output modes, allowing direct connection to rack units for hardware mixing or switch between A/B monitors for real-time studio monitoring.





Verdugo Series Stompboxes



■ Verdugo Series Stompboxes

Solid Studio MKII New! NSS-6 Preamp, Power Amp simulator & IR Loader TS/AC 4K



105(L) x 115(W) x 57(H) mm / 420g

SOLID STUDIO MKII, an end-to-end tone-shaping Amp Simulator, and independent L/R CYBER IR™ Engine, ushering in the following milestone evolution of the NUX.

Building upon the acclaimed Impulse Response lineage, SOLID STUDIO MKII adds independent Pre & Power Amp White-box Algorithm Modeling (TSAC-4K), stereo CYBER IR™ Engine, USB-C MIDI integration, and an intuitive PC editor (also the mobile APP), empowering players of all walks with apex-level tone in a go-anywhere footprint. This world-class amp modeling algorithm comes fully loaded with features and functionality. Like their natural counterparts, the amps have HIGH / LOW inputs, four inputs for patch cable jumping, a toggle switch for voicing, and max tweaking.

Amp Academy NGS-6 World-class Stompbox Amp Modeler TS/AC 2K



105(L) x 115(W) x 57(H) mm / 420g

Nowadays the Amp-less approach is quickly becoming a trend for modern musicians—like guitarists who appreciate a variety of amps and pedals, but don't have the luxury of a roadie crew to lug all of them around.

Amp Academy is a stompbox platform Amp Modeler with IRs and essential effects. It features 6 legendary amp models like Vintage (Fender Twin Reverb), Classic (Fender Vibro King), Modern (Mesa Boogie Mark I), Brown (Friedman HBE), Red (Mesa Boogie Dual Rectifier), and Iridium (Bogner Uberschall). NUX's iconic TSAC-2K (WHITE-BOX) Amp Modeling algorithm offers you realistic amp feeling and fast playability response. 1024 samples IR resolution with 3rd-party IR loader capability makes it easy to bring your favorite amp sounds everywhere.

Masamune NBK-5 Booster & Kompressor



105(L) x 115(W) x 57(H) mm / 420g

Boost and compression pedals are now available in one convenient metal housing, and it comes with selectable signal routing. The Boost Section comes with Boost Level, Drive, and Hi-Cut controls. The Compressor Section comes with Komp Level, Sustain, Blend, and Clip controls. The Masamune has an external foot-switch jack input, you can easily operate the pedal by using an additional remote switch.

Fireman NDS-5 Dual Channel Brown Sound Distortion



105(L) x 115(W) x 57(H) mm / 420g

FIREMAN is based on the legendary amplifier builder's famous distortion pedal. It's a very amp-like distortion pedal with Modern Brown Sound. We designed it with 2 independent VOLUME, GAIN control knobs to fit rhythm and solo applications. FIREMAN offers a True-bypass / Buffer-bypass toggle switch, and a 9V / 18V toggle switch. The 18V position doubles the working voltage inside to give you wider dynamic range.

Ace of Tone NDO-5 Dual Overdrive in a Stompbox



105(L) x 115(W) x 57(H) mm / 420g

ACE of TONE is a dual overdrive pedal stacked with Tubeman MKII and Morning Star. Why? Because great guitarists love 2 overdrives to stack their tone.

In the left corner~ Tubeman with FAT mode. Tubeman offers way more clarity and gain than any classic Tubescreamer, and we modified the circuit with a useful secondary function by simply holding the foot switch~ FAT mode. It cranks way more bass response to enhance the low-end yet makes the tone warmer!

In the right corner~ Morning Star with SHINE mode. Morning Star is based on legendary Bluesbreaker circuit: very transparent, low gain drive. Like our Morning Star, it also features a simple FOOT SWITCH HOLD to engage the iconic SHINE mode. In SHINE mode, you can get way more treble sound to make your tone crystal-clear.

Queen of Tone NDO-6 Dual Overdrive in a Stompbox



105(L) x 115(W) x 57(H) mm / 420g

Queen of Tone is a dual-stacked overdrive pedal, combining the Morning Star and Horseman circuits into a single unit with independent controls and footswitches. Each overdrive has its own character, with the Horseman based on the legendary Centaur and the Morning Star having a more transparent natural sounding overdrive. Both drive sections can be switched independently or combined with two options for Horseman stacked into Morning Star or Morning Star stacked into Horseman. A switch on the rear panel selects buffered or true bypass and another can enable INPUT FET STAGE (IFS) which increases the input signal to reach the amp's breakthrough edge driving your tube amplifier hotter. Holding either foot switch activates an extra feature. Silver mode on the Horseman extends the gain range. Shine mode on the Morning Star delivers increased treble. In summary, here are two classic overdrives which can be combined in different ways to help you discover your own signature grit and lead tones.

Optima Air NAI-5 Acoustic Simulator & IR Loader



105(L) x 115(W) x 57(H) mm / 420g

Optima Air is a dual-switch acoustic guitar simulator with a preamp for acoustic and electric guitar players. It simulates the acoustic guitar profiles with the best-optimized sound depending on your guitar and pickup type.

There are 15 built-in acoustic guitar profiles, and IR level control for you to adjust the simulated signal. It also offers a unique profile capture function to create your own acoustic guitar's sound profile.

Optima Air's preamp is driven by NUX's white box algorithm (physical modeling) of Neve 1073, and it has 3-band EQ and Gain controls to enhance your sound. There is an additional one-knob-control Reverb effect. You can also connect any effect pedal using the SEND/RETURN effect loop and add Optima Air into the signal chain.

Tape Echo NDD-7 Tribute to Space Echo



105(L) x 115(W) x 57(H) mm / 420g

The NUX TAPE ECHO is a tribute to the Japanese-made Space Echo from 1974. Analogue tape echo devices record incoming audio to a loop of magnetic tape, then replays the continuous loop over the playback head before being erased by new incoming audio. The NUX TAPE ECHO uses Core-Image technology to capture all the characteristics including Bass, Treble, Repeat Rate (Time), Intensity (Repeat), Echo Volume (Level), Reverb Volume (Reverb), and physical features like Wow, Flutter, Saturation. It even supports self-regeneration and self-oscillation using a dual footswitch stomp-box enclosure.

Solid Studio NSS-5 IR & Power Amp Simulator



105(L) x 115(W) x 57(H) mm / 420g

Solid Studio IR & Power Amp Simulator is a pedal version of the most classic amp/cabinet scenarios including microphones and power amp tubes. Specifically developed to fill the essential needs of discerning musicians and sound technicians, it faithfully reproduces the art of mic-ing instrument amplifiers on stage or in the studio.

Solid Studio comes with 8 cabinets, 8 microphones (3 positions for finetuning) and 3 power amp tube simulations, all of which are the most commonly used models in the world. You can also upgrade and add others using the Edit Software. Solid Studio provides ease-of-use, reliability, versatility, and, above all, incredible audio quality.

Duotime NDD-6 Dual Delay Engine



105(L) x 115(W) x 57(H) mm / 420g

Duotime is a real stereo delay pedal with independent time / sub-division & repeat knobs. In the 80s, professional musicians used rack-mount effects to achieve stereo delay. It was the golden era of legendary engineering, featuring devices like the Lexicon Delta, TC 2290, Eventide H3000, and more. When we talked to "working musicians", we found that they were looking for a great stereo delay with a compact size and ultra-simple controls. Therefore, we developed the duotime Dual Delay Engine. Duotime offers analog delay, tape echo, digital delay, modulation delay, and verb delay. It's ultra-musical, and easy to operate.

Stageman Floor NAP-5 Acoustic Preamp & DI



105(L) x 115(W) x 57(H) mm / 420g

Stageman Floor is derived from our popular acoustic amp, Stageman. It is a pure analog acoustic preamp with digital effects and looper function.

The preamp, featuring a highly sensitive 3-band EQ with MID scoop toggle switch, an adjustable notch filter, and input gain control, provides ginormous headroom and delivers the sound all natural. You can also optimize the input according to your guitar pickup type by selecting Piezo or Magnetic.

Stageman Floor is equipped with Chorus and Reverb effects, and it has a built-in FX Loop that allows you to insert external effect units using a TRS cable. It also serves as a looper with 60s recording capacity and unlimited overdubs.

Atlantic NDR-5 Delay & Reverb



105(L) x 115(W) x 57(H) mm / 420g

One of the best Delay & Reverb algorithms in a metal box! The Atlantic covers several historically representative delay and reverb types: 60's tape ech , 70's BBD Analog Delay, 80's Digital Delay, Spring Reverb, Plate Reverb and Hall Reverb. It also has a dreamy waterfall Shimmer effect – especially handy for intros, interludes and endings.

Atlantic also offers inside routing control between the effects, as well as a smart tap function that automatically detects whether you want to turn the delay on or off or tap in the tempo.

MLD Bass Preamp + DI NBP-5 Melvin Lee Davis Signature Bass Preamp + DI



105(L) x 115(W) x 57(H) mm / 420g

We collaborated with world-famous bassist Melvin Lee Davis, to create the MLD Signature Bass Preamp & DI. It has tons of functions based on Melvin Lee's musical experience and offers the best sound shaping controls such as 3-band EQ with middle-frequency selection, drive with blend control, speaker cabinet simulation (Impulse Response file loader) and built-in noise gate with attack and threshold controls.



NME-3 320(L) x 110(W) x 65(H) mm / 1.26 kg

Cerberus Integrated Effects & Controller

Cerberus is a multi-function effect pedal which can be used stand-alone or with the 4 cable method and comes packed with extraordinary features including inside routing, IR loader, analog overdrive & distortion and digital effects.

You can use Cerberus as a stand-alone device to prepare your setup and control as a stomp-box chain and/or save any combinations including routing as a preset and recall by a single click. You can add your essential gears into the chain using 4 cable method no matter which equipment you use. Cerberus also offers MIDI control to organize your own effect pedals and improve your effects control at the same time.



CORE

Upgraded Version of the Core Deluxe Series

DELUXE

MKII

■ Core Deluxe MKII Series



Amp Core Studio

New!

- 26 legendary amp models packed into a compact pedal.
- TS/AC-HD (White Box) amp modeling algorithm delivers authentic amp feel with ultra-responsive playability.
- 33 built-in IRs and 12 empty slots for custom Irs.
- 3 Scene Modes allow seamless switching between different amp tones in real-time.
- Built-in Noise Gate (NG), EQ, Patch Level (P.L.) adjustment, and Send/Return (S/R) function for versatile sound shaping.
- Send/Return loop to easily integrate your favorite effect pedals.
- Wide dynamic range of 108dB for superior sound quality.
- 48kHz / 32-bit high-precision processor for crystal-clear audio performance.
- Comes with AMP CORE STUDIO software for advanced sound editing and customization.
- Display: TFT LCD Display
- Power: 9V DC Negative Tip
- Dimensions: 122(L) x 72(W) x 47(H) mm
- Weight: 270g



Komp Core Deluxe MKII

New!

- 100% analog circuit.
- True bypass.
- Compressor designed for electric guitar and bass
- Low power consumption.
- Blend knob for mixing dry and compressed signals.
- Clip knob for input gain control
- Analog dry signal for low noise and zero latency.
- Power: 9V DC Negative Tip
- Dimensions: 122(L) x 72(W) x 47(H) mm
- Weight: 270g



Drive Core Deluxe

New!

- 100% analog circuits with digital switching rotary knob.
- True bypass.
- 8 iconic drive circuit in one pedal.
- Holding FS to engage/disengage the Post Boost.
- Analog dry signal for low noise and zero latency.
- Power: 9V DC Negative Tip
- Dimension: 122(L) x 72(W) x 47(H)mm
- Weight: 270g



Metal Core Deluxe MKII

- 3 high gain Amp Models in the compact enclosure.
- Duo Rect: Based on Mesa Boogie Dual Rectifier.
- Fireman: Based on Friedman BE-100.
- VH 4: Based on Diezel VH4.
- IR out for amp-less application. (512 samples resolution)
- True-bypass.
- Parameters auto saving into 3 models.
- Low power consumption. (less than 110mA)
- TSAC-HD modeling offers realistic playability and response.
- Power: 9V DC Negative Tip
- Dimension: 122(L) x 72(W) x 47(H)mm
- Weight: 270g



Time Core Deluxe MKII

- 7 delay types in the compact enclosure.
- Φ Phi Digital Delay: Musical digital delay with golden ratio 2nd repeat head.
- Analog Delay: Warm sound with natural treble decay.
- Modulation Delay: Lush and rich chorus with digital delay.
- Tape Echo: High-frequency saturation and low-end decay.
- Pan Delay: Creative natural stereo feeling.
- Verb Delay: Plate Reverb algorithm with Digital Delay to create the ambient atmosphere.
- Reverse Delay: Inspire guitarists for new ideas.
- S.O.S: 40 seconds stereo phrase loop.
- Sub-division with Smart Tap Tempo. (Maximum: 1580ms)
- True-bypass or Buffer-bypass(Tails).
- Supports Stereo.
- Kill Dry.
- Power: 9V DC Negative Tip
- Dimension: 122(L) x 72(W) x 47(H)mm
- Weight: 270g



Mod Core Deluxe MKII

- 8 modulation types in the compact enclosure.
- ST.CH (Stereo Chorus), CE-1, SCF CHO, SCF FLG, SCF P.M., U-VIBE CHO, U-VIBE VIB and PH-100 .
- ST.CH is based on MXR® Stereo Chorus.
- CE-1 is based on BOSS® CE-1.
- SCF is based on TC Electronic® SCF Stereo Chorus Flanger.
- U-VIBE is based on Dunlop® UV-1 Uni-Vibe Chorus / Vibrato.
- PH-100 is based on MXR® Phase 100.
- Normal routing(mono out or stereo out) and advanced routing(PRE, // , POST).
- Parallel routing offers Blend parameter.(Alt tweaking, Tweak becomes Blend parameter.)
- Smart Tap Tempo. (50~200 BPM)
- Power: 9V DC Negative Tip
- Dimension: 122(L) x 72(W) x 47(H)mm
- Weight: 270g

Core Deluxe MKII Series ■



Loop Core Stereo

- All new design with a high-definition color LCD display
- Up to 6 hours recording time(Stereo)
- 99 User memories
- Built-in rhythm tracks with 50 patterns
- Split out for two amplifiers
- Cab simulation for output to mixer
- Built-in MIDI control
- Sampling Rate: 44.1kHz
- A/D Converter: 24bit
- Signal Processing: 32bit floating
- Frequency Response: 20Hz - 20kHz
- Noise Level: -100dBu
- Dynamic Range: 108dB
- Power Consumption: 110mA - 120mA
- Input: Mono / Stereo
- Outputs: Mono / Stereo / Phones
- Display: TFT LCD Display
- Power: 9V DC Negative Tip
- Dimensions: 122(L) x 72(W) x 48(H) mm
- Weight: 264g



Verb Core Deluxe

- 8 reverb types in the compact enclosure.
- Room, Hall, Plate, Damp, Shim, Spring, Tre-Verb, Mod-Verb.
- Holding Freeze.
- True-bypass or Buffer-bypass(Tails).
- Supports Stereo.
- Kill Dry.
- Analog dry signal for low noise and zero latency.
- Power: 9V DC Negative Tip
- Dimension: 122(L) x 72(W) x 47(H)mm
- Weight: 270g



Loop Core Deluxe

- Record and overdub as you need.
- Up to 8 hours recording time.
- 99 user memories.
- Built-in rhythm tracks with 40 patterns, TAP Tempo function.
- Optimized drum machine frequency compensation function for 1 x 12 guitar amplifier.
- Cab simulation function.
- Buffer function to compensated signal attenuation.
- Change the playback tempo of your recorded phrase without changing the key.
- Switching phrases without latency.
- Extensional pedal(optional) for more control.
- Import and backup phrases with PC.
- True-Bypass.
- 24bit Loop pedal with drum machine.
- Powered by battery or adapter.
- Dimension: 122(L) x 72(W) x 47(H)mm
- Weight: 270g

Reissue Series

Stompboxes
Analog Pedals



1960s

1980s

1990s

A Salute to **Classic Tone**



59' Bassguy

Bassman

- Legendary Fender Bassman amplifier.
- Classic knobs and panel design.
- Jump toggle for normal and bright unite.
- 100% Analog circuit.
- True bypass.
- Dimension: 122(L) x 72(W) x 47(H)mm
- Weight: 230g

New!



63' DIAMOND

Overdrive

- Golden age Vox AC-30 preamp.
- Classic knobs and panel design.
- Top boost toggle.
- True-bypass hardware switching.
- Dimension: 122(L) x 72(W) x 47(H)mm
- Weight: 230g

New!



'6ixtyFive OD

Black Panel Fender Tone from the 60's

- Classic black panel overdrive tone.
- Analog circuit with JRC4558 gain stage.
- OP AMP simulates the characteristic overdrive of the black panel tube amplifiers.
- Saturation trimmer.
- Pure analog circuit with true-bypass.
- Dimension: 122(L) x 72(W) x 47(H)mm
- Weight: 230g



Steel Singer Drive

DIAB

- Dumble in A Box pedal.
- Bring the Texas Flood spirit back.
- Pure analog circuit with true-bypass.
- Dimension: 122(L) x 72(W) x 47(H)mm
- Weight: 230g



Plexi Crunch

MIAB

- MIAB pedal.
- 3 FET gain stage replicates Plexi, 800 to 900.
- Pure analog circuit with true-bypass.
- Dimension: 122(L) x 72(W) x 47(H)mm
- Weight: 230g



REC TO Distortion

RIAB

- Most iconic 90's high gain amp sound in a box.
- Tight low end response.
- Pure analog circuit with true-bypass.
- Dimension: 122(L) x 72(W) x 47(H)mm
- Weight: 230g



Analog Chorus

Legendary Chorus Sound from the 80's

- Based on the 80's legendary bucket brigade chorus ensemble pedal.
- Width and Speed knobs provide fine sound adjustment.
- All-analog circuitry with 3207 BBD chip.
- Blend knob offers clarity of guitar sound.
- Dimension: 122(L) x 72(W) x 47(H)mm
- Weight: 230g



Analog Delay

Warm Analog Delay Sound from the 80's

- Based on the 80's legendary bucket brigade delay pedal.
- Warm and lush sound.
- 20-300ms delay range.
- All-analog circuitry with 3205 BBD chip.
- Dimension: 122(L) x 72(W) x 47(H)mm
- Weight: 230g



XTC OD

BIAB

- The famous boutique amp red channel sound.
- Full gain, full harmonics.
- Quick response that mimics the feel of a real amp.
- Pure analog circuit with true-bypass.
- Dimension: 122(L) x 72(W) x 47(H)mm
- Weight: 230g

Mini Core Series

Mini Pedals

Mini but **Mighty**



NSS-4 Pulse

NCH-5 Mini SCF

NCH-3 Voodoo Vibe

NDD-3 Edge Delay

NRV-3 Damp Reverb

NCH-4 Ukiyo-E Chorus

NDL-3 Hook Drum&Loop

■Mini Core Series Stompboxes



NCH-3
Voodoo Vibe

- 2 models in the mini enclosure.
- Chorus mode, Intensity will change the depth of the sweeping effect.
- Vibrato mode, Intensity will change the degree of pitch modulation.
- Smart Tap Tempo.
- True Bypass or Buffered Bypass (Trails).
- Supports Stereo.
- Low power consumption. (less than 100mA)
- Analog dry signal for low noise and zero latency.
- Dimensions: 94mm(L) x 51mm(W) x 53mm(H)
- Weight: 175g



NDD-3
Edge Delay

- 3 delay types in the mini enclosure.
- Phi Digital Delay: Musical digital delay with golden ratio 2nd repeat head.
- Analog Delay: Warm sound with natural treble decay.
- Tape Echo: High-frequency saturation and low-end decay.
- Sub-division with Smart Tap Tempo.
- True-bypass or Buffered Bypass(Trails).
- Supports Stereo.
- Low power consumption. (less than 100mA)
- Analog dry signal for low noise and zero latency.
- Dimensions: 94mm(L) x 51mm(W) x 53mm(H)
- Weight: 175g



NCH-5
Mini SCF

- Tribute to the legendary modulation pedal-SCF.
- Chorus, P.M., FLG.
- Mini enclosure.
- Wide dynamic range: 103dB
- Smart Tap Tempo.
- True-bypass or Buffered Bypass.
- Supports Stereo.
- 9V/100mA.
- Analog dry signal for low noise and zero latency.
- Dimensions: 94mm(L) x 51mm(W) x 53mm(H)
- Weight: 175g



NRV-3
Damp Reverb

- 3 reverb types in the mini enclosure.
- Plate: Clear ambience. Renowned studio reverb found on classic recordings.
- Spring: Bottom-heavy dimension flashback. Classic "surf" reverb, great for Rockabilly!
- Hall: Lush&large encompassing reverb with warm decay.
- Holding footswitch for secondary function. (Shimmer, Freeze)
- True-bypass or Buffered Bypass(Trails).
- Supports Stereo.
- Low power consumption. (less than 100mA)
- Analog dry signal for low noise and zero latency.
- Dimensions: 94mm(L) x 51mm(W) x 53mm(H)
- Weight: 175g



NCH-4
Ukiyo-E Chorus

- 3 chorus models in the mini enclosure.
- ST Chorus: Gorgeous sounding chorus.
- SCH-1: Clean chorus to a pretty realistic Leslie effect.
- CE-1: Special warmth of a rich jazz atmosphere.
- Sub-division with Smart Tap Tempo.
- True-bypass or Buffered Bypass(Trails).
- Supports Stereo.
- Low power consumption. (less than 100mA)
- Analog dry signal for low noise and zero latency.
- Dimensions: 94mm(L) x 51mm(W) x 53mm(H)
- Weight: 175g



NSS-4
Pulse

- 3 default IR types in the mini enclosure. (Total=24slots)
- EG CAB: JZ120, DR112, BS410, A212, TR212, 1960, GB412, V412.
- BS CAB: AGL DB810, AMP SV810, MKB 410, TRC 410, AMP SV410, Bassguy 410, Eden 410, AMP SV212.
- AG IR: G HBird EG Mag, G J15 EG Mag, M D45 EG Mag, G HBird Pie, G J15 Pie, M D45 Pie, M HD28 Pie, T 814 Pie.
- 1024 samples real time calculation.
- True Bypass or Buffered Bypass.
- Supports Stereo.
- Low power consumption. (less than 100mA)
- USB Audio Stream, Firmware Update.
- Pulse Editor for 3rd party IR loading, IR tweaking.
- WAV format supports automatically. (through Pulse Editor)
- Dimensions: 94mm(L) x 51mm(W) x 53mm(H)
- Weight: 175g



NDL-3
Hook

- 24-bit phrase loop with auto tempo detection rhythm in a mini enclosure.
- 11 rhythm styles with Smart Tap Tempo.
- Up to 6 minutes recording, unlimited overdubs.
- Drum and Loop volumes can be adjusted separately.
- Independent loop & drum playing.
- True-bypass and analog dry-through.
- 1/8' phones out for silent practice.
- Low power consumption. (less than 100mA)
- USB-C port for firmware update, file import/export.
- Dimensions: 94mm(L) x 51mm(W) x 53mm(H)
- Weight: 175g



NTU-3 MKII
Flow Tune

- Tuning range: A0 (27.5Hz) - C8 (4186Hz)
- Tuning mode: Chromatic, Guitar standard, Guitar compensation, Bass
- Tuning accuracy: ±0.1 cent
- Bypass modes: True Bypass / Buffered Bypass / Buffered Bypass Monitor
- A4 calibration (430Hz - 450Hz)
- High-definition LCD display
- 3 display modes including a Strobe mode and 2 Arrow modes
- Dimensions: 97.4mm(L) x 43.5mm(W) x 41.6mm(H)
- Weight: 197.4g



NTU-3 MKII
Flow Tune

- Tuning range: A0 (27.5Hz) - C8 (4186Hz)
- Tuning mode: Chromatic, Guitar standard, Guitar compensation, Bass
- Tuning accuracy: ±0.1 cent
- Bypass modes: True Bypass / Buffered Bypass / Buffered Bypass Monitor
- A4 calibration (430Hz - 450Hz)
- High-definition LCD display
- 3 display modes including a Strobe mode and 2 Arrow modes
- Dimensions: 97.4mm(L) x 43.5mm(W) x 41.6mm(H)
- Weight: 197.4g



NFB-2
Lacerate

- True Bypass / Buffered Tail (Cause of inside power doubling, our buffer could offer double dynamic range than others!).
- 2 Boost functions (Clean Boost - Crank).
- Dual FET for the most tube like tone in a transistor design.
- LED indicator shows status of effect.
- Dimensions: 94mm(L) x 51mm(W) x 53mm(H)
- Weight: 175g



NOD-2
Tube Man MKII

- Delivers that warm, natural tube overdrive sound
- By rotating the knobs you can boost the guitar amp for colorful tone or overdrive itself for unique pedal sound.
- True bypass.
- LED indicator shows status of effect.
- Dimensions: 94mm(L) x 51mm(W) x 53mm(H)
- Weight: 175g



NOD-3
Morning Star

- Warm overdrive circuit with switchable "Shine" circuit (Hold the foot-switch for 1.5 seconds to activate)
- True Bypass / Buffered Bypass (Optional)
- Drive, Level and Tone
- Dimensions: 94mm(L) x 51mm(W) x 53mm(H)
- Weight: 175g



NOD-1
Horseman

- The NUX Horseman pays tribute to the legendary gold overdrive pedal in the 90's. What's gone is gone? NUX engineers made painstaking effort to bring back that transparent sound. What's more, the horseman has a secondary foot switch function to switch the golden sound to silver version.
- Dimensions: 94mm(L) x 51mm(W) x 53mm(H)
- Weight: 175g



NDS-2
Brownie

- Classic distortion tone.
- 2-stage distortion design provides higher distortion True Bypass.
- LED indicator shows status of effect.
- Dimensions: 94mm(L) x 51mm(W) x 53mm(H)
- Weight: 175g



NCP-2
Sculpture

- 3 control knobs: Sustain / Level / Blend
- 2 compression modes
- 2 Bypass modes
- Dimensions: 94mm(L) x 51mm(W) x 53mm(H)
- Weight: 175g

Wireless System

Ditch the Cables, Keep the Tone



High Definition Color-LCD Display



B-7 PRO features a high definition color-LCD display. You can check the information very easily while performing on stage .

Long Battery Lifetime



The B-7 PRO features large Li-ion batteries inside the TX & RX. The battery lifetime is as long as 6 hours.

Easily Recharging



You can easily put the RX on the top of the TX to recharge it. Super convenient for you to fully recharge it.



High Quality Stereo Audio Monitor



B-7 PRO personal wireless in-ear monitor system delivers stereo audio signal on 2.4 GHz frequency range. That's a global interference-free broadcasting range you can use everywhere without a signal break. With the 24-bit 48 kHz audio quality you will never experience unwanted sound degradation.

Automatic Setup and Easy Matching



The user-friendly matching system makes it easier to use, just turn on the TX & RX and they will be paired with each other within a couple of seconds. Each wireless set has a unique pairing algorithm, it automatically detects each other and configures their own IDs.

Stable Mode for Anti-interference



To achieve the best performance, you can adjust the transmitting parameter between LOW LATENCY and STABLE. To avoid interference, please check if there is any Wi-Fi device around the TX&RX. It will be better for TX&RX to stay 0.8~1.0 meter away from any other 2.4GHz device to achieve the best performance.

USB Audio Recording



Connect the B-7 PRO's TX (transmitter) to your cellphone or computer, you can use the B-7 PRO as a USB interface for recording. No matter what you play with a band on stage, you can record all sounds you hear from the monitor. Enjoy!

24-bit / 48 kHz
for Saxophone



B-6 PRO

Wireless System

- Operating Frequency Band: 2400-2483.5MHz
- RF output power: maximum 10 mW E.I.R.P
- Audio Quality: 24bit/48kHz
- Frequency Response: 20Hz-20kHz
- Latency: 3.1ms(Low), 5.6ms(default), 9.3ms (stable)
- Maximum output of audio signal: 6.4 dBV (SEND/OUTPUT)
- THD+N: 0.01% 1kHz, typical
- Dynamic Range: 114dB, A-weighted(OUTPUT/SEND)
- Auto-sleep Mode: N/A
- Built-in Battery Capacity: 3.7V/500mAh(Transmitter)/3.7V/3000mAh(Receiver)
- TX Battery: Up to 6.5 hours lifetime
- RX Battery: Up to 6.5 hours lifetime
- Power Requirements: DC 9V, 1A min, negative tip power supplies(Receiver)
- Operation Range: Up to 50 m (165 ft) typical
- TX Dimensions: 61mm(L) x 60mm(W) x 30mm(H)
- TX Weight: 60g
- RX Dimensions: 93mm(L) x 120mm(W) x 60mm(H)
- RX Weight: 420g

New!

24-bit / 48 kHz
High-quality Stereo Audio



B-7 PRO

Wireless In-Ear Monitor System

- Operating Frequency Band: 2400-2483.5MHz
- Transmit Mode: Frequency Hopping
- RF Output Power: 10 mW E.I.R.P. max
- Audio Quality: 24bit/48kHz
- Frequency Response: 20Hz-20kHz
- Latency: 7.33ms(low latency setting)-10.85ms(default)-14.33ms(safe setting)
- Unbalanced Input Impedance: 10kΩ
- Balanced Input Impedance: 20kΩ
- AUX Input Level: 2.1 Vrms (8.7 dBu) max
- Balanced Input Level: 9.8 Vrms (22 dBu) max
- Headphone output impedance: Minimum 13Ω
- Headphone Maximum output power per channel: 57mW (THD<0.1% RLOAD=16Ω, 1kHz)
- Channel separation: -105dB
- THD+N: <0.01% 1kHz, typical
- Dynamic Range: 110dB, A-weighted
- Output level Adjustment Range: Mute -86dB~+12dB
- Auto-Off: It automatically turns off after 10 minutes of no connection or if the connection is lost
- Built-in Battery Capacity: Rechargeable Li-polymer (Transmitter 3.7V/3000mAh, receiver 3.7V/400mAh)
- TX Battery: Up to 6 hours lifetime
- RX Battery: Up to 6 hours lifetime
- Power Requirements: DC 9V, 1A min, negative tip power supplies
- Operation Range: Up to 50 m (165 feet) maximum
- TX Dimensions: 140mm(L) x 97mm(W) x 53mm(H)
- TX Weight: 525g
- RX Dimensions: 47mm(L) x 71mm(W) x 22mm(H)
- RX Weight: 51g

New!

Redefined!
Professional Guitar Wireless



B-8

Wireless System

- Operating Frequency Band: 2400-2483.5MHz
- Audio Quality: 24bit/48kHz
- Frequency Response: 20Hz-20kHz
- Latency: 2.5ms(best performance setting) - 8.7ms(safety mode)
- Input Impedance: 1MΩ
- Maximum Input Level: 1kHz at 1% THD +6.2dBV (5.78 Vp-p)
- THD+N: 0.01% 1kHz, typical
- Dynamic Range: 122dB, A-weighted(OUTPUT/SEND)
- Output level Adjustment Range: Mute -64dB-0dB
- Auto-sleep Mode: N/A
- Built-in Battery Capacity: 3.7V/500mAh Rechargeable Li-polymer (Transmitter)
- TX Battery: Up to 6 hours lifetime
- Power Requirements: 7V to 12V DC, 500mA min, negative tip power supplies(Receiver)
- Operation Range:
 - Indoors: Up to 30 m (100 ft) typical
 - Up to 60 m (200 ft) maximum
- Outdoors: Up to 20 m (65 ft) typical
- Up to 50 m (165 ft) maximum
- TX Dimensions: 72.5mm(L) x 49.3mm(W) x 23mm(H)
- TX Weight: 63g
- RX Dimensions: 122mm(L) x 95mm(W) x 60mm(H)
- RX Weight: 500g

New!

B-7 PSM

5.8GHz Wireless In-Ear Monitoring System

- 5.8GHz operating frequency
- Auto Frequency-Hopping
- Stereo Signal
- 4 hrs Working Time
- Latency: < 5.5 ms
- S/N: 92 dB (A-weighted)
- TX / RX Battery Capacity: 450mAh 3.7V
- Power Case Battery Capacity: 3000mAh/3.7V
- Dimensions
 - Power Case: 114mm(L) x 70mm(W) x 32mm(H)
 - TX: 60mm(L) x 36mm(W) x 25mm(H)
 - RX: 60mm(L) x 36mm(W) x 25mm(H)
- Weight
 - Power Case: 130g
 - Transmitter/Receiver: 32g each



B-6

2.4GHz Wireless System for Saxophone

- Frequency Band: 2.4GHz ISM
- Sampling Rate: 24bit/44.1kHz
- Latency: < 4ms
- S/N: 110dB (-A-weighted)
- THD + Noise: <0.2% @1kHz
- TX/RX Battery Run Time: > 4hrs
- Battery Capacity
 - TX/RX Battery Capacity: 500mAh / 3.7V
 - Power Case Battery Capacity: 3000mAh / 3.7V
- Dimensions
 - Power Case: 153mm(L) x 113mm(W) x 55mm(H)
 - TX: 60mm(L) x 53mm(W) x 31mm(H)
 - RX: 80mm(L) x 25mm(W) x 25mm(H)
- Weight: 389g

B-5RC

2.4GHz Wireless System

- 2.4GHz operating frequency
- 24bit 44.1kHz
- Latency: <5ms
- Frequency response: 20Hz – 20kHz
- THD+ Noise < 0.05% @1kHz
- TX/RX Battery Capacity: 500mAh / 3.7V
- TX/RX Battery run time: 4hrs
- Power Case Battery Capacity: 3000mAh / 3.7V
- Dimensions
 - Power Case: 132mm(L)x93mm(W)x50mm(H)
 - Transmitter/Receiver: 108mm(L)x30mm(W)x21mm(H)
- Weight
 - Power Case: 196g
 - Transmitter/Receiver: 34g each



C-5RC

5.8GHz Wireless Guitar System

- 5.8GHz operating frequency
- 24bit 44.1kHz
- Latency: <5.5ms
- S/N: 110dB
- Frequency Response: 20Hz – 20kHz
- THD+ Noise < 0.2% @1kHz
- Signal Gain: 0dB
- TX/RX Battery Capacity: 500mAh / 3.7V
- TX/RX Battery run time: >4hrs
- Power Case Battery Capacity: 3000mAh / 3.7V
- Dimensions
 - Power Case: 132mm(L)x93mm(W)x50mm(H)
 - Transmitter/Receiver: 108mm(L)x30mm(W)x21mm(H)
- Weight
 - Power Case: 196g
 - Transmitter/Receiver: 34g each

B-3RC

2.4GHz Wireless Microphone System

- 2.4GHz operating frequency
- 24 bit 44.1kHz
- Latency: <3.5ms
- Transmission Range: Up to 100 feet line - of - sight
- Dynamic Range: 110dB
- THD + Noise < 0.2% @ 1kHz
- Built-in Battery Capacity (TX & RX): 330mAh/3.7V
- TX/RX Battery Running Time: >3 hours
- TX/RX Battery Charging Time: around 2.5 hours
- Storage Box Battery Capacity: 3000mAh/3.7V
- Storage Box Battery Charging Time: around 4 hours
- Dimensions
 - Power Case: 114mm(L) x 70mm(W) x 32mm(H)
 - Transmitter: 80mm(L) x 24mm(W) x 24mm(H)
 - Receiver: 80mm(L) x 24mm(W) x 24mm(H)
- Weight
 - Power Case: 130g
 - Transmitter/Receiver: 36g



New!



B-1 Lite

2.4GHz Wireless System

- 2.4GHz operating frequency
- 24bit 44.1kHz
- Latency: <5ms
- Operation Range: Up to 20 meters / 65 feet line-of-sight (environment-dependent)
- Frequency response: 20Hz – 20kHz
- THD+ Noise < 0.05% 1kHz @ -10dbFS
- TX/RX Battery Capacity: 500mAh / 3.7V
- TX/RX Battery run time: 5hrs
- Dimensions: 73mm(L) x 40mm(W) x 55mm(H)
- Weight: 57g each

B-2 PLUS

2.4GHz Wireless System

- 2.4GHz operating frequency
- 32bit 44.1kHz
- Latency: <5ms
- Operation Range: Up to 18 meters / 60 feet line-of-sight (environment-dependent)
- Frequency response: 20Hz – 20kHz
- THD+ Noise < 0.05% @1kHz
- TX/RX Battery Capacity: 750mAh / 3.7V
- TX/RX Battery run time: 7hrs
- Dimensions: 73mm(L) x 40mm(W) x 55mm(H)
- Weight: 57g each



B-10 Vlog

2.4GHz Wireless Vlog System

- 2.4GHz operating frequency
- 24bit 44.1kHz
- Latency: <5ms
- Frequency response: 50Hz – 20kHz
- THD+ Noise < 0.02% @1kHz
- TX/RX Battery Capacity: 400mAh / 3.7V
- Battery running time: 4 hours for TX, 6 hours for RX
- Maximum Input Level (3.5mm TRS): 100mVrms(-20dBV)
- Microphone on TX: Omnidirectional Electret Condenser Mic
- Maximum Sound Pressure Level: 110dB SPL
- Dimensions
 - TX/RX: 51mm(L)x42mm(W)x13mm(H)
- Weight
 - TX/RX: 28g each

Mighty Series

Desktop Modeling Amplifier

Wireless Modeling Amplifier

Guitar Amplifier

Amp modeling Amplug



TS/AC-HD

Vast Assortment Of EFX

7 Channels with PRO SCENES

Bluetooth

Total Editing Control

Versatile Routing and Output Options



Mighty 8BT MKII
Portable Guitar Amplifier

- 8 watts with 6.5" FRFR speaker portable Modeling Amplifier.
- MIC input.
- TS/AC-HD (White-Box) Amp Modeling algorithm offers realistic playability & feedback.
- 512 samples IR resolution
- 7 presets with ACTIVE functions.
- GATE, EFX, AMP, IR, MOD, DLY, RVB effect blocks.
- White-box algorithm EFX offers analog response and natural chaos.
- Patch Level function for each preset.
- Drum machine.
- Intuitive MightyAmp™ APP & Mighty Editor™ edit software (3rd party IR loader).
- 8 x AA batteries can drive 8 hrs.
- Dimension: 240mm(L) x 166mm(W) x 220mm(H)
- Weight: 2.6kg



Mighty 20 MKII
Guitar Amplifier

- 20 watts Modeling Amplifier.
- TSAC-HD (White-Box) Amp Modeling algorithm offers realistic playability & feedback.
- Pedal-friendly amp that works well with your favorite external pedals.
- 7 presets with ACTIVE and Pro SCENE functions.
- GATE, COMP, EFX, AMP, EQ, MOD, DLY, RVB effect blocks with free order.
- White-box algorithm EFX offers analog response and natural chaos.
- Patch Level function for each preset.
- 60s phrase loop with auto tempo detection drum machine.
- Intuitive MightyAmp™ App & Mighty Editor™ edit software.
- USB-B: Mighty Editor™ edit software communication, USB audio stream, and Firmware update.
- Dimensions: 380mm(L) x 186mm(W) x 325mm(H)
- Weight: 6.6kg



Mighty 40 MKII
Guitar Amplifier

- 40 watts Modeling Amplifier.
- Adjustable wattage – 0.5w / 5w / 40w.
- TS/AC-HD (White-Box) Amp Modeling algorithm offers realistic playability & feedback.
- Pedal-friendly amp that works well with your favorite external pedals.
- 7 presets with ACTIVE and Pro SCENE functions.
- GATE, COMP, EFX, AMP, EQ, MOD, DLY, RVB effect blocks with free, fully routable order.
- White-box algorithm EFX offers analog response and natural chaos.
- Patch Level function for each preset.
- 60s phrase loop with auto tempo detection drum machine.
- Dimensions: 450mm(L) x 236mm(W) x 436mm(H)
- Weight: 9.5kg



Mighty Space
Portable Wireless Modeling Amplifier

- Powerful 30 watts desktop wireless Modeling Amplifier.
- TS/AC-HD (White-Box) Amp Modeling algorithm offers realistic playability & feedback.
- 512 samples IR resolution. (34 premium built-in IRs and 20 user slots for 3rd party)
- 7 presets with ACTIVE functions. (PRESET switch toggles ACTIVE ones sequentially.)
- GATE, CMP, EFX, AMP, IR, EQ, MOD, DLY, RVB effect blocks with free order.
- White-box algorithm EFX offers analog response and natural chaos.
- Drum & Loop with additional NMP-2 footswitch control. 7hrs playing time. (11.1V / 5000mAh)
- Dimension: 363mm(L) x 171mm(W) x 171mm(H)
- Weight: 4.06kg



Mighty Lite BT MKII
Mini Modeling Amp

- 3 watt desktop Modeling Amplifier.
- TSAC-HD (White-Box) Amp Modeling algorithm offers realistic playability & feedback.
- 512 samples IR resolution. (36 premium built-in IRs and 18 user slots for 3rd party)
- 7 presets with ACTIVE functions. (PRESET switch toggles ACTIVE ones sequentially.)
- GATE, EFX, AMP, IR, MOD, DLY, RVB effect blocks.
- Patch Level function for each preset.
- Drum machine.
- Intuitive MightyAmp™ APP & Mighty Editor™ edit software(3rd party IR loader).
- Dimension: 166mm(L) x 98mm(W) x 124(H)mm
- Weight: 720g



Mighty Air
Wireless Stereo Modeling Amplifier

- Latest wireless guitar technology with ultra-low latency
- Guitar and bass amp models, IR cabinet models, noise gate, onboard effects, acoustic guitar simulator, drum machine
- Custom stereo loudspeaker system that delivers incredible tones
- NUX MightyAmp mobile APP for advanced features
- Stereo audio streaming via Bluetooth
- Runs on built-in rechargeable battery (up to 18 hours on a single charge)
- Dimension: 185mm(L) x 92mm(W) x 96(H)mm
- Weight: 810g



Mighty 60 MKII
Guitar Amplifier

- 60 watts Modeling Amplifier.
- Adjustable wattage – 0.5w / 5w / 60w
- TS/AC-HD (White-Box) Amp Modeling algorithm offers realistic playability & feedback.
- Pedal-friendly amp that works well with your favorite external pedals.
- 7 presets with ACTIVE and Pro SCENE functions.
- GATE, COMP, EFX, AMP, EQ, MOD, DLY, RVB effect blocks with free, fully routable order.
- White-box algorithm EFX offers analog response and natural chaos.
- Patch Level function for each preset.
- 60s phrase loop with auto tempo detection drum machine.
- Dimension: 504mm(L) x 263mm(W) x 490mm(H)
- Weight: 12.1kg



Mighty 40BT
Guitar Amplifier

- 40 Watt Output
- 1 x 10-inch speaker
- 4 Channels (Clean, Overdrive, Metal, Lead) Each channel has 2 presets
- Gain and Level controls, 3-band EQ (Bass - Mid - High) and Master Volume
- 9 types of effects (Chorus, Phaser, Tremolo, Delay and Reverb)
- 3 types of Reverb and 3 types of Delay
- 3 Effects can be activated at same time (Mod - Delay - Reverb)
- TUNER
- Dimensions: 450mm(L) x 232mm(W) x 398mm(H)
- Weight: 9.6kg



Mighty Bass 50BT
Bass Amplifier

- 50 watt compact modeling bass amp with 6.5" loud speaker.
- Gate , EFX , Amp Model, IR, Modulation, Reverb.
- Drum & Loop (60s phrase loop).
- Bluetooth Audio Stream.
- Free APP controller.
- USB recording interface , firmware update, edit software.
- Dimensions: 300mm(L) x 225mm(W) x 326mm(H)
- Weight: 7.2kg



Mighty Plug PRO
Guitar and Bass Amp Modeling Earphone Amplug

- Small but mighty.
- TS/AC-HD (White-Box) Amp Modeling algorithm
- 512 samples IR resolution.
- 7 presets with ACTIVE functions.
- GATE, CMP, EFX, AMP, IR, EQ, MOD, DLY, RVB effect blocks with free order.
- White-box algorithm EFX offers analog response and natural chaos.
- Stereo DLY / RVB effects with gorgeous tone.
- Patch Level function for each preset.
- 5hrs playing time. (Battery: 3.7V / 1450mAh)
- Intuitive MightyAmp™ App & Mighty Editor™ edit software (3rd party IR loader).
- Dimensions: 81mm(L) x 41mm(W) x 30mm(H)
- Weight: 70g



Mighty Plug
Guitar and Bass Amp Modeling Earphone Amplug

- 13 Amp Models, 20 Impulse Response files including guitar and bass cabinets and acoustic guitar simulation, 19 types of effects
- True Simulation of Analog Circuit by NUX EFX
- Physical Amp Modeling Algorithm
- Long Lasting Rechargeable Built-in Li-battery
- Dual Mode Bluetooth 4.2
- Bluetooth Audio EQ Scenes
- Dimensions: 81mm (L) x 41mm (W) x 30mm (H)
- Weight: 62g

[To be continued....]



NPA-100
Personal Monitor Amplifier

- 120-Watt powerhouse
- Dual-channel inputs with dedicated volume controls
- 3-band EQ (Bass, Middle, Treble)
- 12" woofer and two 2" tweeters
- Two XLR outputs with differential capabilities
- 1/8" AUX IN
- Input Impedance: Channel 1: 10kΩ Channel 2: 10kΩ
- AUX INPUT: 10kΩ
- EQ Bass: ±10dB (20Hz to 360Hz) Middle: ±10dB (360Hz to 4kHz) Treble: ±10dB (4kHz to 20kHz)
- Dimension: 463mm(L) x 434mm(W) x 405mm(H)
- Weight: 15.8kg



PA-50
Personal Monitor Amplifier

- Dual input Channels
- 3 band equalizer
- 50W RMS
- High sensitive 6.5" woofer, 1" tweeter
- 1/8" AUX IN
- Input Impedance: Channel 1: 2.2MΩ Channel 2: 100 kΩ
- AUX INPUT: 6.6 kΩ
- EQ Bass: ±10Hz@80Hz(shelving) Middle: ±10Hz@1.8kHz(peaking) Treble: ±10Hz@15kHz(shelving)
- Dimensions: 361mm(L) x 364mm(W) x 325mm(H)
- Weight: 11.5kg



DA-30BT
Personal Monitor Amplifier

- 30 watts output
- 10 inch coaxial speaker
- Dual channels: 6.35 input * 2
- AUX IN
- Maximum bluetooth distance:10m
- Bass and treble adjust
- Dimensions: 430mm(L) x 390mm(W) x 340mm(D)
- Weight: 12kg

Stageman

Acoustic Guitar Amplifiers

Warm, Natural Sound for Guitar and Vocals

High-Sensitivity Speaker System
for Stage Performance

80 watts



60 watts



Stageman II

CHARGE

AC-80

Battery-Powered Acoustic Amplifier

- 80 watts rich warm sound acoustic amp with 6.5" premium speaker and 1" tweeter
- 2 independent channels with routing adjustable post-effects
- Acoustic Impulse Response
- Battery power for busking
- Drum & Loop (60s phrase loop)
- Bluetooth Audio Stream
- Free APP controller
- USB firmware update
- Dimensions: 310mm(L) x 280mm(W) x 328mm(H)
- Weight: 9.8 kg



AC-25

Portable Battery-Powered
Acoustic Amplifier

- 25W warm sound with Amp Modeling technology(Stageman / LBox)
- Plate & Hall reverb
- Dual channel for instrument and mic
- Battery power for 4 hrs performing
- Bluetooth for APP & Audio Stream
- AUX IN, PHONE OUT, LINE OUT
- Input impedance: CH1= 1M ohm, CH2= 2K ohm
- Dimension: 280mm(L) x 218mm(D) x 220mm(H)
- Weight: 5 kg



Stageman II

STUDIO

AC-60

Natural Sound Acoustic Amplifier

- 60 watts rich warm sound acoustic amp with 6.5" premium speaker and 1" tweeter
- 2 independent channels with routing adjustable post-effects
- Acoustic Impulse Response
- Drum & Loop (60s phrase loop)
- Bluetooth Audio Stream
- Free APP controller
- USB firmware update
- Dimensions: 310mm(L) x 280mm(W) x 328mm(H)
- Weight: 9.2 kg



Stageman App

Compatible with both iOS and Android Devices



Download Stageman App for free from the app store

8 Acoustic IRs, 12 Effects, 6 Signal Block Routings, Looper & Drum and more! Connect to Stageman App to enable all the features and control everything from your smart phone. You can also stream your favorite music from your phone via Bluetooth Audio.

Electronic Drums

DM-8

NUX Electronic Drums
All Mesh Head Kits
Heads by REMO



DM-8

All Mesh Head Electronic Drum Kit



The newest model DM-8 equipped with independent snare and hi-hat. The 12-inch snare drum and 10-inch tom pad provide you with a larger hitting surface and a more comfortable drumming experience. The new snare drum supports three drumming methods: head stroke, cross stick and rim shot. Also, the newest kick drum is equipped with mesh pad. The 10-inch kick drum can be perfectly used with double pedal.The brand new sound library will give you the perfect drumming experience. And we provide 6 different effects for users to adjust, which makes it suitable for a variety of environments. The newly added group fader on the Module can adjust the volume of each drum at any time.

- TOM*3(Dual-zone), SNARE*1(Three-zone, head, rim, rim shot), HIHAT*1(Dual-zone), CRASH*2(Dual-zone), RIDE*1(Three-zone, bow, edge, bell), KICK*1(Single-zone)
- 30 sets of self-sampling tones, the number of single tones is about 300
- 48 sets of drum sets (30 sets of presets, 18 sets of user-defined sets)
- USB AUDIO(14 tracks), USB MIDI, USB flash drive
- PAD EQ, PAD COMPRESSOR, MASTER EQ, MASTER COMPRESSOR, OVER DRIVE, REVERB



DM-7X

All Mesh Head Electronic Drum Kit



NUX collaborates with REMO, the world-renowned drumhead brand, and equips DM-7X with all REMO mesh heads. Enhanced by the latest Dual-Triggering technology (head and rim), DM-7X's 10" snare and 8" toms provide precise triggering, large strike area, together with authentic acoustic feel. Meanwhile, you can set parameters for the velocity-sensitive triggers and cymbals, to ensure the most accurate and natural response. DM-7X also features 30 precisely sampled studio kits, built-in effects, recording function, 5 types of coach functions, and a customizable sound library. It delivers the most realistic sounds and feel while further expanding the playability.

- 8" Tom x3, 10" Snare x1, 12" Hi-Hat x1, 12" Crash x2, 14" Ride x1, Hi-Hat Control x1, Kick x1, Kick Pedal x1
- TAP/Metronome, Rhythm, Tempo Rate, Volume, EFX
- MIDI Data through USB Port
- Headphone, Output, Power In, USB MIDI, AUX In, Tom4 Trigger-In
- All Mesh Drum Heads



DM-7

All Mesh Head Electronic Drum Kit



DM-7 is a professional electronic drum set equipped with all mesh heads. (Snare head made by REMO) Enhanced by the latest Dual-Triggering technology (head and rim), DM-7's 8" snare and 6.5" toms provide precise triggering, large strike area, together with authentic acoustic feel. Meanwhile, you can set parameters for the velocity-sensitive triggers and cymbals, to ensure the most accurate and natural response. DM-7 also features 30 precisely sampled studio kits, built-in effects, recording function, 5 types of coach functions, and a customizable sound library. It delivers the most realistic sounds and feel while further expanding the playability.

- 6.5" Tom x3, 8" Snare x1, 12" Hi-Hat x1, 12" Crash x2, 14" Ride x1, Hi-Hat Control x1, Kick x1, Kick Pedal x1
- TAP/Metronome, Rhythm, Tempo Rate, Volume, EFX
- MIDI Data through USB Port
- Headphone, Output, Power In, USB MIDI, AUX In, Tom4 Trigger-In
- All Mesh Drum Heads



DM-210

Electronic Drum Kit

DM-210 is a new entry-level e-drum set equipped with all mesh drum pads. You can find the right feeling for you by adjusting the tightness of the mesh heads. Moreover, the independent kick drum is specially designed for DM-210. You will get the perfect drumming experience when you play on it. The new sound library specifically for DM-210 covers all music styles, and you can further adjust the reverb effect. If you get bored of practicing basic skills, and want some jamming music, just click the Song button and play the drums with demo songs we prepared for you. You can also use the aux-in interface or Bluetooth to play your own tracks.

- 8" Tom x3, 8" Snare x1, 10" Hi-Hat x1, 10" Crash x1, 10" Ride x1, Hi-Hat Control x1, Kick x1, Kick Pedal x1
- Metronome, Coach, Reverb, REC, Songs, Bluetooth
- MIDI Data through USB Port
- Headphone, DC-9V, L/MONO R Output, Aux In, USB, Cymbal Trigger In
- All Mesh Drum Heads



DM-310

Electronic Drum Kit



The NUX DM-310 drum kit features high quality sound library and various practical functions. The DM-310 has a very natural feedback mesh head, which is more similar to the rebound of an acoustic drum head, and the larger mesh head allows the drummer to be more confident and relaxed during performance. DM-310 come with many useful function, especially the USB audio function. The DM-310 module also serves as an audio interface, with the ability to send stereo audio and MIDI data to a Mac or Windows computer via USB. This allows you to record discrete and MIDI drum tracks in any DAW, or trigger sounds from software based drum instruments for studio or live playing. Additionally, you can record up to 9 separate audio tracks into your favorite DAW.

- 10" Snare x1, 8" Tom x2, 10" Tom x1, 10" Hi-Hat x1, 10" Crash x2, 10" Ride x1,
- Hi-Hat Control x1, Kick x1, Kick Pedal x1
- USB audio, TRRS interface, Metronome, Coach, Reverb, REC, Bluetooth module
- Audio and MIDI data through USB port.



DM-110

Electronic Drum Kit



The DM-110 is a super portable entry-level electronic drum kit in the NUX digital drum series. Building on the foundation of the DM-1X, the DM-110 features an upgraded design and enhanced drum pad structure. It's more compact, with a layout that closely resembles an acoustic drum setup, and it includes a new 6-inch standalone rubber bass drum for a more authentic and expressive playing experience.

The DM-110 sound module boasts a streamlined control panel with just three easy-to-use buttons, making it incredibly user-friendly. Plus, you can connect it to your mobile device for more advanced and detailed control options. The DM-110 offers a wide range of multi-sampled drum sounds that cover various music styles, including rock, blues, jazz, metal, and traditional Chinese styles. It comes loaded with 12 high-quality preset drum kits, along with 3 customizable user kits, making it a perfect choice for any performer looking to explore their creativity.

- Snare x1, Tom x3, Hi-hat x1, Crash x1, Ride x1, Hi-hat Control x1, Kick x1, Kick Pedal x1, Module x1
- Headphone, DC-9V, L/MONO R Output , Aux In, USB, Cymbal Trigger In, Bluetooth
- Metronome, Reverb

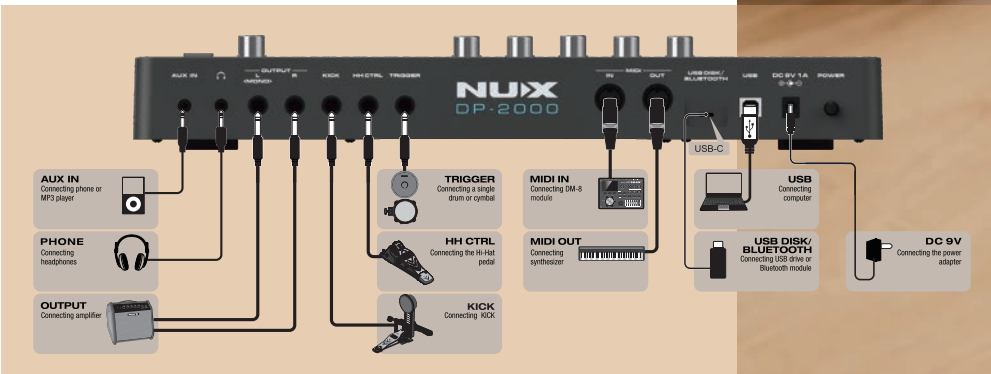
DP-2000

DIGITAL PERCUSSION PAD

Introducing the brand new NUX DP-2000, a powerful integrated percussion pad. With its 8 velocity sensitive independent strike pads, the DP-2000 not only includes the high standard acoustic drum samples from our flagship DM-8 kit, but it also includes folk percussion and electronic sound samples. What's more, you can expand your sound library by importing your own drum samples with a U disk. Additionally, the DP-2000 includes inputs for external triggers. Easily add a hi-hat pedal and external kick drum, making the DP-2000 a mini e-drum kit.

Specifications

●Colorful large screen, simple operation interface
●20 presets include all style
●Layer function can split a pad into two parts and assign sound separately
●USB port for connecting Bluetooth module and USB drives
●The Wavimport function allows for custom sound imports into the DP-2000
●Three additional interfaces can be connected for kick, hi-hat control, and other triggers
●New effector features provide more diverse sound options
●It can be used in conjunction with other e-drums or acoustic drums
●AUX IN, PHONES, OUTPUT, KICK, HH CTRL, TRIGGER IN, MIDI IN/OUT, USB DISK/BLUETOOTH MODULE, USB, DC IN 9V
●Dimensions: 408mm(L) x 314mm(W) x 62mm(H)
●Weight: 2.8 kg



High Quality Aound Library

The DP-2000 includes a selection of high quality acoustic drum samples from our flagship DM-8 and specially prepared percussion and electronic sounds to meet the artistic needs of musicians of different music styles. Further editing parameters enable you to assign and edit the position of each tone, pitch, phase and other detailed parameters.

Color Screen

The DP-2000 sports a newly designed UI interactive interface making for a smooth and positive workflow .

These 8 velocity sensitive strike pads all have LED lights, and the brightness changes with dynamic playing and tone length, making for an expressive light show on any darkened stage.

Effects

The DP-2000 includes six on board effects, which can be assigned to the percussion pads or as BUS effects via the FX function on the panel.

USB-C Port

Easily expand your sound library for the DP-2000, by making use of the included USB port and a USB drive loaded with your favorite drum and percussion samples. The DP-2000 also supports WAV music playback via USB drive, making it a great performance and practice instrument.

Of course, you can also connect to our NUX provided Bluetooth module NBT-1 through this USB-C port, which supports Bluetooth audio and Bluetooth MIDI functions.

Strike Pad and Expansion

Want to expand beyond the included pads? Not a problem. The DP-2000 includes three ¼" (6.35mm) jacks can be connected to an extra trigger, hi-hat pedal, and a kick drum pedal, enabling you to create a set of mini but mighty electronic drums.

Even More Possibilities

The DP-2000 will find its way into your drumming ecosystem, either onstage next to your acoustic drum kit, or use the MIDI In/Out ports make it a secondary drum brain by connecting it to your already existing e-drum kit.

High quality professional pad





Seamless DAW Integration

Bundled with Cubase LE, the NTK Series effortlessly maps to most DAW software, offering quick and automatic matching. This ensures perfect harmony between the physical controller and your digital audio workstation, including faders, signal transmission, and channel or pan controls. Simply select your preferred DAW on the device, follow the setup guide, and enjoy instant compatibility with various VST instruments for real-time creation and mixing.



Total Control, Infinite Possibilities

The lightweight NTK is equipped with semi-weighted keys with touch curve options for a satisfying touch and creative inspiration. Its Aftertouch feature lets you link any desired sound effect (EXP, MOD, PITCH, etc.) to the aftertouch response, enhancing the authenticity and dynamic range of your sound creation.



Intuitive Control Features

Enhance your production efficiency with the built-in mouse trackpad, ideal for both stage performances and studio compositions. Essential features like note repeat and an arpeggiator cater to popular music styles, including pop, hip-hop, and electronic. The onboard MIDI mode allows quick CC controller matching between hardware and virtual instruments, with customizable layouts that you can save and recall as needed.



Quick Presets

Switch instruments effortlessly between drum pads and keyboard with channel changes, enabling dual-hand control of two VST instruments. Utilize the NUX NTK Editor software for rapid device preset management, or download supported preset files for quick control of various DAWs and virtual instruments.

NTK-37

MIDI Controller Keyboard



New!

- Keys: 37 full-size semi-weighted velocity-sensitive keys
- Sliders: 9 sliders
- Functions: Aftertouch, Arpeggiator (7 Types), Smart Scales (16 Scales), Key Touch Curves (5 Types), Key Touch can be Fixed 64 or Fixed 127- DAW
- Controls: Play, Record, Stop, Rewind, Loop, Fast-Forward, Read and Write automation envelope
- Performance Controls: Pitch Bend Wheel, Modulation Wheel
- DAW Presets: 8+1 (User)
- User Scenes: 16 Scenes
- Dimensions: 745(L) x 210(W) x 74(H)mm
- Weight: 4.0 kg (8.0 lbs)

NTK-61

MIDI Controller Keyboard



New!

- Keys: 61 full-size semi-weighted velocity-sensitive keys
- Pads: 8 velocity-sensitive pads (Bank A/B Button for expansion to 16 pads)
- Knobs: 8 knobs
- Sliders: 9 sliders
- Functions: Aftertouch, Arpeggiator (7 Types), Smart Scales (16 Scales), Key Touch Curves (9 Types), Key Touch can be Fixed 64 or Fixed 127
- DAW Controls: Play, Record, Stop, Rewind, Loop, Fast-Forward, Read and Write automation envelope
- Performance Controls: Pitch Bend Wheel, Modulation Wheel
- DAW Presets: 8+1 (User)
- User Scenes: 16 Scenes
- Dimensions: 1074(L) x 210(W) x 74(H)mm
- Weight: 5.5 kg (12.0 lbs)

NTK-49

MIDI Controller Keyboard



New!

- Keys: 49 full-size semi-weighted velocity-sensitive keys
- Knobs: 8 knobs
- Sliders: 9 sliders
- Functions: Aftertouch, Arpeggiator (7 Types), Smart Scales (16 Scales), Key Touch Curves (9 Types), Key Touch can be Fixed 64 or Fixed 127
- DAW Controls: Play, Record, Stop, Rewind, Loop, Fast-Forward, Read and Write automation envelope
- Performance Controls: Pitch Bend Wheel, Modulation Wheel
- DAW Presets: 8+1 (User)
- User Scenes: 16 Scenes
- Dimensions: 909(L) x 210(W) x 74(H)mm
- Weight: 5.0 kg (11.0 lbs)

NCK-330 Digital Piano

A Combination of Classic Piano and Modern Keyboard
Bringing Every Note to Life

The NUX NCK-330 digital piano, with its meticulous design and comprehensive upgrades, delivers exceptional sound quality and outstanding playing experience. The latest NUX WKJ-03 triple-sensor hammer-action keyboard and advanced sound processing technology, together with effects and functions like layered sounds, split keyboard, pianist accompaniment styles and customizable pedals, reproduce the real touch of a grand acoustic piano and meet the performance needs of different styles.

Besides, the NCK-330 supports various connection options including Bluetooth Audio and MIDI, USB Audio and MIDI recording. You can easily record video using your phone camera via OTG, play accompaniments via Bluetooth, connect to tutorial APPs, or trigger virtual instruments sounds... perfectly realizing your various needs for a contemporary keyboard.



USB AUDIO & MIDI Recording

With just one USB cable, you can use your phone or computer to record high-quality USB audio. Simply turn on the phone camera, if you prefer to record video and audio simultaneously. Simple and convenient.

Acoustic Piano Feel at Your Fingertips

The NCK-330 is equipped with NUX WKJ-03 Triple-Sensor Scaled Hammer-Action Weighted Keyboard with escapement and synthetic ivory/ ebony keytops. The touch response curves has been refined. You can select the ideal touch response to match your playing style, making your performance more expressive.

Rick and Dynamic Sounds

The NCK-330 features a total of 143 high-quality sounds, within which the grand piano sound comes from the latest sampling and processing of a German nine-foot grand piano. All sounds have been optimized, making them more realistic and expressive. With a maximum polyphony of 256, it meets nearly all the needs of players and music lovers.

Customizable Pedal-Unit with Half-Pedal Functions

The pedal unit of the NCK-330 supports half-pedal, authentically reproducing the delicate sounds of high-end acoustic grand and upright pianos.

Besides, the pedals of NCK-330 break through from the constraints of the traditional piano and can be flexibly customized. There are 7 options for you to assign to each of the pedals.



Bluetooth AUDIO & MIDI

NCK-330 can stream music from your phones/tablets via Bluetooth Audio. You can also connect the NCK-330 to APPs via Bluetooth MIDI.

Pianist Accompaniment Styles

With 50 built-in pianist accompaniments, you can choose the music style that suits you best. Whether it's classical or jazz, these accompaniment styles will help to inspire for more improvisation and creation and unleash your musical potential.

Professional Effects Adjustment

To provide you with an amazing sound experience, the NCK-330 includes professional reverb and chorus effects such as Room, Hall, Plate, and more, making the playing experience more exciting.



NPK-10

Portable Digital Piano

- 88-Key WKJ-03 Triple-Sensor Graded Hammer-Action Keyboard (with Escapement and Synthetic Ebony/Ivory Keytops)
- 5 Types of Touch Sensitivity
- 12 High-Quality Voices
- 189-Note Polyphony
- Layered Sounds (Mix Balance Adjustable), Split Keyboard (Individual Octave Shift and Tone Selection)
- Reverb and Delay (5 Types, Depth Adjustable), Chorus (4 Levels), Brilliance (5 Levels)
- Transpose/Octave, Master Tuning (415-460Hz), Metronome, 2 User Presets
- 12 Drum Patterns, 30 Demo Songs, Recording
- Bluetooth Audio, Bluetooth MIDI
- USB MIDI, Aux In, Line Out (L/MONO, R), Phones x 2, Damper (Included), Pedal Unit (Optional)
- 10W x 2 Amplifiers, 3" x 6" x 2 Oval Speakers System
- Dimensions: 1300mm(L) x 270mm(W) x 130mm(H)
- Weight: 11.9kg



NPK-20

Portable Digital Piano

- 88-Key WKJ-03 Triple-Sensor Graded Hammer-Action Keyboard (with Escapement and Synthetic Ebony/Ivory Keytops)
- 271 High-Quality Sounds in 7 Sound Groups
- 100 Auto Accompaniment Styles (Auto Chord, Sync Start, A/B Variations, Intro/Ending)
- 9-Band EQ, Tone Brilliance (5 Levels), Reverb (4 Types), Compressor (4 Types), Chorus, and Delay effects, with professional parameters to tweak
- Dynamic Microphone Input with Independent Gain Control and Reverb Effect
- 108-Note Polyphony
- Touch Sensitivity (5 Levels), Split Keyboard, Layered Sounds, Transpose/Octave, Metronome (4 Sounds), 7 User Presets
- Recording (5 Tracks), 100 Demo Songs
- Bluetooth Audio, Bluetooth MIDI, USB MIDI, Aux In, Line Out (L/MONO, R), Phones x 2, Microphone Input, Damper (Included), Pedal Unit (Optional)
- 10W x 2 Amplifiers, 3" x 6" x 2 Oval Speakers System, TFT LCD 800x480dpi Display
- Dimensions: 1300mm(L) x 270mm(W) x 130mm(H)
- Weight: 11.9kg



NEK-100

61- Key Portable Keyboard

- Sounds:500
- Touch Sensitivity:5 levels
- Reverb:3 types(hall,plate,room)
- Transpose:-12 to +12 in semitones
- Octave Shift: -1 to +1 octaves
- Layered Sounds: Yes
- Split Keyboard: Yes (split point adjustable; individual octave shift and tone selection)
- User Presets: 5 memory banks
- Metronome: 9 beats, 4 sounds, 40-240bpm
- Live Music Songs: 20
- Demo Songs: 100
- Auto-Accompaniment: 100 styles (auto chord, single/multi fingering, sync start, A/B variations, intro/ending)
- Bluetooth: Bluetooth MIDI, Bluetooth Audio (Optional)
- A4=440Hz(420Hz-460Hz)
- Built-in rechargeable battery
- Dimensions: 925mm(L) x 252mm(W) x 80mm(H)
- Weight: 3.1kg



NCK-330

Digital Piano

New!

- 88-key scaled hammer action keyboard (with Escapement)
- 7 types of touch sensitivityPiano sets: 15
- Tones: 128(GM)
- Demo Songs: 100
- Auto-Accompaniment: 50 pianist styles
- 128-note polyphony
- Dual voice(mix balance adjustable)
- split keyboard(split point adjustable; individual octave shift and tone selection)
- Octave Shift: -1 to +1 octaves
- Transpose: -6 to +5 in semitones
- Metronome: 9 beats, 4 sounds, 40-280bpm
- Recording: 5 songs (automatic accompaniment recording)
- Reverb:3 types (hall, plate, room), Chorus, Delay
- Speaker setting: 3 type
- Pedalssetting: Mod, Vol, Exp, Pitch±, Sustain, Sostenuto, Soft
- Auto-Sleep: Yes (5 type)
- Bluetooth: Bluetooth MIDI, Bluetooth Audio(optional)
- USB Midi/Audio, AUX IN, LINE OUT, 2 Phones
- 15Wx2 amplifier, 4.5" x 2 speaker system
- Dimensions: 1354mm(L) x 344mm(W) x 789mm(H)
- Weight: 40kg



WK-310

Digital Piano

- 88-key scaled hammer action keyboard (with Escapement)
- 4 types of touch sensitivity
- 128 voices, 1 standard percussion kit
- 180-note polyphony
- Dual voice, split keyboard, reverb, chorus
- 52 demo songs, recording, metronome
- Bluetooth, USB MIDI, AUX IN, LINE OUT, 2 phones
- 10W x 2 amplifier, 4.5" x 2 speaker system
- Dimensions: 1354mm(L) x 332mm(W) x 772mm(H)
- Weight: 40kg



WK-400

Digital Piano

- 88-key scaled hammer action keyboard (with Escapement)
- 4 types of touch sensitivity
- 128 voices, 1 standard percussion kit
- 80-note polyphony
- Dual voice, split keyboard, reverb, chorus
- 52 demo songs, recording, metronome
- Bluetooth, USB MIDI, AUX IN, LINE OUT, headphone
- 10W x 2 amplifier, 4.5" x 2 speaker system
- Dimensions: 1370mm(L) x 420mm(W) x 820mm(H)
- Weight: 41kg



WK-520

Digital Piano

- 88-key scaled hammer action keyboard (with Escapement)
- 4 types of touch sensitivity
- 300 voices
- 180-note polyphony
- Dual voice, split keyboard, reverb, chorus
- Auto accompaniment (auto chord, variation, prelude/coda)
- 52 demo songs, 100 drum patterns, recording, metronome
- Bluetooth, USB MIDI, AUX IN, LINE OUT, 2 phones
- 10W x 2 amplifier, 4.5" x 2 speaker system
- Dimensions: 1370mm(L) x 470mm(W) x 850mm(H)
- Weight: 48kg



Piano Mate App

Download App for free from the app store

Just for **better life**



Fully Isolated
Power Supply
For
Effects Pedals

NMT-1 Multi Tester

{ Patch cable tester
DC cable tester
Pedal Current & Voltage meter
Tuner } 4 in 1

Practical
Powerful
Portable

NMT-1 is a 4-in-1 compact multi-tester that every valued guitarist should have one. It combines the function of patch cable tester, DC cable tester, pedal current meter and tuner. This will help a lot with your pedal board setups. Its built-in rechargeable Li-on battery allows you to use it wherever you go.

The cable tester function is available for both 1/4" TS/TRS patch cables and 2.1mm DC cables. And you can charge it through the USB-C port. Its easy-to-carry design is perfect for last-minute cable checks before heading to the gig.



ZEUS New!



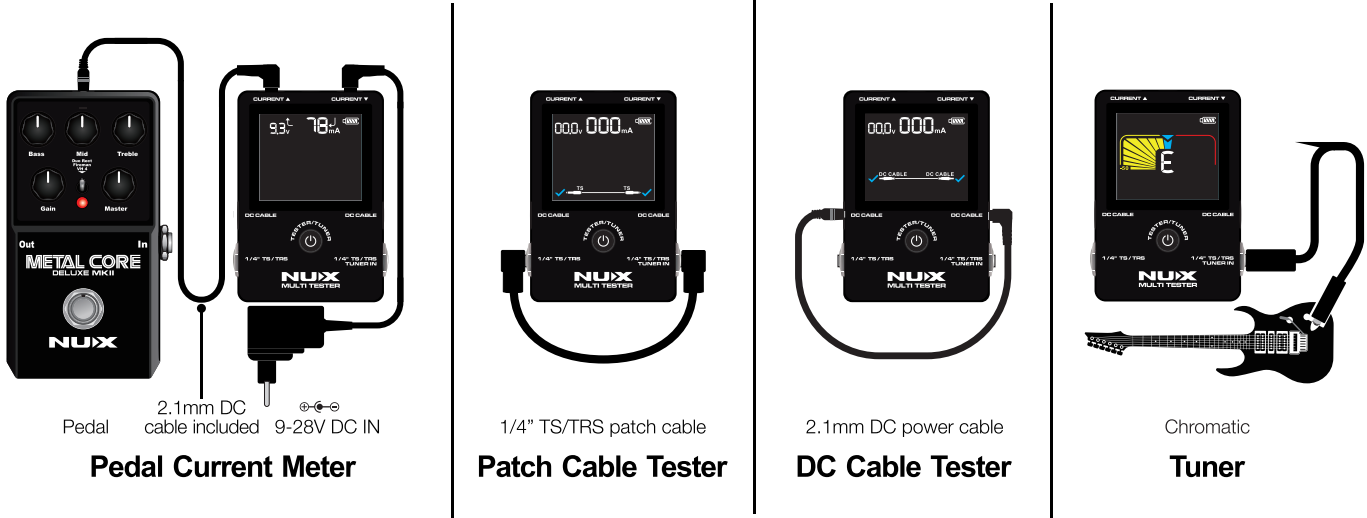
ZEUS Jr. New!

NIP-Z10

- AC input: 100-240Vac/50-60Hz/Max 80W
- Detachable IEC power cable included
- 6 high-current, fully isolated 9V outputs with center-negative polarity
- 500mA per 9V DC output powers nearly any pedal.
- 10 x DC Outputs: 9V / 500mA x 6, 9V/12V/18V adjustable x 3, 6V~12V tweakable x 1, USB 5V/1.5A for Pad
- 3 adjustable outputs provide 9V, 12V, 18V
- 9V provides 500mA, 12V provides 400mA, 18V provides 300mA
- The 6V~12V adjustable output provides maximum 6W (The output voltage is linearly adjustable, and the current follows the output voltage)
- The USB-A output provides 5V and 1.5A
- Dimensions: 194.3mm(L) x 104.5mm(W) x 42.1mm(H)
- Weight: 645g

NIP-Z6

- 15-24V DC in with anti-reverse connection
- 4 high-current, fully isolated 9V outputs with center-negative polarity
- 500mA per 9V DC output powers nearly any pedal(except one provides 300mA)
- 2 selectable outputs offer 9V, 12V, or 18V DC options
- 9V option provides 300mA, 12V option provides 225mA, 18V provides 150mA
- 6 x DC Outputs: 9V / 500mA x 3, 9V / 300mA x 1, 9V/12V/18V adjustable x 2
- Delivers a maximum of 21.6W
- 6 pedal cables included (5.5mm x 2.1mm barrel connectors, center negative, right angle to straight cables)
- 15V power adapter (FJ-SW20171504000), and IEC cable included
- Dimensions: 90mm(L) x 88mm(W) x 24mm(H)
- Weight: 184g



Pedal
2.1mm DC
cable included
9-28V DC IN
Pedal Current Meter

1/4" TS/TRS patch cable
Patch Cable Tester

2.1mm DC power cable
DC Cable Tester

Chromatic
Tuner

ACCESSORIES



NPB-S
Bumblebee Pedal Board

A small-size manageable pedal board with quality water-proof carrying bag.

- Supporting bars: 6 pieces
- Dimensions: 243mm(L) x 310mm(W) x 90mm(H)
- Weight: 1.3kg (2.1kg with carry bag)



NPB-M
Bumblebee Pedal Board

A medium-size manageable pedal board with quality water-proof carrying bag.

- Supporting bars: 8 pieces
- Dimensions: 243mm(L) x 445mm(W) x 90mm(H)
- Weight: 1.7kg (2.80kg with carry bag)



NPB-L
Bumblebee Pedal Board

A large-size manageable pedal board with quality water-proof carry bag.

- Supporting bars: 10 pieces
- Dimensions: 320mm(L) x 445mm(W) x 90mm(H)
- Weight: 2.3kg (3.6kg with carry bag)



NDT-03
Drum Throne



New!

DPS-1
Percussion Pad Stand

A stable stand for DP-2000 percussion pad. (It can also be used on the other brand's percussiton pad).



New!

NSH-01
Display Shelf

The NUX NSH-01 is a meticulously crafted show stand designed by the NUX team. It is exclusively available to authorized dealers for showcasing NUX products in retail stores.



NMP-2
Dual Foot-switch

A multi-purpose external dual foot-switch combines latch and momentary type switching into one unit. It works in passive mode (without a power supply). It is compatible with the NUX Loop Core, Loop Core Deluxe, MG-30 and more.



WTB-006
Foot-switch / Sustain Pedal

A universal sustain pedal.

- Sturdy metal housing and anti-slip rubber base
- Polarity switch design, compatible with all digital piano, keyboard and synthesizer.
- 6.35mm plug, 2 meter cable.



NSP-10
Sustain Pedal

A universal sustain pedal.

- Sturdy metal housing and anti-slip rubber base
- Polarity switch design, compatible with all digital piano, keyboard and synthesizer.
- 6.35mm plug, 2 meter cable.



NST-1
Pedal Topper Footswitch Cap

The NUX Pedal Topper is a stomp box foot switch cap that provides a stable and comfortable foot experience during performances.



WAC-001
Daisy Chain Cable

A five plug daisy chain cable that allows you to power a maximum of five pedals with one power supply.



Drum Rug

Dimensions: 133cmx133cm



NPS-1
Piano Stand (for NPK-10 and NPK-20)



NRC-14 / NCY-12
14"/12" Cymbals



ACD-006A
Switching Power Adapter

The ideal power supply for all NUX products.

- Input: 110 - 240V, 50 / 60Hz
- Output: 9V DC / 500 mA
- Polarity: center-negative
- Switching power technology



NUX Hoodie



NUX T-Shirt



NUX Cap



NDM-3
Dynamic Microphone



NUX Piano Bench



NUX Barstool