

HLV-391

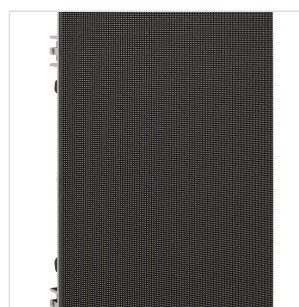
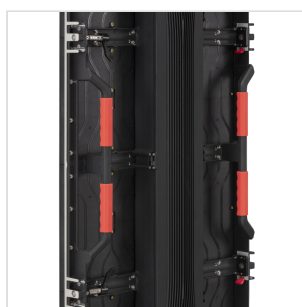
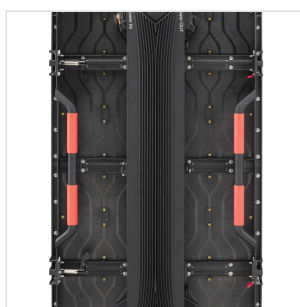
# LED MODULE FOR COMPOSITE SCREENS 3.91 MM PITCH

The **Crystal Series** completes the gamma of solutions that Helvia has to offer to the AVL professionals. The need to have a clean video, free from uncomfortable reflections, modular and compact, finds in the LED screens the weapon of choice for contractors and rentals all over the world.

The HLV-391 is the right choice for the applications that require a clear and intelligible, but also easy to install and durable in time, video output.

The Nationstar 1921 LEDs have become a quality standard for the category and the attention to detail, an all-italian feature, makes the HLV-391 ideal for the toughest situations. With a 140° angle of dispersion HLV-391 is not afraid of large areas, from the conference room to the city square.

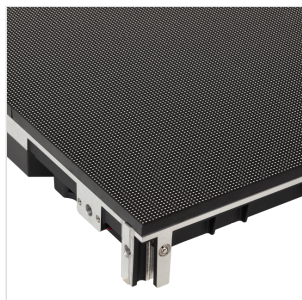
Available with **IP65 treatment** for external use and in the Mountain and Beach solutions, with optimized power supplies for the most extreme environments.



HLV-391

# LED MODULE FOR COMPOSITE SCREENS 3.91 MM PITCH

---



HLV-391

LED MODULE FOR COMPOSITE SCREENS 3.91 MM PITCH

PRODUCT DETAILS

KEY FEATURES

LED Module pitch 3.91 mm for indoor and outdoor use

Sturdy and easy to install

Aluminum frame

SPECIFICATIONS

Pixel Pitch	3.91mm
LED Type	Nationstar 1921
LED Configuration	SMD 3in1 RGB
Brightness	6000nits/sqm (automatic)
Pixel Density	65.536 pixrls/sqm
Module Size	W250mm x H250mm x D100mm
Number of Tiles per Module	2x4
Cabinet Size	W500mm x H1000mm
Pixels per Tile	128x256 dots
Cabinet Area	0,5sqm
Cabinet Weight	14,5 Kg
Recommended Viewing Distance	>3m
Cabinet Material	Die-Cast Aluminum
Maintenance	Back

HLV-391

# LED MODULE FOR COMPOSITE SCREENS 3.91 MM PITCH

---

Viewing angle	140°
Color temperature	2000-9300K
LED Lifetime	>100.000 hrs
Defect Rate	1/10.000 pixels
Contrast Ratio	5000:1
Input Power (Max)	500W/sqm
Input Power (Typical)	250W/sqm