

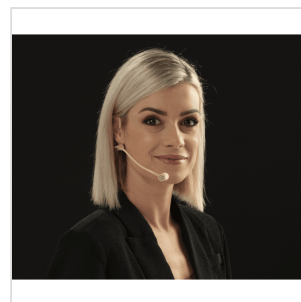
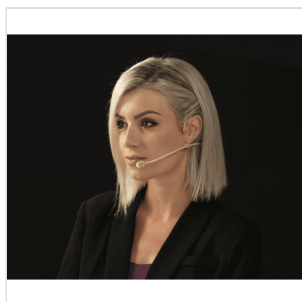
## VISAGE-C01D BG CARDIOIDE HEADSET MIC., 4-PIN MINI-XLR, BLACK, BEIGE (SHURE® TYPE)

Soundsation Visage C01 Headset microphone is the right balance between elegance, flexibility, discretion and strength. It allows singers, musicians, actors, public speakers, broadcast professionals, to **move freely** during their performance and always guarantee an accurate capture of the voice.

The frequency response and the excellent **plosive attenuation**, allow you to obtain a warm and sparkling sound, without unnatural emphasis.



4-Pin Mini-XLR connector (SHURE®)



VISAGE-C01D BG

# CARDIOIDE HEADSET MIC., 4-PIN MINI-XLR, BLACK, BEIGE (SHURE® TYPE)

## HIGHLIGHTS

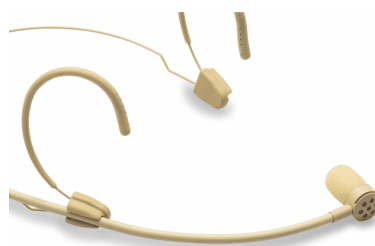


### FREQUENCY RESPONSE WITHOUT UNNATURAL EMPHASIS

Designed for withstand very close sound sources with superior plosive attenuation.

### WATERPROOF SELECTED MATERIAL

Selected plastic and metal materials to protect from contact with skin and aggressive chemicals (sweat, makeup, etc.)



VISAGE-C01D BG

**CARDIOIDE HEADSET MIC., 4-PIN MINI-XLR, BLACK,  
BEIGE (SHURE® TYPE)**

---

**LEFT OR RIGHT MICROPHONE  
PLACEMENT**

The flexible arm with the microphone capsule can be easily mounted on both left and right side of the headset, to better adapt to stage needs or user preference.

VISAGE-C01D BG

# CARDIOIDE HEADSET MIC., 4-PIN MINI-XLR, BLACK, BEIGE (SHURE® TYPE)

## PRODUCT DETAILS

### KEY FEATURES

Back-electret high-performance capsule for professional audio quality

Designed for withstand very close sound sources (provides off-axis rejection to high SPL sounds)

Cardioid pattern for accurate voice capture and minimum room noise

Waterproof selected material for maximum duration in any application

Microphone arm and cable are easily attached to frame

Special rubber material ear-set for perfect adherence to ear shape

Left or right microphone placement according to user preference

Available in Black or Beige

4-Pin Mini-XLR Connector (SHURE®)

Headset bag for better preserve the microphone

Color gift box for accurate storage and display

### SPECIFICATIONS

Element	Back-Electret Capsule
Directivity	Unidirectional
Frequency Range	45Hz~19.6kHz
Sensitivity	-46dBV(±3dB)
Maximum SPL	125dB
Output Impedance	200?

VISAGE-C01D BG

## CARDIOIDE HEADSET MIC., 4-PIN MINI-XLR, BLACK, BEIGE (SHURE® TYPE)

Operation Voltage	DC 1.5~9V
Connector	4-Pin Mini-XLR (SHURE®)* - it includes a 2.2kohm resistor between pin 2 and 3
Cable Length	1.5m
Color	Beige
Headset Weight	28g
Packing Size	162 x 122 x 54mm
Packing Weight	190g