

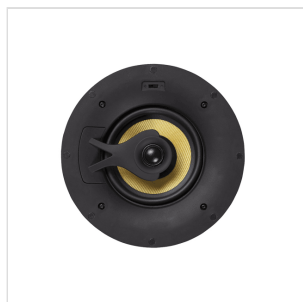
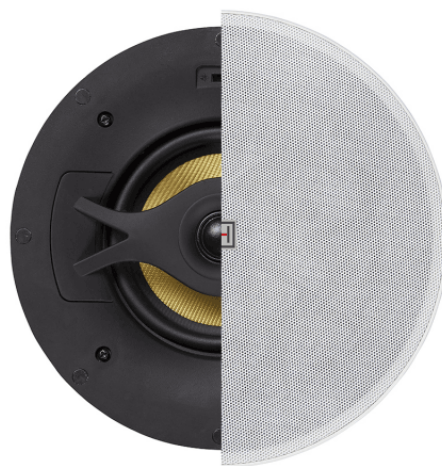
ONDA-540TFW

5.25" 2-WAY HI-FI LOW-IMPEDANCE COAXIAL IN-WALL/IN-CEILING SPEAKER

ONDA in-wall speaker series is born to satisfy all those indoor installations where sound pressure and quality higher than normal 70/100V systems are requested.

The ONDA speakers are all low-impedance (8ohm), coaxial, with Kevlar woofers, silk-dome tweeters, precision crossovers; essentially true 2-way speakers for professional applications, but ceiling/wall mount.

The look of the front panel is minimalist and captivating, and reminds recording studio monitor. The frame-less design, with black ABS frame and white magnetic grids, makes the ONDA speakers extremely discreet. Finally, the grids can be repainted to make them even less visible.



ONDA-540TFW

5.25" 2-WAY HI-FI LOW-IMPEDANCE COAXIAL IN-WALL/IN-CEILING SPEAKER

PRODUCT DETAILS

KEY FEATURES

2-Way Hi-Fi Coaxial Low-Impedance Loudspeaker
Frame-less Design with Magnetic Grille
Quick-Fit Mounting System with 4 Screws
40W RMS Power
High Excursion Kevlar Woven Cone Woofers
5.25" (135mm) Woofer Diameter
0.76" Silk-Dome Tweeter
Built-In Precision Passive Crossover
+/-2dB High-Frequency Attenuation Selector

SPECIFICATIONS

Speaker Type	2-Way Passive, Coaxial
Frequency Response (-10dB)	65Hz-20kHz
Sensitivity (1W @ 1m)	91dB
RMS Power	40W
Impedance	8 ohm
Woofer	5.25" (135mm), Kevlar Woven Cone
Tweeter	0.76" (20mm), Silk Dome
High-Freq. Attenuator	2-position switch (0dB/-2dB)

ONDA-540TFW

5.25" 2-WAY HI-FI LOW-IMPEDANCE COAXIAL IN-WALL/IN-CEILING SPEAKER

Housing	ABS
IP rate (speaker installed)	IP54
Mounting	Quick mounting system with 4 screws
Grille	Frameless Design, Magnetic Mount, Perforated steel with acoustic transparent foam inside, paintable
Color	Black Housing / White Grille
Cutout Size	Ø 194 mm
Product Size (WxDxH)	Ø 232 x 88 mm
Speaker Weight	1,23 kg
Packing Size (WxDxH)	255 x 250 x 92 mm
Packing Weight	1,43 kg