

## HYPER-PRO 12 PLUS

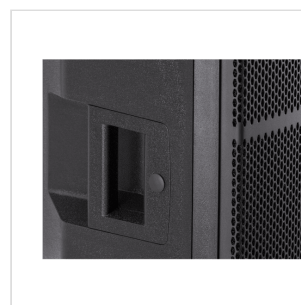
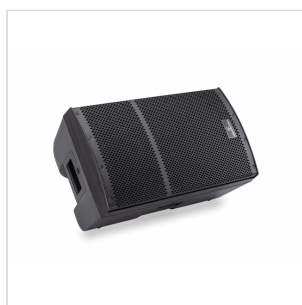
# 12" 2-WAY ACTIVE LOUDSPEAKER WITH DSP

The new Hyper-Pro Plus speakers represent a new important stage in the evolution of the famous **Hyper series** by Soundsation. The power, audio quality and convenience of the previous models are now integrated with the functions which are essential for those who professionally use a speaker as a work tool.

700W continuous **D-Class** speakers, selected woofers and compression drivers, **DSP** for Crossover control, EQ, **2-Band Limiter**, **phase alignment** and **delay optimization** of woofers and compression drivers. All this technology can ensure high performance and maximum audio quality in any use conditions.

The control panel includes two XLR-Combo Mic/Line inputs, the Mix output and **4 Audio Programs** (Music, Live, Monitor, Vocal) to quickly adapt the speaker to the main uses.

The stylish and sturdy cabinet is designed to be installed vertically on the floor or on a 35mm pole/tripod, and also suspended horizontally or vertically thanks to the 4 M8 fixing points.



# HYPER-PRO 12 PLUS

## 12" 2-WAY ACTIVE LOUDSPEAKER WITH DSP

### PRODUCT DETAILS

#### KEY FEATURES

2-way Loudspeaker, Bass-Reflex Design

700W Continuous / 1400W Peak Class-D amplifier

90°H x 60°V Coverage

DSP for Crossover, EQ and 2-Band Limiter Control, Phase and Time Optimization

4 EQ Presets (Music, Live, Monitor, Speech)

2 Mic-Line Combo Inputs and Balanced Mix Output

On-off key for the Front LED

35mm Adapter for Pole or Tripod Stand

4 Fixing Points for M8 Eyebolts

#### SPECIFICATIONS

|             |   |
|-------------|---|
| System Type | 2-Way Active 12" Loudspeaker, Bass-Reflex |
|-------------|---|

|              |                             |
|--------------|-----------------------------|
| Power Rating | 700W Continuous, 1400W Peak |
|--------------|-----------------------------|

|                    |            |
|--------------------|------------|
| Frequency Response | 45Hz-20kHz |
|--------------------|------------|

|         |           |
|---------|-----------|
| Max SPL | 130dB SPL |
|---------|-----------|

|           |                   |
|-----------|-------------------|
| LF Driver | 12" Custom Woofer |
|-----------|-------------------|

|           |                       |
|-----------|-----------------------|
| HF Driver | 1" Compression Driver |
|-----------|-----------------------|

|          |             |
|----------|-------------|
| Coverage | 90°H x 60°V |
|----------|-------------|

|                     |        |
|---------------------|--------|
| Crossover Frequency | 2.5kHz |
|---------------------|--------|

|                  |  |
|------------------|--|
| Input Connectors | 2x Balanced Combo XLR/1/4" Jack Connectors |
|------------------|--|

|                   |                            |
|-------------------|----------------------------|
| Output Connectors | 1x Balanced XLR Mix Output |
|-------------------|----------------------------|

## HYPER-PRO 12 PLUS

# 12" 2-WAY ACTIVE LOUDSPEAKER WITH DSP

|                     |  |
|---------------------|--|
| Indicators          | Power, Clip, Preset, Front Led   |
| EQ                  | 4 Presets (Music, Live, Monitor, Vocal)                                  |
| DSP                 | Crossover, EQ, Dual Band Limiters, Phase and LF/HF Time Alignment        |
| Controls            | 2x Channel Gain, Master Volume, Front Led On/Off, Ground Lift, EQ Preset |
| AC Power            | 100-120V~ or 220-240V~ 50/60Hz (User Selectable)                         |
| Power Consumption   | 360W Typical   |
| Cabinet             | Polypropylene  |
| Handles             | 2 on Sides, 1 on Top   |
| Monitor Angle       | 45°  |
| Finish              | Black  |
| Grille              | Powder-Coated Steel with Acoustic Foam                                   |
| Pole-Mount          | 36mm Pole Socket   |
| Flying Points       | 4x M8:   |
| Unit Size (WxDxH)   | 357 x 356 x 610 Mm (14.1" x 14" x 27")                                   |
| Net Weight          | 14,4 Kg - 31.7 Lbs.  |
| Carton Size (WxDxH) | 440 x 440 x 685 Mm (17.3" x 17.3" x 27")                                 |
| Packed Weight       | 16.8Kg - 37 Lbs.   |