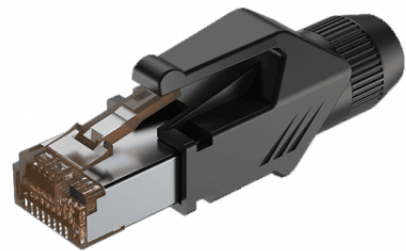


SM-C5RJ-PH

CAT5E RJ45 PLUG WITH PROTECTIVE HOUSING

Helvia SIGNUM series is a line of cables, connectors and adapters engineered and designed to meet the specifications required by contractors, system integrators and show industry professionals ranging from microphone cables to fire retardant, speaker and network cables, built with premium quality technologies and satisfying all the certifications required by the residential and commercial field.



SM-C5RJ-PH

CAT5E RJ45 PLUG WITH PROTECTIVE HOUSING

PRODUCT DETAILS

KEY FEATURES

Plug Type - CAT5e RJ45

Metal cable clamp holder for drain wire

Wire core Load bar easy for assembly

Nylon protective housing with special designed cable clamping system (suitable for max. cable diameter 6.8 mm)

SPECIFICATIONS

Protective housing

PA6

Contacts

Gold plated Bronze

RJ45 plug CAT5e, 150MHz, max. AWG26