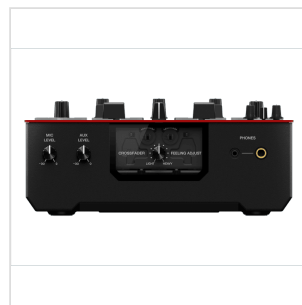
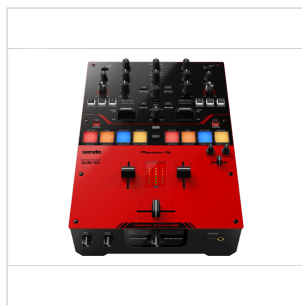
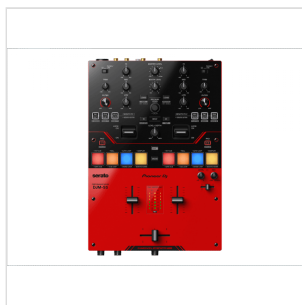


DJM-S5

SCRATCH-STYLE 2-CHANNEL DJ MIXER

PASSION ~~FOR~~ SCRATCH

This new scratch-style 2-channel DJ mixer for Serato DJ Pro is ideal if you've experimented with battle mixing and scratching and want to expand your skills. It's designed for those who want to dive straight in.



DJM-S5

SCRATCH-STYLE 2-CHANNEL DJ MIXER

HIGHLIGHTS



Inside story – MAGVEL FADER evolution

MAGVEL FADER PRO CROSSFADER

Find your perfect scratch feeling with the popular MAGVEL FADER PRO crossfader, which features Feeling Adjust so you can tweak the “weight” and get the level of resistance you like best. You can be confident in the fader’s robust design too; the knob mounting axis is highly rigid in the vertical direction so it can handle energetic scratch techniques.

EFFECT LEVERS

Use the 2 large effect levers to control up to 57 effects in Serato DJPro (including paid Expansion Packs). The levers are the same size as those on the flagship DJM-S11 and you can hold them down or release them to turn the effect on / off, or lock them on so your hands are free to browse and scratch tracks while the effect is still applied. There are also 2 banks where you can save effects, giving you quick access to your favorites.



DJM-S5

SCRATCH-STYLE 2-CHANNEL DJ MIXER

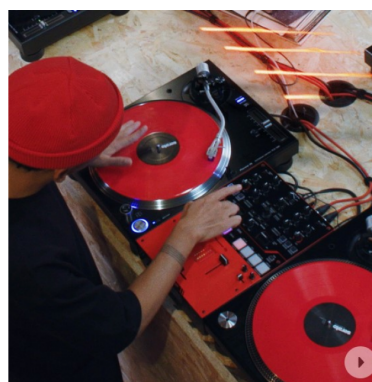


PERFORMANCE PADS

Get creative and experiment with 13 pad modes including Hot Cue and Sampler. Using the 4 Performance Pads on each deck, which measure 20.6 mm x 20.6 mm, you can trigger samples and find all kinds of new ways to “remix” your tracks live and add texture to the music.

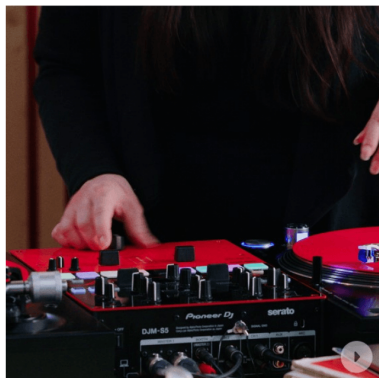
SCRATCH CUTTER

Start scratching straight away – even if you’ve never tried before. Simply choose one of the 6 cutting patterns and turn on the Scratch Cutter function with the effects lever, then move the control vinyl or jog wheel (when using DVS control) forward and backward on the deck and the DJM-S5 will do the rest. The mixer applies a cutting effect to the music in perfect time, emulating the popular transformer scratch technique without you moving the crossfader. This feature offers a great way to start learning to scratch; you can concentrate on getting your timing right with the control vinyl before moving on to the more challenging technique of using the crossfader.



DJM-S5

SCRATCH-STYLE 2-CHANNEL DJ MIXER



CROSSFADER HOT CUE

Turn on the Crossfader Hot Cue feature and you can quickly move the crossfader to create scratch-like sounds with a sample or track. Everytime you move the fader away from the edge, the track or sample on the relevant deck plays from the most recent Hot Cue point. So, you can quickly repeat the action to rapidly play the Hot Cue in the rhythm you use to move the crossfader – creating a scratch-like sound without the need to move the control vinyl on the deck.

USB BUS POWER AND STANDALONE MIXER VERSATILITY

The DJM-S5 is the first-ever Pioneer DJ mixer that you can power via the USB connection to your computer. Enjoy the extra flexibility this offers and, if you use portable turntables, the freedom to practice and perform literally anywhere you can carry your decks to: your garden, a park, or even the beach. It works as a standalone mixer too, so you can play music from a variety of sources such as analog vinyl records. And even though the mixer is USB powered, it produces a wide-ranging bright sound that brings out the best of all music genres.



DJM-S5

SCRATCH-STYLE 2-CHANNEL DJ MIXER

PRODUCT DETAILS

KEY FEATURES

MAGVEL FADER PRO crossfader

Effect levers

Performance Pads

Scratch Cutter

Crossfader Hot Cue

USB bus power and standalone mixer versatility

Serato DJ Pro

Serato DVS

SPECIFICATIONS

MAIN FEATURES

MIDI Control	Assignable (click here to see the details)
Compatible DJ Software	Unlocks Serato DJ Pro
DVS Control	Unlocks Serato DVS
Software System Requirements	visit serato.com for its specifications.
What's in the Box	DJM-S5, USB cable , Quick Start Guide, Precautions for Use, Warranty

TECH SPECIFICATIONS

Dimensions	Width 245 mm, Height 107.9 mm, Depth 363.5 mm
Weight	3.4 kg
Power Consumption	5V/500mA
S/N Ratio	108 dB (USB), 94 dB (LINE), 82 dB (PHONO), 75 dB (MIC), 94 dB (AUX)

DJM-S5

SCRATCH-STYLE 2-CHANNEL DJ MIXER

Distortion	0.003 % (USB) 0.007 % (LINE)
Master Level Meter Size	7 segment
CHANNELS	
EQ/ISO	3 band
EQ/ISO Range	−∞ dB to +6 dB
PERFORMANCE CONTROL	
Channels	2
Sound Color FX	Filter
Crossfader Type	MAGVEL FADER PRO
Mic Connection	XLR / 1/4-inch Combo Jack
SOUND CARD	
Sound card Connection	USB (Type-C)
Sample Rate	24 bit
Frequency	48 kHz
TERMINALS	
Terminals Inputs	2 PHONO/LINE (RCA) , 1 MIC (XLR & 1/4 inch Combo Jack) , 1 AUX (RCA)
Terminal Outputs: 1 MASTER (XLR), 1 BOOTH/MASTER (RCA) , 2 PHONES (1/4-inch stereo jack, 3.5-mm stereo mini-jack)	
USB	2 sets USB Type-C port (PC/Mac connection & power supply ×1, Only power supply ×1)