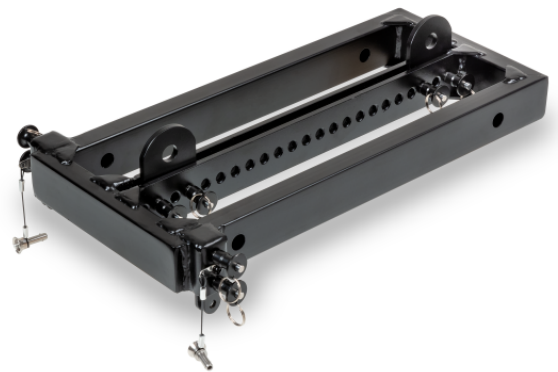


V26TOPRACK RIGGING "FLYING FRAME" FOR V26/V26A LOUDSPEAKERS

Aerial suspension rigging flying frame for V26/V26A loudspeakers. Featuring an array of high-tensile steel quick-release pins and a pre-drilled central bar, it ensures secure fastening and precise speaker splay angles, enabling clean top-down array connection. The system is structurally rated to safely support a maximum load of up to 16 V26/V26A units in a single vertical line array configuration.



V26TOPRACK RIGGING "FLYING FRAME" FOR V26/V26A LOUDSPEAKERS

PRODUCT DETAILS

SPECIFICATIONS

Dimensions	400 x 175 x 40 mm (15.75 x 6.89 x 1.57 in.)
Packaging Dimensions	460 x 250 x 90 mm (18.11 x 9.84 x 3.54 in.)
Weight	4 kg (8.82 lbs.)
Gross weight	5 kg (11.02 lbs.)
Colors	Black