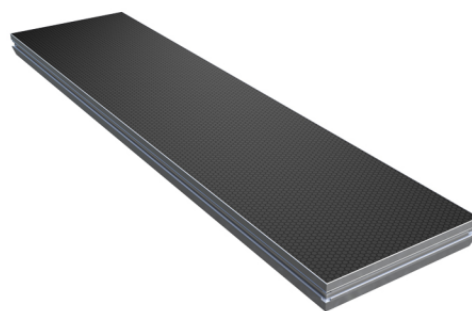


## CL-SDP-2X0.5

# STAGE PLATFORM 200 X 50 CM

Robust, versatile and lightweight aluminum stage platform designed for the construction of stages and scaffolding.

The construction materials also include outdoor plywood and anti-slip HEXA.



## PRODUCT DETAILS

### KEY FEATURES

Robust, versatile and lightweight stage platform.

Made of aluminium, outdoor plywood and anti-slip HEXA.

Capacity: Loading according DIN 15921 - Vertical:  $q=750\text{kg/m}^2$  Horizontal:  $q/20$

TÜV Rheinland certified

### SPECIFICATIONS

<b>Dimension (WxDxH)</b>	2000 x 500 x 89,5 mm
--------------------------	----------------------

<b>Weight</b>	17,5 Kg
---------------	---------