

KA104LIVE

4-CHANNEL LIVE POWER AMPLIFIER, 2500W @ 4Ω PER CHANNEL, DSP AND OSKAR SYSTEM

The Kommander-KA104LIVE is a fully featured, **4x 2500 W @ 4Ω** amplifier platform with **DSP** highly integrated into the K-array collection ecosystem. Tailored specifically for the demands of live entertainment scenarios, it features SpeakON and CA-COM connections ensuring pristine sound and complete control over the connected loudspeakers, either as a stand alone driving unit and in conjunction with other K-array amplifiers in complex and demanding applications.

The dedicated [K-array Connect mobile app](#) provides a user-friendly interface for remote control of the DSP main parameters and easy configuration of the signal routing.

[K-framework3](#) is the managing and control software dedicated to professionals and operators looking for a powerful tool for loudspeakers system design and tuning of a large number of units over a wired LAN.



KA104LIVE

4-CHANNEL LIVE POWER AMPLIFIER, 2500W @ 4Ω PER CHANNEL, DSP AND OSKAR SYSTEM

HIGHLIGHTS



INTELLIGENT SOUND

The Kommander series is a line of powerful, intelligent amplifiers designed to elevate your audio systems. Featuring powerful DSPs and Class D amplifier modules, the Kommander series can adapt to any context and extend your sound like never before.

MAXIMUM POWER, GREATER COMMAND

With four to eight channels of amplification, each Kommander amplifier can drive any K-array passive product with maximum power. Fully configurable with integrated DSP, the Kommander series allows for comprehensive control over equalization, routing matrix, delay, and more. Say goodbye to signal processors and take complete control of your sound.

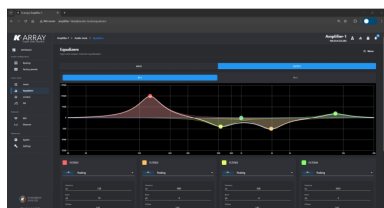
CHL	MODEL	QTY	IMP.	MATCH	QTY
1	KP102	1	LOW	NONE	0
2	KK102	1	LOW	NONE	0
3	KZ12	1	HIGH	NONE	0
4	KU210	1	LOW	NONE	0
5	KT22	1	LOW	NONE	0
6	KV52	1	LOW	NONE	0
7	KMT12P	1	LOW	NONE	0
8	KX12	1	LOW	NONE	0

Apply Configuration

LIMITER STATUS INFO E.B.S. LED

KA104LIVE

4-CHANNEL LIVE POWER AMPLIFIER, 2500W @ 4? PER CHANNEL, DSP AND OSKAR SYSTEM



MANAGING OF THE ENTIRE ECOSYSTEM THROUGH VARIOUS CONTROL PLATFORMS

The Kommander series integration with the next-generation intelligence operative system osKar enables you to **manage the entire ecosystem** through various control platforms. With new and advanced features regularly introduced with each release, the Kommander series is future-proofed and includes a USB player and a webstream receiver. Volumes, Signal Routing, as well as Presets are directly manageable through three different types of software and dedicated professional interface.

KA104LIVE

4-CHANNEL LIVE POWER AMPLIFIER, 2500W @ 4? PER CHANNEL, DSP AND OSKAR SYSTEM

PRODUCT DETAILS

KEY FEATURES

Class D audio amplifier

Powerful integrated DSP featuring multi-channel parametric EQ, precision filters, limiters and customisable routing with built-in delay

Integrated Electronic Brain (IEB) with osKar custom operating system

REST API for easy integration with third-party remote control systems

K-array Connect mobile app control

K-framework3 multiplatform software for loudspeaker system design, managing, tuning and control of multiple units

Designed for live entertainment scenarios with CA-COM connection for multichannel control

SPECIFICATIONS

Type 4ch switching mode, Class D Amplifier

Frequency Response 20 Hz - 20 kHz (± 1 dB)

Built-in DSP Grouping, Equalization, Limiters, Routing, Level, Loudspeaker presets

Remote Control Wi-Fi and Ethernet dedicated APP and Desktop software

Output Power 4x 2500W @ 4?

Connectors 4x XLR-F bal INPUT | 4x XLR-M bal LINK OUTPUT | 2x SpeakON NL4 speaker OUTPUT - 1x CA-COM multichannel output | 1x Ethernet RJ45 4x USB-A Wi-Fi IEEE 802.11 b/g/n REMOTE CONNECTION | 1x PowerCon TRUE IN 1 x PowerCon TRUE Link POWER

Nominal Impedance minimum 4 ?

KA104LIVE

4-CHANNEL LIVE POWER AMPLIFIER, 2500W @ 4? PER CHANNEL, DSP AND OSKAR SYSTEM

MAIN 100-240V AC, 50-60 Hz with PFC

Operating Range

Power Consumption 600 W @ 8 ? load, Pink noise, 1/8 rated power

Protections Thermal protection, output short circuit, RMS output current protection, high frequency protection, power limiter, clip limiter

Dimensions 432 x 87 x 432 mm (16,99 x 3,4 x 16,99 in)

Weight 8,15 kg (18 lb)

Material Stainless Steel

IP Rating IP20