

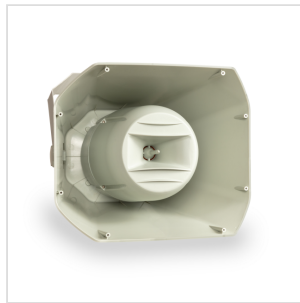
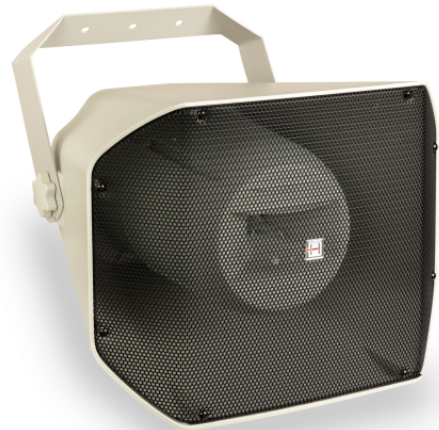
EVOCA-50MH

IP-66 50W 2-WAY MUSIC HORN SPEAKER

Horn speakers are generally designed for outdoor use and feature high directionality with a frequency response focused on the mid-range, making them suitable only for voice messages or safety information, such as evacuation alarms. If, in addition to these functions, you need to deliver music with a bandwidth approaching that of a Hi-Fi speaker, a 2-way coaxial horn like the EVOCA-50MH is needed.

The ABS housing with an internal structure protecting the 6.5" woofer and 1" dome tweeter provides an IEC529 IP-66 rating. The supplied sturdy C-bracket features an 11-position locking system with tilt angles ranging from +75° to -75°.

The quality of the speakers and the tuning of the housing allow for an extension of the frequency response from 200Hz to 20kHz, with a sensitivity (1W@1m) of 97dB. The power is 50W RMS and the operation can be on both 70/100V constant voltage lines and low impedance 8ohm. The internal line transformer with rear selector allows the choice of 4 power levels + 8ohm.



EVOCA-50MH

IP-66 50W 2-WAY MUSIC HORN SPEAKER

PRODUCT DETAILS

KEY FEATURES

2-Way Coaxial Horn Speaker

IP-66 Waterproof Rating

6.5" Woofer

1" Dome Tweeter

50W RMS Power

Built-in 70/100V Line Transformer with 3 Power taps + 8ohm selector

Adjustable C-Bracket with +/-75° Horizontal Angle Indication

Angle Coverage: 120°

SPECIFICATIONS

Type	2-Way Coaxial Horn Speaker
Protection Degree	IEC529 IP-66
Line Voltage	70V / 100V / 8ohm
Line Transformer	Built-in, 3 power taps (+ 8ohm)
RMS Power	50W @ 8ohm
Frequency Response	200Hz-20kHz
Sensitivity (1W@1m)	97dB
Woofer	6.5" Cone
Tweeter	1" Dome
Housing	ABS, paintable
Product Size (WxDxH)	390 x 425 x 310 mm (15.35 x 16.73 x 12.20 inches)

EVOCA-50MH
IP-66 50W 2-WAY MUSIC HORN SPEAKER

Speaker Weight	5,4kg (11.9 lbs.)
Packing Size (WxDxH)	400 x 315 x 435 mm (15.74 x 12.40 x 17.12 inches)
Packing Weight	6kg (13.22 lbs.)