

AIR 12 WHITE

12" TWO-WAY PASSIVE SPEAKER WITH COAXIAL WAVEGUIDE AND FIBERGLASS CABINET (WHITE)

Air 12 is a 12" + 1" coaxial speaker with a rigid, lightweight fiberglass cabinet, ideal for premium installations. It delivers detailed, linear sound, a wide 80°x80° coverage, and a peak output of 130 dB, with extended response from 75 Hz to 20 kHz and 98 dB sensitivity (1W/1m). The internal crossover ensures smooth transitions, while the compact design and custom finishes make it perfect for lounge bars, restaurants, clubs, and upscale residential spaces. The box also includes a low-profile flush-mount bracket with a fixed 30° downward tilt and Phoenix connector with Link Out for easy multi-speaker setups.



AIR 12 WHITE

12" TWO-WAY PASSIVE SPEAKER WITH COAXIAL WAVEGUIDE AND FIBERGLASS CABINET (WHITE)

HIGHLIGHTS

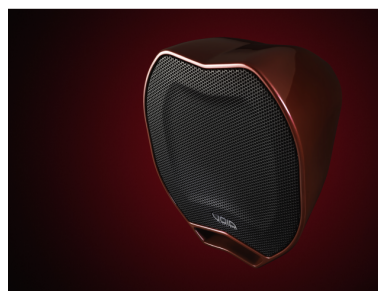


LOW-RESONANCE FIBREGLASS COMPOSITE CONSTRUCTION

The use of **fibreglass material** ensures a **rigid and stable enclosure**, minimizing cabinet resonance and contributing to **clearer and more accurate audio reproduction**.

HIGHLY REFINED, SPECIALIST COMPONENTS

Highly refined and specialist in-house designed components reinforce the Air 12's position in the pro audio market. A popular choice for high-end venues with its sleek composition, this multifaceted product encompasses the best of modern innovation.



AIR 12 WHITE

12" TWO-WAY PASSIVE SPEAKER WITH COAXIAL WAVEGUIDE AND FIBERGLASS CABINET (WHITE)



CUSTOM COLORS AVAILABLE UPON REQUEST

In addition to the 3 iconic Void brand colors -red, white and black- Air 12 can be produced in several other custom colors (the colors visible in the image are examples for illustrative purposes)

AIR 12 WHITE

12” TWO-WAY PASSIVE SPEAKER WITH COAXIAL WAVEGUIDE AND FIBERGLASS CABINET (WHITE)

PRODUCT DETAILS

KEY FEATURES

Compact two-way 12“ coaxial design: the 12” coaxial driver with integrated 1” tweeter ensures a point source of sound, providing a consistent and linear response throughout the frequency range.

Optimized 80° x 80° dispersion: the wide angle of coverage allows even sound distribution in rooms of various sizes, increasing clarity even in acoustically complex situations.

Ideal for fixed installations in upscale environments: with its elegant and discreet design, Air 12 is perfect for bars, restaurants, clubs, lounges, and even upscale residential settings.

Wall bracket included: the system comes with flush-mount bracket for easy and secure installations.

SPECIFICATIONS

Frequency Response	75 Hz - 20 kHz
Efficiency	98 dB 1W/1m
Crossover	passive
Nominal Impedance	8 ?
Power Handling	400 W AES
Maximum Output	124 dB cont, 130 dB peak
Driver Configuration	1 x 12”, 1 x 1” coaxial
Dispersion	80°H x 80°V
Connectors	Phoenix Connectors with link out
Enclosure	Fibreglass composite
Mounting	T80-style mounting, low profile flush-mount bracket included

AIR 12 WHITE

12" TWO-WAY PASSIVE SPEAKER WITH COAXIAL WAVEGUIDE AND FIBERGLASS CABINET (WHITE)

Grille	Perforated aluminum with foam filter and hydrophobic lining
Colors	White (RAL/Krome colors available upon request)
IP Rating	TBC (To Be Confirmed)
Recommended Amplifier	Q1.5+ or higher
Dimensions (W x H x D)	367mm x 424mm x 329mm (14" x 17" x 13" in.)
Weight	12.5 kg (27.6 lbs)