

VENU 14 v2

## COMPACT PASSIVE TWO-WAY 13.5" COAXIAL LOUDSPEAKER WITH ROTATABLE WAVEGUIDE AND CONTROLLED DISPERSION (BLACK)

The Venu 14 V2 enhances the flexibility of the Venu V2 range by introducing a 13.5" coaxial driver, delivering true point source performance in an ultra-compact format. Featuring a FEM-optimised neodymium motor design, this loudspeaker combines high performance with low weight, making it ideal for installations requiring powerful sound in limited spaces.

Its rotatable waveguide and controlled dispersion of 70° x 40° ensure precise coverage while minimising unwanted vertical reflections. The cabinet is built from 15 mm multi-laminate birch plywood, with M8 mounting points, Type 80 plate compatibility, and an optional 35 mm pole mount fixture, offering installation flexibility.

With a smooth frequency response from 65 Hz to 18 kHz, 400 W AES power handling, and a 130 dB peak SPL, the Venu 14 V2 delivers sonic reliability, crystal-clear detail, and high-output dynamics in any environment.



VENU 14 v2

# COMPACT PASSIVE TWO-WAY 13.5" COAXIAL LOUDSPEAKER WITH ROTATABLE WAVEGUIDE AND CONTROLLED DISPERSION (BLACK)

## HIGHLIGHTS

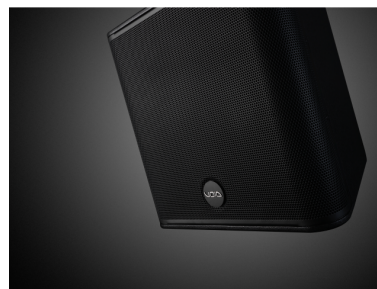


### TRUE, CONSISTENT POINT SOURCE OUTPUT ACROSS THE RANGE

Thanks to the **13.5" coaxial driver with rotatable waveguide**, Venu 14 V2 ensures **precise coverage and reduction of unwanted reflections**, even in complex installations.

## PREMIUM COAXIAL DRIVER

High audio performance and long-term reliability thanks to the **premium coaxial driver with neodymium magnet and FEM-optimized motor**, designed to deliver **high power, low distortion and efficient cooling**.



VENU 14 v2

## COMPACT PASSIVE TWO-WAY 13.5" COAXIAL LOUDSPEAKER WITH ROTATABLE WAVEGUIDE AND CONTROLLED DISPERSION (BLACK)

---



### CUSTOM COLORS AVAILABLE UPON REQUEST

The Venu 14 is ingeniously enhanced in aesthetics as well as functionality thanks to its colour customisation providing the chance to own a bespoke product that will compliment any location (the colors visible in the image are examples for illustrative purposes)

VENU 14 v2

COMPACT PASSIVE TWO-WAY 13.5" COAXIAL  
LOUDSPEAKER WITH ROTATABLE WAVEGUIDE AND  
CONTROLLED DISPERSION (BLACK)

PRODUCT DETAILS

KEY FEATURES

SpeakON™ and Phoenix connectors with link-through for fast, reliable installation

Electronic HF protection for increased long-term reliability

Integrated M8 flying points for flexible and secure suspension

Compact and lightweight design

Durable 15 mm birch plywood enclosure with textured polyurethane finish

SPECIFICATIONS

Frequency Response	65 Hz - 18 kHz ±3 dB
Efficiency	99 dB 1W/1m
Nominal Impedance	8 ?
Power Handling	400 W AES
Maximum Output	124 dB cont, 130 dB peak
Driver Configuration	1x 13.5" LF, 1x 1.4" HF coaxial
Dispersion	70°H x 40°V nominal coverage
Connectors	1x Phoenix with link out and 1x speakON™
Weight	16,5 kg (36,37 lbs)
Dimensions (W x H x D)	415mm x 418.5mm x 368.5mm
Enclosure	15 mm birch plywood
Finish	Textured polyurethane

VENU 14 v2

# COMPACT PASSIVE TWO-WAY 13.5" COAXIAL LOUDSPEAKER WITH ROTATABLE WAVEGUIDE AND CONTROLLED DISPERSION (BLACK)

Grille	Perforated steel with foam filter
Rigging	Yoke bracket positions 4 x M8 fixing points for type 80 plate Optional top hat
Colors	Black