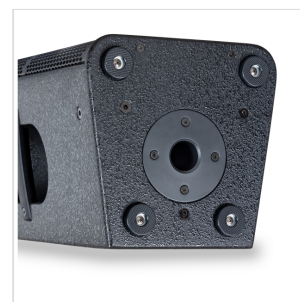
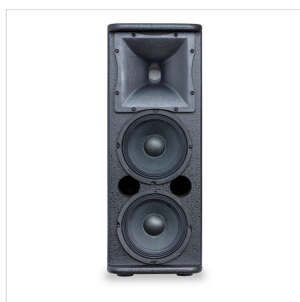


HYLE 62P 2X6.5" 2-WAY PASSIVE SPEAKER

When Audio-Video system integration goes through delivering premium sound quality throughout the entire audio spectrum and high sound pressure, it can only look at speakers with plywood housing, low-impedance systems, and selected transducers and crossovers. HELVIA knows very well what system integration professionals and users require: the answer is the new HYLE series, with passive 2-way vented speakers and power ratings from 360W to 1200W.

It features five models with woofers from 2x6.5" to 15". Compression drivers have voice coils from 1.35" to 1.75" and are mounted on symmetrical horns with constant directivity H90° x V60°. All models are made of eucalyptus plywood, a strong, durable and sustainable material. All are equipped with pole or tripod stand adapters with single 0° or double 0°-7° angle and have different handle arrangements as well as M6 or M8 mounting points, depending on size and weight.

We are essentially talking about speakers with established and functional architecture and technology, where only attention to details, reliability and durability can make a difference.



HYLE 62P

2X6.5" 2-WAY PASSIVE SPEAKER



HYLE 62P

2X6.5" 2-WAY PASSIVE SPEAKER

PRODUCT DETAILS

KEY FEATURES

2-Way speaker, vented

360W Rated Power

4 ohm Impedance

117 dB Maximum Sound Pressure

Frequency Response 75 Hz-20 kHz

2x 6.5" – 1.5" v.c. Woofer

1.35" v.c. Compression Driver

Crossover Frequency 3.0 kHz

H90° x V60° Symmetric Waveguide (rotatable)

Eucalyptus Plywood Housing

Speakon & Euroblock In/Link Out Connectors

8x M8 Fly points

36mm 0° Pole Mount Adapter

1 handle on the back

SPECIFICATIONS

Speaker Type	2-Way Passive Speaker
Frequency Response [- 10dB]	75 Hz-20 kHz
Sensitivity (1W @ 1m)	95 dB
Max SPL (PEAK)	117 dB
RMS Power	180 W

HYLE 62P

2X6.5" 2-WAY PASSIVE SPEAKER

Program Power	360 W
Peak Power	720 W
Impedance	4 ohms
HF Type	Compression Driver
HF voice coil	1"Exit - 1.35" Compression Driver
HF RMS Power	30W
AES / Program Power (see note)	60 W
Impedance	8 ohms
Crossover Frequency	3.0 kHz
Horn Type	Symmetric
Directivity (HxV)	H90°x V60°constant directivity horn
LF Type	Steel Frame / Ferrite Magnet Woofer
LF Diameter	2x 6.5"
LF voice coil	1.5"Voice coil
LF AES / Program Power	300 W
Impedance	4 ohms
Input Connector	1 x 2-Poles Speakon connector
Output Connector	1 x 2-Poles Speakon connector
Input/Output Connector	1 x 4-Poles Phoenix connector
Housing material and thickness	15 mm Plywood
Painting	Anti-scratch painting, black
Grille material and thickness	steel/1.2 mm
Flyable	M6:4pcs M8: 8pcs
Handles	one (on back)
Pole Mount	36mm 0° angle pole mount adapter
Speaker Size (WxDxH)	210 x 250 x 546 mm (8.27 x 9.84 x 21.50 in)