

HLV-1000-3.91

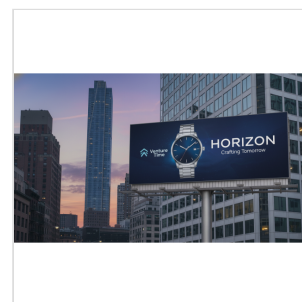
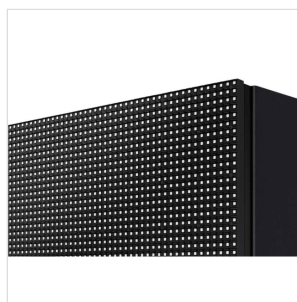
LED PANEL FOR MODULAR OUTDOOR FIXED- INSTALLATION SCREENS, PITCH 3.91, IP65, 1000×1000MM

The Helvia **King Kong** LED panel is designed to deliver vibrant, high-resolution visuals for professional outdoor applications such as billboards, commercial signage, and public displays.

Featuring a **3.91 mm pixel pitch** and **Nationstar SMD 1921 LEDs**, it provides crisp, clear images and text that remain highly legible even at close viewing distances. With a **brightness of 5500 nits**, content stays vivid and impactful under direct sunlight, while the **wide 160° × 160° viewing angle** ensures excellent visibility from virtually any perspective.

The panel's **IP65-rated** protection guarantees **full resistance to dust and water**, making it a reliable solution for long-term outdoor use. Equipped with **rear maintenance access**, servicing is fast and straightforward without the need to disassemble the entire installation. A **refresh rate of 2880 Hz** ensures **smooth, flicker-free playback**, while the modular design allows for seamless integration into large-scale setups.

Combining durability, brightness, and visual precision, this panel is ideal for any demanding professional outdoor display applications.



HLV-1000-3.91

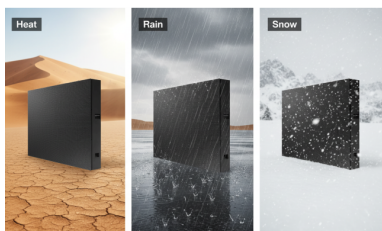
**LED PANEL FOR MODULAR OUTDOOR FIXED-
INSTALLATION SCREENS, PITCH 3.91, IP65,
1000×1000MM**



HLV-1000-3.91

LED PANEL FOR MODULAR OUTDOOR FIXED- INSTALLATION SCREENS, PITCH 3.91, IP65, 1000×1000MM

HIGHLIGHTS



DURABLE PERFORMANCE FOR DEMANDING OUTDOOR ENVIRONMENTS

IP65-rated design that provides complete protection against **dust, rain, and harsh weather**. Its rugged construction ensures stable, high-quality performance in a wide range of outdoor conditions, making it **ideal for permanent installations** such as billboards, building façades, and public information displays.

ENHANCED HEAT DISSIPATION FOR RELIABLE OPERATION

The cabinet is equipped with **a total of four high-efficiency fans**—two per door—to **maximize airflow and strengthen the LED screen's heat dissipation**. This optimized cooling design ensures stable performance, extended component lifespan, and reliable operation even in high-temperature outdoor environments.



HLV-1000-3.91

LED PANEL FOR MODULAR OUTDOOR FIXED- INSTALLATION SCREENS, PITCH 3.91, IP65, 1000×1000MM



EASY MAINTENANCE WITH A LIGHTWEIGHT ALUMINUM DESIGN

The rear service access allows **quick** and **convenient maintenance** without dismantling the entire setup, **reducing downtime** and **simplifying installation**. Its **lightweight aluminum cabinet** ensures easy handling and mounting, while maintaining strength and durability for long-term outdoor performance.

EQUIPPED WITH NATIONSTAR LEDs

Nationstar LED combines **advanced technology with durability**. Its high contrast ratio—thanks to a black substrate and matte encapsulation—delivers **sharp, vivid, and visually striking images**. With outstanding reliability, zero light leakage, and a failure rate below 10 PPM, it ensures consistent performance over time. The LED provides uniform and accurate colors, maintaining natural image quality even at low brightness levels. Its robust design also contributes to an extended lifespan, making it a dependable choice for a wide range of professional applications.



HLV-1000-3.91

LED PANEL FOR MODULAR OUTDOOR FIXED-
INSTALLATION SCREENS, PITCH 3.91, IP65,
1000x1000MM

PRODUCT DETAILS

KEY FEATURES

- LED Panel with 3.91 pixel pitch 1000x1000mm
- IP65-rated performance for reliable operation under tough environmental conditions
- Strong yet lightweight aluminum cabinet for durability and easy installation
- Modular design for precise, seamless alignment in large-scale or irregular setups

SPECIFICATIONS

Pixel Pitch	3.91 mm
LED Type	Nationstar SMD 1921
Cabinet Size (WxHxD)	1000 x 1000 x 150 mm
Cabinet Weight	52kg
Module Size	25 x 25 mm
Number of Tiles per Cabinet	16
Refresh Rate	2880 Hz
Brightness	5500 nits
Viewing Angle	160° x 160°
Maintenance	Rear
Input Power	220-240V 50/60 Hz
Power Consumption	900W(max.) - 400W(ave.)
Operating Temperature	-20°C to +60°C

HLV-1000-3.91

LED PANEL FOR MODULAR OUTDOOR FIXED- INSTALLATION SCREENS, PITCH 3.91, IP65, 1000×1000MM

LED Lifespan

100000 hrs

IP Grade

IP65