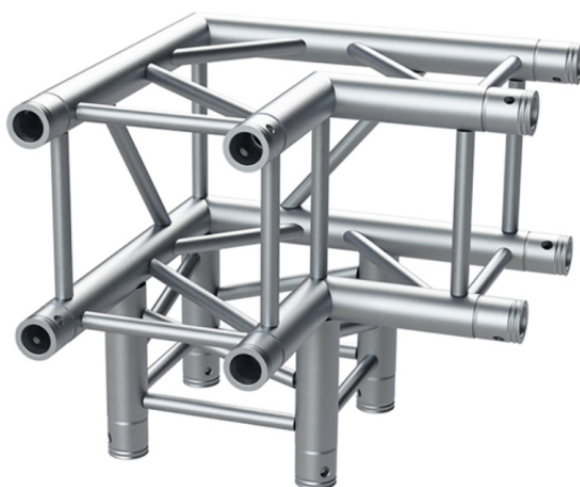


FP29Q C390

3-WAYS 90° JUNCTION CORNER WITH 29 CM SIDE FOR SQUARE TRUSS (29CBP)

Aluminium square truss structure section of 29 cm on each side. To form 90° corners. 3 way. Manufactured with main tube of 50 mm diameter and 2 mm thick, and auxiliary tube of 16 mm diameter and 2 mm thick. Silver or black colour. P SERIES compatible.



FP29Q C390

3-WAYS 90° JUNCTION CORNER WITH 29 CM SIDE FOR SQUARE TRUSS (29CBP)

PRODUCT DETAILS

KEY FEATURES

Available in silver and black color.

Other colors available upon request.

Compatible with EC 29 P truss.

Connections included.

SPECIFICATIONS

Main Tube Section	50 x 2 mm
Main Tube Alloy	EN AW 6082T6
Braces Section	16 x 2 mm
Braces Alloy	EN AW 6082T6
Surface Area Complete Truss	12,06 cm ² / 1,8693 in ²
Coupling System	CBC50P
N° Ways	3
Dimensions (H x W x D)	500 x 500 x 500 mm / 19,69 x 19,69 x 19,69 in
Material	Aluminum
Color	Silver