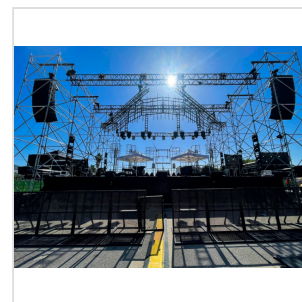
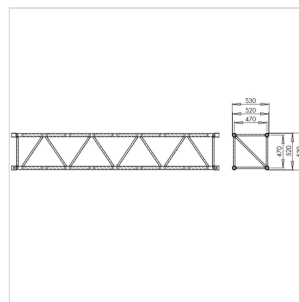
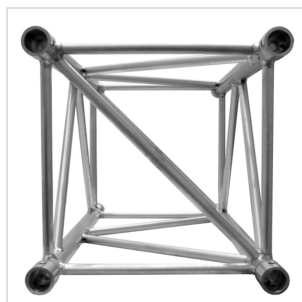


FK52Q H300

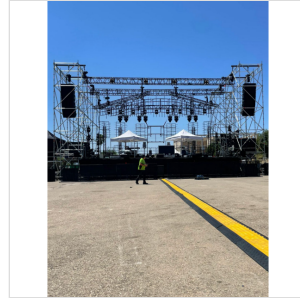
3 METERS SQUARE TRUSS SECTION FOR HEAVY LOADS (EC52C3)

Square truss section with a side length of 52 cm (53 cm from female to female), made with a main tube 50 mm in diameter and 4 mm thick, and a secondary tube 30 mm in diameter and 3 mm thick. Particularly suitable for assemblies with high load requirements. CBC60 conical connection system (oversized). Available in different sizes. Includes 4 double cones, 4 pins, 4 threaded pins and 4 'R' safety clips. Compatible with the FK SERIES.



FK52Q H300

3 METERS SQUARE TRUSS SECTION FOR HEAVY LOADS (EC52C3)



FK52Q H300

3 METERS SQUARE TRUSS SECTION FOR HEAVY LOADS (EC52C3)

PRODUCT DETAILS

KEY FEATURES

Standard dimensions: 0,5 - 1 - 2 - 3 Meters / 1,64 - 3,28 - 6,56 - 9,84 Feet

Other sizes available upon request.

Available in silver and black color.

Other colours available upon request.

SPECIFICATIONS

Main Tube Section	50 x 4 mm / 1,97 x 0,16 in
Main Tube Alloy	EN AW 6082T6
Diagonal Tube Section	30 x 3 mm / 1.18 x 0.118 in
Diagonal Tube Alloy	EN AW 6082T6
Weight	12,7 kg/m - 8.534 lb/ft
Area Section	23.12 cm ² / 3.5836 in ²
Connection System	CBC60
Weight	31,5 kg / 69.446 lb
Volume	0,8427 m ³ / 29.7597 ft ³
Material	Aluminium
Color	Black