

SONIX FS44

4-CHANNEL HI-PRECISION FEEDBACK SUPPRESSOR

SoniX FS44 is a Feedback Suppressor with 4 inputs and 4 outputs designed for all those conference applications and fixed installations where there are many microphones and many Larsen problems. This processor, thanks to its huge processing power, enables amazing results, even for users without in-depth knowledge of microphone pick-up techniques.

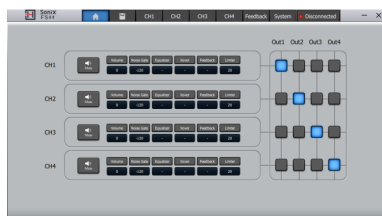
Using it is not difficult. Simply connect the 4 inputs to 4 microphones or 4 groups of microphones, the outputs to your sound system and use the microphones as usual, starting the "Auto check" function. In just a few minutes, the algorithms analyze the audio spectrum of all sources and set the 24 filters to achieve the best possible result. Then you can refine it manually. The 24 notch filters can also be divided into static and dynamic, depending on the depth of intervention required according to the complexity of the acoustic environment. The "scenes" can be stored in 12 presets and recalled from panel or PC.



SONIX FS44

4-CHANNEL HI-PRECISION FEEDBACK SUPPRESSOR

HIGHLIGHTS



HUGE PROCESSING POWER

The SoniX FS44 is based on 4th generation 450MHz/32-bit **SHARC processor**. AD/DA conversion is 24-bit with 96kHz sampling rate. Each channel has 48V Phantom, Noise Gate, 6-band PEQ plus HPF and LPF, automatic Phase/Frequency Shifting correction and Limiter.

SMART AUTO-SCAN WITH 24 CUSTOMIZABLE NOTCH FILTERS

The heart of SoniX FS44 processing is the **24 automatic notch filters** for each channel with automatic analysis function. The mix of static or dynamic notch filters can be set manually based on the "problematic nature" of the acoustics in which the processor works.



All editing and functions are accessible from the front panel, thanks to the color TFT display and simple and intuitive interface. It is also available a **PC software for Windows®** that be connected via USB or RS-485.

SONIX FS44

4-CHANNEL HI-PRECISION FEEDBACK SUPPRESSOR

PRODUCT DETAILS

KEY FEATURES

ADI's 4th generation SHARC processor

Core clock of up to 450MHz

Built-in 24-segment 4-channel independent high-precision adaptive digital notch filters

Automatic phase and frequency shifting functions

6-segment filters for each channel with 6-types of parametric filters/notch filters/high and low shelves/all-pass

Balanced Mic/Line Inputs with Phantom Power and Balanced Outputs

Limiter function for all 4 Channels

USB/RS485 remote connection function

PC software with multiple unit control

12 Scenes with save and recall function

Password locking function

SPECIFICATIONS

Input Channel	4 CH-XLR/TRS/LINE
Output Channel	4 CH-XLR
Frequency Response	20Hz-20kHz
Input Sensitivity	>-50dB
Input impedance	20kohm
Signal noise ratio	>95dB @ Input potentiometer MIN

SONIX FS44

4-CHANNEL HI-PRECISION FEEDBACK SUPPRESSOR

Auto Mix	Routing Setup
X-over	The high and low pass types/slopes/frequencies are selectable
EQ	Different filter types can be selected in 6 segments
Output Level	0dB
Scene	12 scenes saving and calling types
Notch Num	4X24 segments, with dynamic and static Settings available
Speed	High, medium and low can be set
Compressor	-48 ÷ +24dB
Panel Lock	Panel locking function with Password
Display	2.0" color TFT
Front panel control	USB interface, key encoding wheel Settings, 48V and BACK buttons
Rear panel control	In/Out connectors, Power connector, RS485 interface
Power consumption	<30W
Power supply	AC90V ÷ AC240V / 50-60Hz
Product Size (WxDxH)	483 x 226 x 45 mm (19 x 8.8 x 1.78 in.)
N.W / G.W.	2.8Kg / 3.2Kg (6.17 / 7.05 lbs.)