

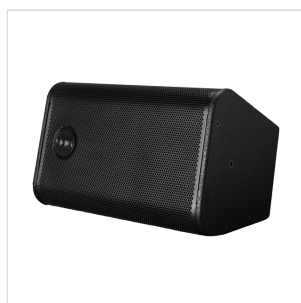
VENU 6v2

COMPACT PASSIVE TWO-WAY 6.5" LOUDSPEAKER WITH ROTATABLE ASYMMETRICAL HORN (BLACK)

The Venu 6 V2 is a compact passive loudspeaker designed to deliver high audio performance and versatile installation options. Featuring a 6.5" low frequency driver and a 1" compression driver mounted on a rotatable elliptical horn, it offers an extended frequency response from 75 Hz to 19 kHz ± 3 dB with 95 dB sensitivity, delivering clear, detailed sound across a wide range of environments.

Its robust enclosure, made entirely from 15 mm multi-laminate birch plywood, is finished with a durable textured polyurethane "TourCoat." The Venu 6 V2 is designed for easy and secure installation with dual speakON™ and Phoenix connectors featuring link-through, plus integrated M8 flying points. An optional top hat allows for touring applications.

Ideal for hotels, restaurants, bars, and lounges, this speaker combines high-quality sound with a discreet and customizable design, including color options.



VENU 6v2

COMPACT PASSIVE TWO-WAY 6.5" LOUDSPEAKER WITH ROTATABLE ASYMMETRICAL HORN (BLACK)

HIGHLIGHTS



EXTENDED FREQUENCY RESPONSE 75 HZ - 19 KHZ ± 3 DB FOR DETAILED AND NATURAL SOUND REPRODUCTION

The Venu 6 provides a wide and precise coverage across the audio spectrum, extending from low frequencies to high treble with excellent linearity. This ensures an audio playback rich in detail and naturalness, ideal for applications where clarity and sound fidelity are crucial.

ROTATABLE HIGH-FREQUENCY HORN FOR OPTIMAL DIRECTIVITY AND ADAPTABLE COVERAGE

The high-frequency driver's horn is designed to be easily rotated, allowing precise and flexible orientation of the sound field. This enables adaptation of the sound dispersion to the specific environment, enhancing acoustic coverage while minimizing unwanted reflections or dead zones.



VENU 6v2

COMPACT PASSIVE TWO-WAY 6.5" LOUDSPEAKER WITH ROTATABLE ASYMMETRICAL HORN (BLACK)



CUSTOM COLORS AVAILABLE UPON REQUEST

The Venu 6 is ingeniously enhanced in aesthetics as well as functionality thanks to its colour customisation providing the chance to own a bespoke product that will compliment any location (the colors visible in the image are examples for illustrative purposes)

VENU 6v2
 COMPACT PASSIVE TWO-WAY 6.5” LOUDSPEAKER
 WITH ROTATABLE ASYMMETRICAL HORN (BLACK)

PRODUCT DETAILS

KEY FEATURES

- SpeakON™ and Phoenix connectors with link-through for fast, reliable installation
- Electronic HF protection for increased long-term reliability
- Integrated M8 flying points for flexible and secure suspension
- Custom colors available upon request
- Durable 15 mm birch plywood enclosure with textured polyurethane finish

SPECIFICATIONS

Frequency Response	75 Hz - 19 kHz ±3 dB
Efficiency	95 dB 1W/1m
Crossover Points	2.4 kHz passive
Nominal Impedance	8 ?
Power Handling	200 W AES
Maximum Output	118 dB cont, 124 dB peak
Driver Configuration	1x 6.5” LF, 1x 1” HF compression driver
Dispersion	90°H x 60°V rotatable
Connectors	1x Phoenix with link out and 1x speakON™ with link out
Weight	9.5 kg (20.9 lbs)
Dimensions (W x H x D)	224mm x 372mm x 202mm
Enclosure	15 mm birch plywood

VENU 6v2

COMPACT PASSIVE TWO-WAY 6.5" LOUDSPEAKER WITH ROTATABLE ASYMMETRICAL HORN (BLACK)

Finish	Textured polyurethane
Grille	Perforated steel with foam filter
Rigging	Yoke bracket positions 4 x M8 fixing points for type 80 plate Optional top hat
Colors	Black (custom colors available upon request)