

VENU 215v2

## REFLEX SUBWOOFER WITH DOUBLE 15" TRANSDUCER, 4 ?, 1000 W (BLACK)

The Venu 215 V2 is a passive subwoofer featuring dual 15" transducers, engineered to deliver powerful and accurate low-frequency reproduction for both fixed and mobile applications. With its dual reflex-loaded configuration and high-excursion drivers with 4" voice coils, the Venu 215 V2 ensures deep extension down to 38 Hz, while maintaining high efficiency and superior dynamic response.

The enclosure, built entirely from 15 mm birch plywood, is solid and reliable, and includes a recessed connector panel that allows for flush-to-wall installation.

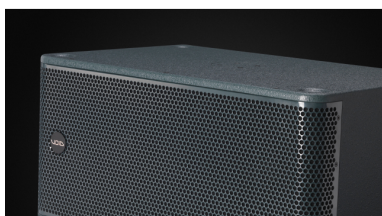
Designed for environments such as bars, clubs, lounges, hotels, and restaurants, the Venu 215 V2 is the ideal choice for those seeking extended low-end performance with professional-grade output.



VENU 215v2

# REFLEX SUBWOOFER WITH DOUBLE 15" TRANSDUCER, 4 Ω, 1000 W (BLACK)

## HIGHLIGHTS



### POWER AND PRECISION

The double **15" high-excursion driver** with **4" copper voice coil** delivers tight response and excellent thermal durability, ensuring **defined low-end even at high SPL levels**.

### DUAL REFLEX SYSTEM DESIGN FOR DEEPER BASS

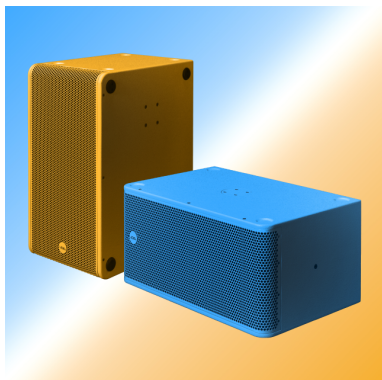
The compact dual reflex design allows for extended playback down to 38 Hz, making the Venu 215 V2 perfect for environments that require intense bass without excessive bulk.



VENU 215v2

## **REFLEX SUBWOOFER WITH DOUBLE 15" TRANSDUCER, 4 Ω, 1000 W (BLACK)**

---



### **CUSTOM COLORS AVAILABLE UPON REQUEST**

The Venu 215 V2 is ingeniously enhanced in aesthetics as well as functionality thanks to its colour customisation providing the chance to own a bespoke product that will compliment any location (the colors visible in the image are examples for illustrative purposes)

VENU 215v2

# REFLEX SUBWOOFER WITH DOUBLE 15" TRANSDUCER, 4 ?, 1000 W (BLACK)

## PRODUCT DETAILS

### KEY FEATURES

Recessed connector panel for discreet flush-wall placement without sacrificing accessibility or robustness

15mm birch plywood cabinet, compact and durable

Bracket positions available for wall or ceiling mounting

M20 top hat fixture included to allow for use in touring applications

Fine textured polyurethane finish, resistant to scratches and impacts, perfect for high traffic public environments

### SPECIFICATIONS

Frequency response	38 Hz - 160 Hz $\pm 3$ dB
Efficiency	101 dB 1W/1m
Crossover points	80 Hz - 160 Hz active
Nominal impedance	4 ?
Power handling	1000 W AES
Maximum output	134 dB cont, 140 dB peak
Driver configuration	2x 15" LF
Connectors	1x Phoenix with link out and 1x speakON™ with link out
Weight	62,5 kg (137.8 lbs)
Dimensions (W x H x D)	868mm x 454mm x 636mm
Enclosure	15 mm birch plywood
Mounting	Optional M20 top hat fixing point

VENU 215v2

# REFLEX SUBWOOFER WITH DOUBLE 15" TRANSDUCER, 4 ?, 1000 W (BLACK)

---

Finish	Textured polyurethane
Grille	Perforated steel with foam filter
Colors	Black