

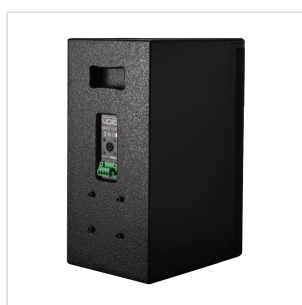
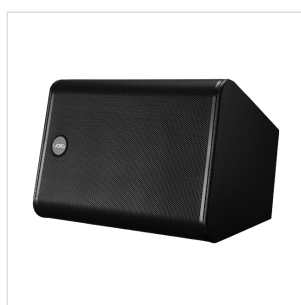
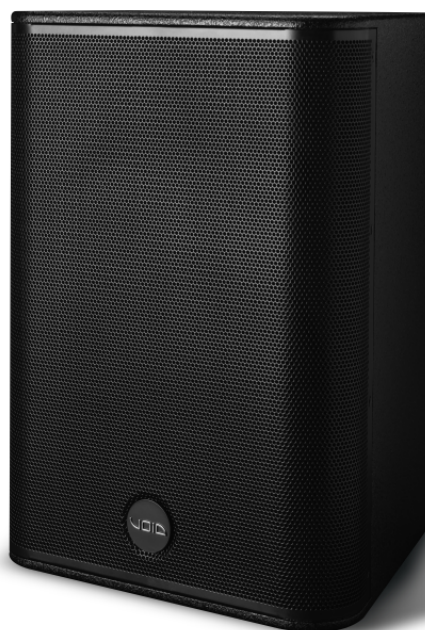
VENU 12v2

COMPACT PASSIVE TWO-WAY 12" LOUDSPEAKER WITH ROTATABLE ASYMMETRICAL HORN (BLACK)

The Venu 12 V2 is a compact passive loudspeaker designed to deliver high audio performance and versatile installation options. Featuring a 12" low frequency driver and a 1" compression driver mounted on a rotatable elliptical horn, it offers an extended frequency response from 60 Hz to 20 kHz ± 3 dB with 98 dB sensitivity, delivering clear, detailed sound across a wide range of environments.

Its robust enclosure, made entirely from 15 mm multi-laminate birch plywood, is finished with a durable textured polyurethane "TourCoat." The Venu 12 V2 is designed for easy and secure installation with dual speakON™ and Phoenix connectors featuring link-through, plus integrated M8 flying points. An optional top hat allows for touring applications.

Ideal for hotels, restaurants, bars, and lounges, this speaker combines high-quality sound with a discreet and customizable design, including color options.



VENU 12v2

COMPACT PASSIVE TWO-WAY 12" LOUDSPEAKER WITH ROTATABLE ASYMMETRICAL HORN (BLACK)

HIGHLIGHTS



EXTENDED FREQUENCY RESPONSE 60 HZ - 20 KHZ ± 3 DB FOR DETAILED AND NATURAL SOUND REPRODUCTION

The Venu 12 provides a wide and precise coverage across the audio spectrum, extending from low frequencies to high treble with excellent linearity. This ensures an audio playback rich in detail and naturalness, ideal for applications where clarity and sound fidelity are crucial.

ROTATABLE HIGH-FREQUENCY HORN FOR OPTIMAL DIRECTIVITY AND ADAPTABLE COVERAGE

The high-frequency driver's horn is designed to be easily rotated, allowing precise and flexible orientation of the sound field. This enables adaptation of the sound dispersion to the specific environment, enhancing acoustic coverage while minimizing unwanted reflections or dead zones.



VENU 12v2

COMPACT PASSIVE TWO-WAY 12" LOUDSPEAKER WITH ROTATABLE ASYMMETRICAL HORN (BLACK)



CUSTOM COLORS AVAILABLE UPON REQUEST

The Venu 12 is ingeniously enhanced in aesthetics as well as functionality thanks to its colour customisation providing the chance to own a bespoke product that will compliment any location (the colors visible in the image are examples for illustrative purposes)

VENU 12v2
 COMPACT PASSIVE TWO-WAY 12” LOUDSPEAKER WITH
 ROTATABLE ASYMMETRICAL HORN (BLACK)

PRODUCT DETAILS

KEY FEATURES

- SpeakON™ and Phoenix connectors with link-through for fast, reliable installation
- Electronic HF protection for increased long-term reliability
- Integrated M8 flying points for flexible and secure suspension
- Custom colors available upon request
- Durable 15 mm birch plywood enclosure with textured polyurethane finish

SPECIFICATIONS

Frequency Response	60 Hz - 20 kHz ±3 dB
Efficiency	98 dB 1W/1m
Crossover Points	2.1 kHz passive
Nominal Impedance	8 ?
Power Handling	400 W AES
Maximum Output	124 dB cont, 130 dB peak
Driver Configuration	1x 12” LF, 1x 1” HF compression driver
Dispersion	90°-40°H x 60°V rotatable
Connectors	1x Phoenix with link out and 1x speakON™ with link out
Weight	22 kg (48.5 lbs)
Dimensions (W x H x D)	370mm x 522mm x 340mm
Enclosure	15 mm birch plywood

VENU 12v2

COMPACT PASSIVE TWO-WAY 12" LOUDSPEAKER WITH ROTATABLE ASYMMETRICAL HORN (BLACK)

Finish	Textured polyurethane
Grille	Perforated steel with foam filter
Rigging	Yoke bracket positions 4 x M8 fixing points for type 80 plate Optional top hat
Colors	Black (custom colors available upon request)