

NEXUS 6**TWO-WAY ACOUSTIC ARRAY WITH 20 TRANSDUCERS
(12X6.5" LF, 8X1" HF) AND VIRTUAL ARC TECHNOLOGY
(RED)**

Designed for large-scale environments such as outdoor main stages, large clubs, or high-density festival crowds, the Nexus 6 is a highly advanced four-way loudspeaker system, featuring 20 high-power drivers housed in a monolithic fibreglass composite enclosure. The sculpted design of the module is not only aesthetic—it also optimizes internal transducer placement and airflow, enhancing both mechanical performance and thermal efficiency.

Its most distinctive feature is the Virtual Arc technology, which creates a common virtual acoustic emission point at the rear of the array.

It can be stacked on LF modules to create dancefloor stacks or flown using the proprietary rigging system, always maintaining a professional and highly recognisable look. It integrates seamlessly into high-end audio systems, where acoustic performance, engineering precision, and visual identity must coexist without compromise.



NEXUS 6

TWO-WAY ACOUSTIC ARRAY WITH 20 TRANSDUCERS (12X6.5" LF, 8X1" HF) AND VIRTUAL ARC TECHNOLOGY (RED)

HIGHLIGHTS



ANTI-RESONANCE STRUCTURE FOR GREATER CLARITY

Due to its structure and construction (with fiberglass cabinet), Nexus 6 allows for a clear and reliable response while consistently reducing resonances.

VIRTUAL ARC TECHNOLOGY

Each driver in the Nexus 6 operates within an advanced architecture that simulates **a single acoustic emission point located behind the array**. This ensures **complete coherence in phase, dispersion, and timing**, dramatically enhancing clarity and impact **at any audience position**.



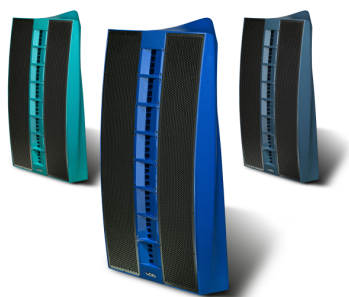
NEXUS 6

**TWO-WAY ACOUSTIC ARRAY WITH 20 TRANSDUCERS
(12X6.5" LF, 8X1" HF) AND VIRTUAL ARC TECHNOLOGY
(RED)****20 PROPRIETARY HIGH-POWER
TRANSDUCERS**

The internal configuration—**12 x 6.5" woofers and 8 x 1" compression drivers**—delivers stunning detail and power across the entire frequency spectrum. Each driver is custom-engineered to achieve **efficiency, accuracy, and dynamic response**, even under extreme conditions.

**FULLY INTEGRATED ACOUSTIC AND
INDUSTRIAL DESIGN**

From **internal layout to exterior form**, every element has been developed as part of a unified system. The result is a loudspeaker that **makes no compromises** between function and form, serving as both **a precision tool and a visual statement** for high-end audio environments.

**CUSTOM COLORS AVAILABLE UPON
REQUEST**

In addition to the 3 iconic Void brand colors -red, white and black- Nexus 6 can be produced in several other custom colors (the colors visible in the image are examples for illustrative purposes)

NEXUS 6

TWO-WAY ACOUSTIC ARRAY WITH 20 TRANSDUCERS (12X6.5" LF, 8X1" HF) AND VIRTUAL ARC TECHNOLOGY (RED)

PRODUCT DETAILS

KEY FEATURES

Visually striking appearance for style-led environments

20 proprietary driver units

Stack mounted or proprietary flying system

Fibreglass composite construction

Controlled dispersion: 110° horizontal x 50° vertical

SPECIFICATIONS

Frequency Response	120 Hz - 21 kHz ±3dB
Efficiency	105dB 1w/1m LF, 110dB 1w/1m HF
Crossover Point	1.6 kHz active
Impedance	LF 2x 5.3 Ω, HF 2x 4 Ω
Power Handling	LF 2x 1350 W AES, HF 2x 160 W AES
Maximum Output	137dB cont, 143dB peak
Driver Configuration	12x 6.5" LF, 8x 1" HF compression driver
Dispersion	110°H x 50°V
Connectors	1x 8-pole speakON™ NL8
Dimensions (W x H x D)	562mm x 1267mm x 430mm
Weight	75.5 kg (166.5 lbs)
Enclosure	Fibreglass composite

NEXUS 6

TWO-WAY ACOUSTIC ARRAY WITH 20 TRANSDUCERS (12X6.5" LF, 8X1" HF) AND VIRTUAL ARC TECHNOLOGY (RED)

Rigging	Stack mounted or proprietary flying system
Finish	Smooth cellulose
Color	Red