

SPIRE LS10000-SET

**4 X LASER BEAM CENTOLIGHT MOVING HEAD 280 W
WITH FLIGHT CASE**

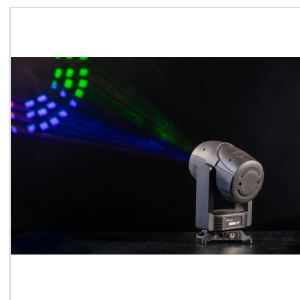
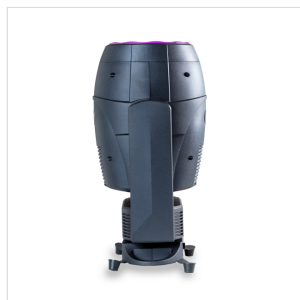
This Laser Beam moving head of the Spire Series is an ultra compact, lightweight and stylish moving head with a White Laser source, integrated with a unique high resolution optical system and a magic and vivid dynamic lighting effect with the 30x 0.2W 3-In-1 RGB LEDs strip light on the head.

The fixture features a 0.7° beam angle which helps to provide an ultra long-throw beam effect that is close to a parallel beam, and it is designed with a range of effects: 19 static gobos, 17 dichroic colors, 6-color wheel, 2 prism wheels with a total of 4 different prism, frost, focus, etc. The **Spire LS10000** provides a 360° continuous, fast and smooth Pan/Tilt movement with variable speed which delivers an even more vivid visual effect to the show. It supports DMX and RDM (Remote Device Management) control.

The fixture's exterior housing is beautifully balanced and based on a modern design philosophy, with a supremely harmonious interior structure for remarkable control.

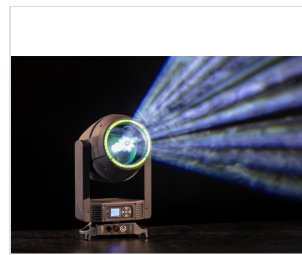
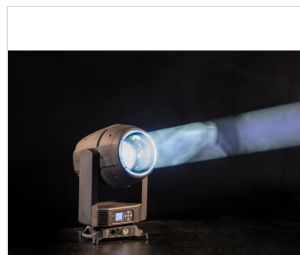
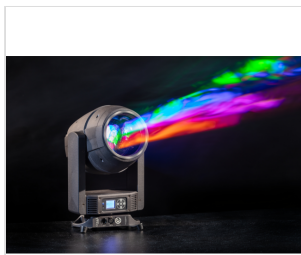
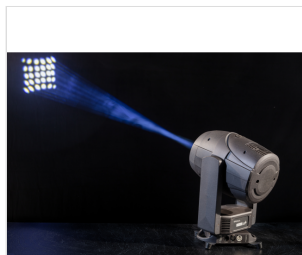
The body of the **Spire LS10000** has more than just a striking look, the 2 fastening omega clamps, available for vertical and horizontal plug-in, make installations fast and easy.

Its fast and quiet operation makes the Spire LS10000 a perfect option for indoor application like small concerts, conference halls, Live events and Club.



SPIRE LS10000-SET

4 X LASER BEAM CENTOLIGHT MOVING HEAD 280 W WITH FLIGHT CASE



SPIRE LS10000-SET

4 X LASER BEAM CENTOLIGHT MOVING HEAD 280 W WITH FLIGHT CASE

HIGHLIGHTS



MID-AIR EFFECT WITH MORPHING FUNCTION

The range of effect is very wide and complete: 1 gobo wheel with 19 gobos, 2 wheel with 4 prisms on two different channel and independently rotating in both direction which can be overlapped creating morphing effects, 17 colour and a 6 colour effect wheel. All these effects are enhanced by the **Laser** source and by the visibility of the aerial colours, giving birth to never seen before mid-air effect.

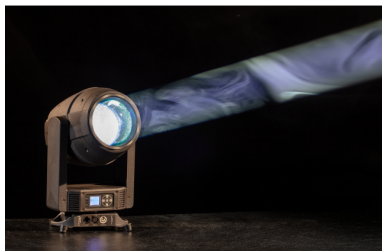
EXTREMELY LIGHT AND COMPACT

Spire **LS 10000** is a ultra compact, lightweight and stylish moving head and thanks to **Centolight** innovative White Laser source, it's size is just 268 x 207 x 423.7 mm (10.55 x 8.15 x 16.68 in) and weight 9.7 kg - 21.38 lbs.



SPIRE LS10000-SET

4 X LASER BEAM CENTOLIGHT MOVING HEAD 280 W WITH FLIGHT CASE



LASER LAMP WITH HIGH ENERGY EFFICIENCY

Its power consumption and luminous efficiency are excellent. The Laser lamp need only 100 Watt, the equivalent of a low consumption fixture, but the resulting light output easily exceeds various high-power moving light. The Laser source lasts for approximately 30.000 hours (the normal life of more then 15 years of use of a Rental company) with minimal decay in luminouse efficiency .

360° ENDLESS PAN AND TILT ROTATION

In addition to the typical features of the Moving head, 540 ° pan and 265° tilt 16 bit rotation, the **LS 10000** delivers a new and exciting function, the **LS 10000** offers endless Pan and Tilt Rotation in both directions, that can be controlled at various speeds.



SPIRE LS10000-SET

4 X LASER BEAM CENTOLIGHT MOVING HEAD 280 W WITH FLIGHT CASE

PRODUCT DETAILS

KEY FEATURES

high efficiency White Laser Lamp 100w

30x 0.2W 3-In-1 RGB front strip LEDs

Lamp Life Span of 30.000 H

Silent operation

Set of high resolution and precise optics with 0.7° Beam angle

360° continuous, fast and smooth Pan/Tilt movement

Color wheel with 17 dichroic colors + white

6-color wheel effect

Neon ring effect with different built-in macro

Static gobo wheel with 19 gobos

2 Prism wheel with 4 Prism and overlapping , morphing effect

0-25Hz shutter/strobe effect

Shielded input signal protection for stable signal without interference

SPECIFICATIONS

Light Sources	high efficiency White Laser Lamp 100w
front LED strip	30x 0.2W 3-In-1 RGB
Color Temperature	6000K
Beam Angle	0.7°

SPIRE LS10000-SET

4 X LASER BEAM CENTOLIGHT MOVING HEAD 280 W WITH FLIGHT CASE

Lamp average lifespan	30.000 hrs
Flicker-free	Yes
Display System	LCD display with selectable language (Chinese or English), reversible
Cooling System	noise-free cooling system
Pan	360° continuous / 540° 8-16 bit low noise
Tilt	360° continuous / 270° 8-16 bit low noise
Control Mode	DMX512/Master-slave/Auto/Sound
Color Wheel	1 color wheel with 17 dichroic colors+white, rainbow effect and variable direction and speed
Color effect wheel	6-colors wheel with variable direction and speed
Static Gobo Wheel	1 static gobo wheel with 19 gobos+white
1 Prism Wheels	8-facet circular prism with variable speed and direction
2 Prism Wheel	6-facet linear prism/16-facet circular prism/8+16-facet circular prism with variable speed and direction
Effect on Prism	overlapping , morphing effect
Circle Effect	ring effect with different built-in macro effects with variable speed
Dimmer/Strobe	0%-100% Dimmer, 0-25Hz shutter/strobe with variable speed
DMX control	25CH / 28CH modes
Voltage	100-240V,50-60Hz
Power Consumption	90W
Working Temperature	-25°C to 45°C
Dimensions (WxDxH)	268 x 207 x 423.7 mm (10.55 x 8.15 x 16.68 in)
Weight	9.7 kg - 21.38 lbs.
Package Size (WxDxH)	530*720*740 mm
Package Weight	66 kg.