

AIRTEN V3 RED

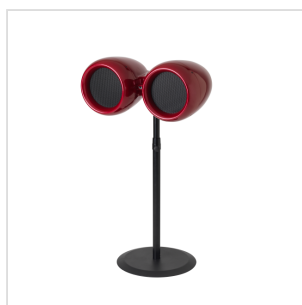
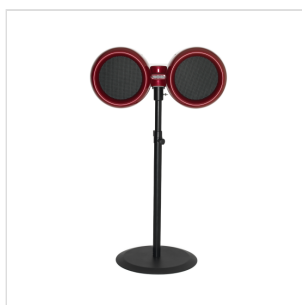
DIFFUSORE COASSIALE PASSIVO CON DOPPIO WOOFER DA 10" (RED)

Inspired by jet engine design, the Airten V3 is a compact, high-output loudspeaker that fuses ultramodern aesthetics with cutting-edge acoustic technology. Its fiberglass composite enclosure and smooth cellulose finish deliver both visual impact and acoustic performance.

It features two 10" low-resonance woofers and a space-saving coaxial MF/HF driver, ensuring consistent and focused sound projection. The 80° x 80° dispersion pattern offers excellent intelligibility across various applications such as DJ monitoring, professional installations, and compact PA setups.

The newly designed passive crossover enhances frequency linearity and driver coherence, while the FEA-optimized rear port improves airflow, reducing power compression, noise, and distortion.

With a 500 W AES power rating and a peak SPL of 131 dB, the Airten V3 delivers outstanding performance in a compact, iconic enclosure.



AIRTEN V3 RED

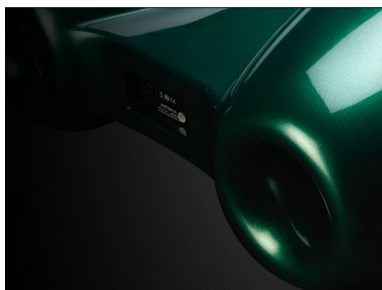
DIFFUSORE COASSIALE PASSIVO CON DOPPIO WOOFER DA 10" (RED)



AIRTEN V3 RED

DIFFUSORE COASSIALE PASSIVO CON DOPPIO WOOFER DA 10" (RED)

HIGHLIGHTS

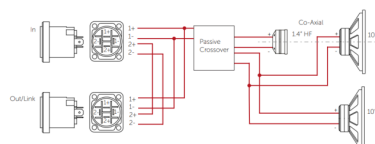


REAR REFLEX PORT FEA SIMULATIONS GUARANTEED

The rear reflex port, optimized through FEA simulations, is designed to improve airflow and reduce dynamic compression. This results in cleaner low-frequency response, lower distortion and consistent performance even at high volumes.

REFINED CROSSOVER FOR COHERENCE AND BALANCE

The new crossover ensures a **smooth summation** between the drivers, with **linearity of response and natural transition between frequencies**. This makes the sound **more natural, hi-fi, less tiring** to listen to.



AIRTEN V3 RED

DIFFUSORE COASSIALE PASSIVO CON DOPPIO WOOFER DA 10" (RED)



LOW-RESONANCE FIBREGLASS COMPOSITE CONSTRUCTION

The use of **fibre-glass material** ensures a **rigid and stable enclosure**, minimizing cabinet resonance and contributing to **clearer and more accurate audio reproduction**.

CUSTOM COLORS AVAILABLE UPON REQUEST

In addition to the 3 iconic Void brand colors -red, white and black- Airten V3 can be produced in several other custom colors (the colors visible in the image are examples for illustrative purposes)



AIRTEN V3 RED

DIFFUSORE COASSIALE PASSIVO CON DOPPIO WOOFER DA 10" (RED)

PRODUCT DETAILS

KEY FEATURES

- Dual 10" low-resonance woofers: deliver powerful, defined low-frequency response in a compact chassis.
- Coaxial MF/HF driver: delivers a compact, coherent and focused sound, thanks to the optical alignment between mid and high frequencies.
- Focused 80°H x 80°V dispersion pattern
- Upgraded crossover: ensures better frequency linearity, driver coherence and accurate summation, for a natural and balanced sound.
- Fiberglass composite construction with smooth cellulose finish: premium look, lightweight yet strong, designed to last and withstand harsh conditions.
- Integrated mounting system: facilitates installation and allows for multiple setup configurations.

SPECIFICATIONS

Frequency Response	60 Hz - 20 kHz \pm 3 dB
Efficiency	99 dB 1w/1m (Measured in half space)
Crossover Points	Passive 1.2 kHz
Impedance	4 Ohm
Power Handling	500 W AES (AES2 - 1984 compliant)
Maximum Output	125 dB cont, 131 dB peak (Calculated)
Driver Configuration	2 x 10" LF, 1 x 1.3" HF compression driver
Dispersion	80°H x 80°V
Connectors	2 x 4-pole speakON™ NL4

AIRTEN V3 RED

DIFFUSORE COASSIALE PASSIVO CON DOPPIO WOOFER DA 10" (RED)

Weight	20 kg (44.1 lbs)
Enclosure	Fibreglass composite
Rigging	Integral mounting system
Finish	Smooth cellulose
Colors	Red (custom colors available upon request)
Dimensions (W x H x D)	682mm x 303mm x 366mm