

AIR VANTAGE WHITE PASSIVE POINT SOURCE LOUDSPEAKER WITH 12" COAXIAL DRIVER (WHITE)

Air Vantage is more than a speaker: it is a statement of style and performance. Designed for **sophisticated environments** such as **high-end clubs, lounge bars, and exclusive venues**, this speaker combines **striking design** with **impeccable sound performance**. With its **point source radiation**, it ensures **even coverage and clarity** even in **acoustically challenging environments**, while the **controlled dispersion** reduces **unwanted reflections** and keeps the sound **focused on the audience**.

Multifunctional, it can be used either as a **stand-alone mid-top** combined with **low-frequency control units** in a club system, or as **DJ monitoring** coupled with the **Vantage Sub**.

The **fiberglass cabinet** provides **structural strength** and **low resonances**, contributing to a **cleaner, more natural sound**. In addition, the **ability to choose custom colorations** makes the Air Vantage perfectly **integrable into any aesthetic context**, transforming it into a **scenic as well as functional element**.

Multifunctional, it can be used either as a **stand-alone mid-top** combined with **low-frequency control units**, or as a **DJ monitoring unit** coupled with the **Vantage Sub**—ready to make a difference, **both visually and acoustically**.

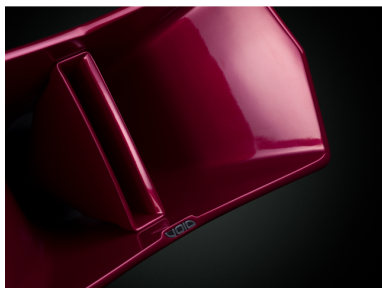


AIR VANTAGE WHITE
**PASSIVE POINT SOURCE LOUDSPEAKER WITH 12"
COAXIAL DRIVER (WHITE)**



AIR VANTAGE WHITE PASSIVE POINT SOURCE LOUDSPEAKER WITH 12" COAXIAL DRIVER (WHITE)

HIGHLIGHTS



LOW-RESONANCE FIBREGLASS COMPOSITE CONSTRUCTION

The use of **fibreglass material** ensures a **rigid and stable enclosure**, minimizing cabinet resonance and contributing to **clearer and more accurate audio reproduction**.

TRUE POINT SOURCE RADIATION

Engineered to deliver **coherent and focused sound**, its point source behavior ensures **consistent tonal balance** across the coverage area (H.70° / V.40°).



AIR VANTAGE WHITE PASSIVE POINT SOURCE LOUDSPEAKER WITH 12" COAXIAL DRIVER (WHITE)

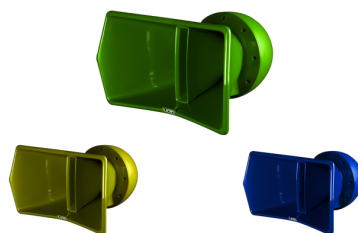


DUAL-PURPOSE DESIGN

The Air Vantage is designed for **versatile use**, functioning both as a **front of house speaker** and a **DJ monitor**. This flexibility makes it ideal for venues seeking great sound without sacrificing aesthetics.

CUSTOM COLORS AVAILABLE UPON REQUEST

In addition to the 3 iconic Void brand colors -red, white and black- Air Vantage can be produced in several other custom colors (the colors visible in the image are examples for illustrative purposes)



AIR VANTAGE WHITE

PASSIVE POINT SOURCE LOUDSPEAKER WITH 12" COAXIAL DRIVER (WHITE)

PRODUCT DETAILS

KEY FEATURES

True point source radiation: the acoustic design ensures coherent and centered emission, with controlled dispersion that ensures uniformity of timbre throughout the room, even at a distance.

Optimized dispersion control: The waveguide and internal architecture are designed to provide precise and predictable coverage (70°H x 40°V), ideal for environments requiring direct control of the diffusion, such as high-end clubs and lounge bars.

Aesthetics with a strong visual impact: the smooth cellulose finish and sculptural design make the Air Vantage a true design object, capable of capturing attention and becoming an integral part of the aesthetic identity of the room.

SPECIFICATIONS

Frequency Response	140 Hz - 20 kHz ±3 dB
Efficiency	100 dB 1W/1m
Crossover Point	1.6 kHz Passive
Nominal Impedance	8 ohms
Power Handling	500 Watts AES
Maximum Output	126 dB cont
Driver Configuration	1x12" - 1x1.5" coaxial
Mounting	Tilt Adjustable Mount (optional)
Dispersion	70°H x 40°V
Connectors	1 x 4 pole speakON NL4
Enclosure	Smooth Cellulose
Dimensions (WxHxD)	718.5x415x660 mm

AIR VANTAGE WHITE

PASSIVE POINT SOURCE LOUDSPEAKER WITH 12" COAXIAL DRIVER (WHITE)

Weight

23,5 kg (51.8 lbs)

Colors

White (Custom colours available upon request)