

## HYPER BASS 15 PRO

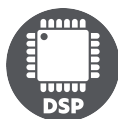
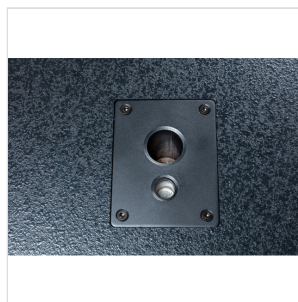
# 15" 3600W PEAK POWER ACTIVE SUBWOOFER

The Hyper Bass 15 Pro and Hyper Bass 18 Pro are high-performance active subwoofers designed to deliver exceptional low-frequency reinforcement for professional sound applications. Engineered with power and precision in mind, these subwoofers provide an impressive 1200W RMS (3600W peak) output, making them ideal for live events, DJ performances, and large-scale venues.

With frequency responses ranging from 35Hz to 150Hz and capable of reaching maximum SPL levels of 127 dB (Hyper Bass 15 Pro) and 130 dB (Hyper Bass 18 Pro), they produce deep, tight bass that complements full-range audio systems.

The 15" (Hyper Bass 15 Pro) and 18" (Hyper Bass 18 Pro) robust woofers are driven by a Class-D integrated amplifier, ensuring powerful, distortion-free performance even at high sound pressure levels.

Whether for concerts, clubs, or large events, the Hyper Bass 15 Pro and Hyper Bass 18 Pro offer the power, durability, and flexibility required by modern audio professionals.



## HYPER BASS 15 PRO

# 15" 3600W PEAK POWER ACTIVE SUBWOOFER

### HIGHLIGHTS

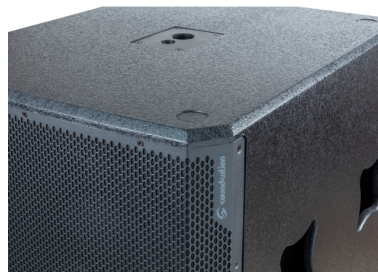


### DSP FOR VERSATILITY AND MAXIMUM SECURITY

DSP-based crossover with 90 or 120Hz cutoff and 0° or 180° phase. Balanced XLR stereo inputs and outputs. Outputs can function as either bandpass or filtered outputs by pressing the Output Mode button. II DSP provides maximum thermal, signal and overdrive protection under all conditions.

### STRONG AND CLEVER

Constructed with 18mm plywood and protected by a rugged steel grille, the subwoofers are built to withstand the rigors of professional use. Additional features include four recessed handles for easy transport, an M20/36mm dual pole-mount adapter for satellite speakers, and optional (not included) rear-mounted castors for added mobility.



# HYPER BASS 15 PRO

## 15" 3600W PEAK POWER ACTIVE SUBWOOFER

### PRODUCT DETAILS

#### KEY FEATURES

High-performance Active Subwoofer

Class-D integrated amplifier delivering up to 1200W RMS and 3600W Peak power

Maximum SPL level of 127 dB

Phase control (0° / 180°) for improved low-frequency performance

Adjustable crossover frequency (120Hz / 90Hz)

Selectable output modes: Link or X-Over Out

M20/36mm dual pole-mount adapter

M8 holes on the rear panel for optional castor installation

#### SPECIFICATIONS

Frequency response	35Hz-150Hz
--------------------	------------

Power output (RMS/peak)	1200W/3600W
----------------------------	-------------

Amplification	Class D
---------------	---------

Max. SPL (peak)	127 dB
-----------------	--------

LF transducer	15"Woofer, 4" Voice coil
---------------	--------------------------

LF transducer Impedance	8ohms
----------------------------	-------

Controls	Sub Level, Phase (0° / 180°), X-Over Frequency (120Hz / 90Hz, Output Mode (Link / X-Over Outs)
----------	--

Connectors	Balanced Inputs (XLR), Balanced Outputs (XLR), Power Input (VDE)
------------	--

Cabinet construction	18mm Plywood
----------------------	--------------

## HYPER BASS 15 PRO

# 15" 3600W PEAK POWER ACTIVE SUBWOOFER

Cabinet surface	Polyurea
Grille Material	Steel
Grille Thickness	1.5 mm
Handles	4 recessed (2 on each side)
Pole Mount	M20 Adapter on Top
Castors	Optional (rear panel mounting)
Subwoofer Dimensions (W*H*D)	498 x 647 x 640 mm
Package Dimensions (W*H*D)	725 x 583 x 735 mm
Net Weight	42.5 kg
Gross Weight	47 kg