

## PROVIBE 10AIR 10" 2-WAY PORTABLE PA SYSTEM WITH BATTERY AND MOBILE APP

ProVibe 10Air is certainly inspired by Soundsation's style in making compact PA systems, but it's also a turning point with renewed look and professional features. Battery or power supply, VHF wireless microphone, Player with USB/SD-card/Bluetooth, Mic/Line inputs, 2-Band EQ are combined in a lightweight yet rough and elegant housing. Control via free "**Go-Sound Air**" app for Android® and iOS® devices allows your device to play your music, but also remotely control volume, EQ and Aux input.

The 10" woofer and 1" compression driver are driven by a Class D amplifier with peak power up to 360W. In addition to the external power adapter (included) and the internal rechargeable battery with up to 6 hours duration, is also possible with 12V DC auxiliary input, like a car battery.

The housing, with stylish and professional look, has a vented architecture with bass-reflex ports. The symmetric HF waveguide has 90° (H) x 60° (V) coverage. The speaker can be used as stage monitor, thanks to the 45° or 25° angle of housing rear. Finally, there are 3 M8 attachment points for hanged mounting, and 36mm hole for pole or tripod mounting.



PROVIBE 10AIR

# 10" 2-WAY PORTABLE PA SYSTEM WITH BATTERY AND MOBILE APP

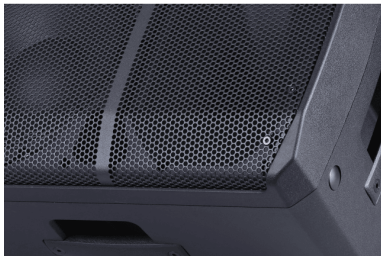
---



PROVIBE 10AIR

# 10" 2-WAY PORTABLE PA SYSTEM WITH BATTERY AND MOBILE APP

## HIGHLIGHTS



### ELEGANCE, COMPACTNESS AND RELIABILITY. IN SHORT: PROVIBE!

Its purpose is not only to emit sounds and vibrations, but also to create music, convey emotions, exchange ideas, and promote knowledge. At Soundsation, we believe that ProVibe should align with contemporary aesthetic canons, characterized by essential and elegant lines. We believe that beauty should not compromise practicality or longevity. We have created a new range of active loudspeakers that take these concepts to a professional level, starting with simple vibration. In short: ProVibe!

## KEYWORD: PORTABILITY

ProVibe Air is a significant advancement towards the idea of complete freedom, without any limits to communication, music, or sharing emotions.

It has an internal battery that can be powered by a car battery or external power source, providing an operating autonomy from 6 up to 7 hours depending on the model. Cables are practically unnecessary with one or two wireless microphones (according to the model) and the USB, SD-Card and Bluetooth media player. However, traditional cable connection is still possible through the 1/4" jack and RCA inputs for musical instruments, microphones or other sources that require it.



**PROVIBE 10AIR**

# 10" 2-WAY PORTABLE PA SYSTEM WITH BATTERY AND MOBILE APP

---



## GO-SOUND AIR APP AND BLUETOOTH

Nowadays, our tablets and mobile phones have become the primary tools for music, parties, and other occasions. Some of the latest devices no longer have an analogue output, which means that they require adapters (often bulky and expensive) or Bluetooth interfaces to connect to regular audio speakers. ProVibe Air's Digital Media Player provides solutions to these and many other needs. In addition to the standard Bluetooth connection and USB/SD-Card slots, the player's functions can be controlled through the free Go-Sound Air app for Android® and iOS®, directly from a tablet or smartphone.

PROVIBE 10AIR

# 10" 2-WAY PORTABLE PA SYSTEM WITH BATTERY AND MOBILE APP

## PRODUCT DETAILS

### KEY FEATURES

Sturdy and Stylish Polypropylene Housing

Rechargeable Battery for up to 6 hours Operation

360W Peak Power

VHF Wireless Handheld Microphone

USB/SD-Card/Bluetooth Player

Go-Sound Air App for Android®/iOS®

Infrared Remote Control

36 mm standard pole mount

Compatible with Go-Sound Pocket Mic (Bodypack Kit + Headset + Lavalier Mic)

### SPECIFICATIONS

<b>Speaker Type</b>	10" 2-Way Portable PA System with Battery and Mobile App
<b>Frequency response</b>	65Hz-19KHz
<b>Max. SPL</b>	109 dB
<b>LF</b>	10"
<b>HF</b>	1" Compression Driver
<b>Directivity (HxV) / Horn Type</b>	90° x 60° - Symmetric
<b>Amp. (Program/Peak)</b>	180 W/360W - Class-D
<b>Controls</b>	Mic/Line level, VHF Mic Level, AUX/BT/MP3 level, AUX-MP3 Switch, Master level

# PROVIBE 10AIR

## 10" 2-WAY PORTABLE PA SYSTEM WITH BATTERY AND MOBILE APP

<b>EQ</b>	2-Band EQ, 20-100 Hz, 9K-20KHz (+/- 15dB)
<b>Connections</b>	Mic/Line Combo, AUX Stereo Mini Jack, Line Out L&R RCA Jack
<b>Media player</b>	USB, SD-Card, BT Audio Streaming, LCD Display
<b>App Control</b>	Auxiliary BT connection to Go-Sound Air App for Android®/iOS®
<b>Mains Power</b>	15VDC - 1.5A
<b>Add. Power</b>	External 12VDC (No charge function)
<b>Rechargeable Battery</b>	12V-4500mAh Lead Battery
<b>Charge/Discharge Cycle</b>	4 hours / 6 hours
<b>Wireless Microphones</b>	VHF 175.00MHz
<b>Frequency Response</b>	40Hz – 16kHz / ±3dB
<b>Transmitter Power</b>	10mW
<b>Modulation Type</b>	FM
<b>Battery Voltage</b>	3V (2x1.5V AA-Type Batteries)
<b>Transmitter Continuous Using</b>	7 hours
<b>Handles</b>	1 handle on side; 1 handle on top
<b>Pole Mount</b>	Standard D36 mm
<b>Stage Monitor Use Angle</b>	45° - 25°
<b>Speaker Dimension (WxHxD)</b>	290 x 495 x 283 mm
<b>Packing Dimension (WxHxD)</b>	340 x 550 x 330 mm
<b>Net Weight</b>	8.6 kg
<b>Gross Weight</b>	9.8 kg