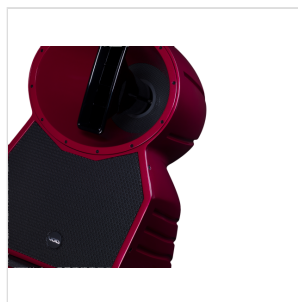
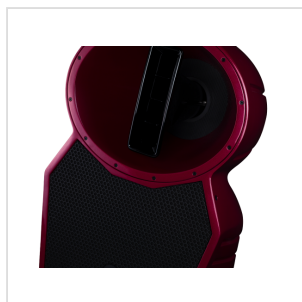
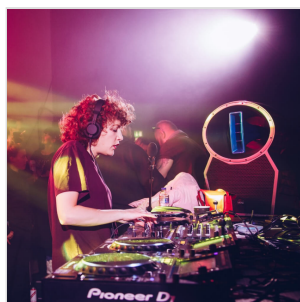


**AIR STREAM RED****3-WAY COMPACT LOUDSPEAKER WITH 15", 12" AND 1.5" DRIVERS POINT SOURCE RADIATION (RED STANDARD COLOR)**

The Air Stream is the perfect balance between bold design and high-level acoustic performance, delivering a compact yet extremely powerful near-field solution for style-led environments. Its three-way configuration, with 15" LF, 12" MF, and a 1.5" HF compression driver, ensures a coherent, articulate and fully balanced sound across the entire frequency range.

Thanks to point source radiation and phase-coherent behaviour, the Air Stream achieves true-to-source playback, while the controlled dispersion (70°H x 45°V) minimizes unwanted reflections and keeps the focus on the audience. The low-resonance fibreglass composite cabinet reduces resonances and maintains clarity even at high SPL levels.

Its compact sculptural design, available in custom colours, makes the Air Stream an ideal choice for high-end nightclubs, lounges, and stylish spaces where sound and design merge seamlessly.



AIR STREAM RED

**3-WAY COMPACT LOUDSPEAKER WITH 15", 12" AND  
1.5" DRIVERS POINT SOURCE RADIATION (RED  
STANDARD COLOR)**

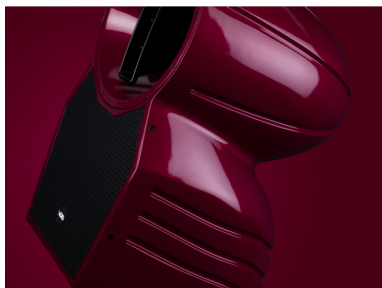
---



AIR STREAM RED

# 3-WAY COMPACT LOUDSPEAKER WITH 15", 12" AND 1.5" DRIVERS POINT SOURCE RADIATION (RED STANDARD COLOR)

## HIGHLIGHTS



### LOW-RESONANCE FIBREGLASS COMPOSITE CONSTRUCTION

The use of **fibreglass material** ensures a **rigid and stable enclosure**, minimizing cabinet resonance and contributing to **clearer and more accurate audio reproduction**.

### POINT SOURCE RADIATION AND PHASE-COHERENT BEHAVIOUR

Thanks to its **unified acoustic source**, sound reaches the listener as if it emanates from a single point in space. This, combined with **phase-coherent design**, results in a **more natural and focused reproduction**, enhancing clarity and spatial depth even in **near-field applications or acoustically complex environments**.



AIR STREAM RED

## 3-WAY COMPACT LOUDSPEAKER WITH 15", 12" AND 1.5" DRIVERS POINT SOURCE RADIATION (RED STANDARD COLOR)

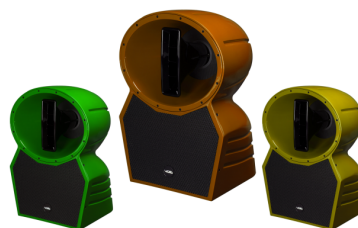


### THREE-WAY CONFIGURATION WITH 15", 12" AND 1.5" DRIVERS

Delivers a **full-range frequency response**, from deep lows to crystal-clear highs. Each transducer handles a specific portion of the spectrum, ensuring **precise frequency separation** and providing a **defined, dynamic and highly detailed sound**, even at high output levels.

### CUSTOM COLORS AVAILABLE UPON REQUEST

In addition to the 3 iconic Void brand colors -red, white and black- Air Stream can be produced in several other custom colors (the colors visible in the image are examples for illustrative purposes)



AIR STREAM RED

# 3-WAY COMPACT LOUDSPEAKER WITH 15", 12" AND 1.5" DRIVERS POINT SOURCE RADIATION (RED STANDARD COLOR)

## PRODUCT DETAILS

### KEY FEATURES

- Optimised for near-field applications: perfect for environments where audience proximity requires focused and balanced coverage.
- Controlled dispersion of 70°H x 45°V: ensures directional control and minimizes room reflections for accurate sound targeting.
- Integrated electronic protection: safeguards the HF driver under heavy use conditions.
- Compact, visually striking design: ideal for premium environments, available in custom colours to match interior aesthetics.

### SPECIFICATIONS

Frequency Response	54 Hz - 20 kHz ±3 dB
Efficiency	LF 106 dB 1W/1m   MHF 108 dB 1W/1m
Crossover Points	Passive 1.6 kHz
Nominal Impedance	LF 8 Ω   MHF 8 Ω
Power Handling	LF 700 W AES   MHF 500 W AES
Maximum Output	127 dB cont, 133 dB peak
Driver Configuration	1x 15" LF   1x 12" MF   1x 1.5" HF compression driver
Dispersion	70°H x 45°V
Protection	Internal Electronic Control
Connectors	1x 4-pole speakON NL4
Weight	42.5 kg (93.7 lbs)
Enclosure	Fibreglass composite
Rigging	Integral mounting system

AIR STREAM RED

# 3-WAY COMPACT LOUDSPEAKER WITH 15", 12" AND 1.5" DRIVERS POINT SOURCE RADIATION (RED STANDARD COLOR)

**Standard color**

Red (custom colors available upon request)

**Dimensions (W x H x D)**

511mm x 743.5mm x 499mm