

GF82T

ULTRA-COMPACT 8X2" LINE ARRAY COLUMN SPEAKER WITH BUILT-IN TRANSFORMER (BLACK)

The GF82T is an ultra-compact column speaker featuring 8x2" drivers, engineered to deliver professional audio performance in a slim and unobtrusive form factor. Equipped with K-array™ PAT® (Pure Array Technology), it provides excellent intelligibility and the focused coverage typical of line array systems, with precise dispersion (15° V | 90° H) over long distances.

With a built-in transformer for constant voltage (70/100V) installations, it supports multiple power tap settings, ensuring maximum flexibility and seamless integration into distributed systems. Its ABS enclosure with IP54 rating makes it suitable for both indoor and outdoor use.

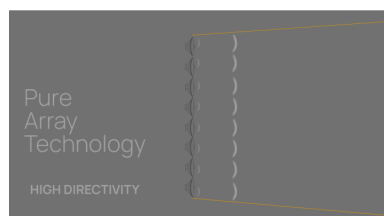
Ideal for permanent installations in hospitality, retail, corporate spaces, and transportation facilities, GF82T can be easily paired with the GS6 subwoofer for full-range musical performance. Weighing only 2.2 kg and featuring a super-compact footprint, it's the perfect solution for those seeking high performance with minimal visual impact.



GF82T

ULTRA-COMPACT 8X2" LINE ARRAY COLUMN SPEAKER WITH BUILT-IN TRANSFORMER (BLACK)

HIGHLIGHTS



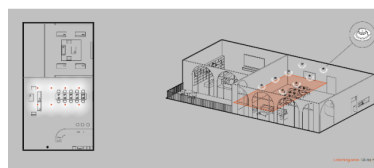
ACCURATE SOUND DISPERSION WITH K-ARRAY™ PAT® TECHNOLOGY

The **K-array™ PAT® (Pure Array Technology)** built into the GF82T system provides **uniform and directional sound coverage**, enhancing audio clarity even in acoustically challenging or crowded environments.

PAT® (Pure Array Technology) uses vertically aligned drivers to generate a cylindrical wavefront, providing **uniform coverage up to 90°** with **directional and coherent dispersion** that minimizes floor and ceiling reflections. Perfect for challenging spaces, it significantly enhances **speech intelligibility and musical clarity**.

COMPATIBILITY WITH CONSTANT VOLTAGE SYSTEMS (70/100V)

Thanks to the integrated transformer and the different selectable taps, it is perfectly suited to installations distributed in public environments.



GF82T

ULTRA-COMPACT 8X2" LINE ARRAY COLUMN SPEAKER WITH BUILT-IN TRANSFORMER (BLACK)



RESISTANT AND VERSATILE (IP54)

The ABS casing makes it suitable for indoor and outdoor installations, increasing the opportunities for use.

GF82T

ULTRA-COMPACT 8X2" LINE ARRAY COLUMN SPEAKER WITH BUILT-IN TRANSFORMER (BLACK)

PRODUCT DETAILS

KEY FEATURES

- 8x2" ultra-compact line array design with K-array™ PAT® technology for superior directivity and clarity
- Compact and discreet design: easily integrates into any environment without impacting on aesthetics, ideal for hospitality, retail and corporate environments.
- Compatible with GS6 subwoofer for enhanced low-frequency extension in music applications

SPECIFICATIONS

Type	speaker passive
Transducers	8x2" ferrite magnet woofer
Frequency Response	150 Hz - 20 kHz (-6dB)
Max SPL	109 dB
Rated Power	4/8/16/32W @100V / 2/4/8/16W @70V
Coverage	V. 15° H. 90°
Connectors	Phoenix connector (5-pin euroblock)
Dimensions (W x H x D)	60x600x65 mm (2.36x23.62x2.56 in)
Weight	2,2 kg (4.85 lb)
Material	ABS
Colors	Black
IP Rating	IP54