

GC8T-SQB

8" PASSIVE CEILING/WALL-MOUNTED HIGH IMPEDANCE SPEAKER (SQUARE GRILLE, BLACK COLOR)

The GC8T is a 2-way passive in-ceiling loudspeaker with a built-in 70/100V transformer, ideal for long-distance distributed systems. The 8" coaxial woofer and 1" titanium tweeter deliver extended response and accurate, vibrant sound, with 130° conical coverage.

Designed for drywall, wood, or other materials, the open-back infinite baffle design ensures consistent performance in any space. Perfect for hotels, schools, offices, retail, or public areas.

The magnetic grille (available in round or square shape, white or black finish, and paintable) blends into any environment. Fully compatible with all 70/100V amplifiers, the GC8T is a powerful, discreet, and scalable solution.



GC8T-SQB

8" PASSIVE CEILING/WALL-MOUNTED HIGH IMPEDANCE SPEAKER (SQUARE GRILLE, BLACK COLOR)

HIGHLIGHTS

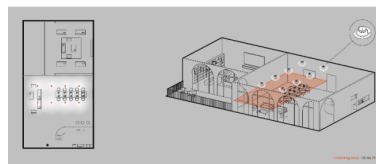


ADJUSTABLE TWEETER FOR CUSTOMIZED LISTENING

The RN (round) version of the GC8T integrates an adjustable tweeter, which allows you **to precisely direct the high frequencies towards the listening area**, for a sound that is always clear and detailed, even in irregular environments or with unconventional configurations. A rare feature in in-wall speakers, which transforms architectural integration into a tailor-made audio experience.

LARGE-SCALE INSTALLATIONS WITHOUT COMPROMISE

Thanks to the integrated transformer for **100V/70V** lines, this high-impedance loudspeaker **allows several speakers to be connected in parallel over long distances without significant loss of power or audio quality**, making it ideal for distributed systems in hotels, shopping centres, schools or public facilities.



GC8T-SQB

8" PASSIVE CEILING/WALL-MOUNTED HIGH IMPEDANCE SPEAKER (SQUARE GRILLE, BLACK COLOR)



FRAMELESS DESIGN FOR SEAMLESS ARCHITECTURAL INTEGRATION

The grille with no visible frame allows the GC8T to virtually disappear after installation, delivering a clean, minimalist aesthetic—ideal for refined interiors or design-sensitive environments.

GC8T-SQB

8" PASSIVE CEILING/WALL-MOUNTED HIGH IMPEDANCE SPEAKER (SQUARE GRILLE, BLACK COLOR)

PRODUCT DETAILS

KEY FEATURES

Wide and uniform diffusion due to 130° conical coverage: perfect for distributed sound in environments where wide and uniform coverage is needed, such as retail, hospitality, public places or conference rooms, as well as in residential and/or private settings.

Balanced audio quality: the coaxial configuration ensures a smooth frequency response (50Hz-20kHz) and better coherence between highs and mids, with a maximum SPL of 112 dB suitable for small- to medium-sized settings.

Titanium tweeter for precision and definition: titanium, due to its light weight and rigidity, allows the tweeter to offer a quick and precise response, with brilliant and defined high frequencies. Ideal in contexts where clarity and intelligibility are essential, such as conferences, acoustic music concerts and public spaces.

Compact and lightweight design: very easy to install in small spaces or ceiling/wall. Ideal for discreet architectural additions.

Simplified installation without any rear box: ideal for plasterboard, wood or tile walls or ceilings, taking advantage of the "infinite baffle" principle, the speaker is isolated at the rear from the large wall or ceiling in which it is installed, preventing the front and rear sound waves from cancelling each other out (phase shift between front and back).

SPECIFICATIONS

Type	Passive loudspeaker
Transducers	8" coax ferrite magnet woofer + 1" titanium dome tweeter
Frequency Response	50Hz – 20KHz (-3dB average)
Max SPL	112dB
Coverage	130° conical
Nominal Impedance	8 ?
Rated Power	32/16/8/4W taps (@100V) - 16/8/4/2W taps (@70V)
Dimensions (W x H x D)	277x258x105 mm (10.9x10.2x4.1 in)

GC8T-SQB

8" PASSIVE CEILING/WALL-MOUNTED HIGH IMPEDANCE SPEAKER (SQUARE GRILLE, BLACK COLOR)

Weight	2.04 kg (4.5 lb)
Material	ABS
Colors	Black