

GC6T-SQW

## 6,5" PASSIVE CEILING/WALL-MOUNTED HIGH IMPEDANCE SPEAKER (SQUARE GRILLE, WHITE COLOR)

The GC6T is a 2-way passive loudspeaker with integrated 70/100V transformer, designed for large-scale distributed systems. Featuring a 6.5" coaxial woofer and 0.75" titanium dome tweeter, it delivers 60 Hz–20 kHz frequency response, 130° coverage, and SPL up to 110 dB.

Its paintable frameless magnetic grille, available in round (GC6T-RN, with rotatable tweeter) or square (GC6T-SQ) versions, allows seamless integration in hotels, schools, conference rooms, or retail environments.

Optimized for infinite baffle operation, it can be installed in drywall, wood, or tile. With a depth of 87 mm and a weight of 1.52 kg, it combines compactness and ease of installation with high performance.

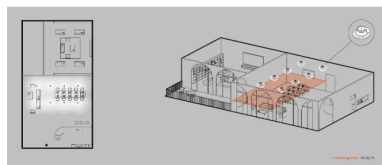
The 70/100V configuration supports multiple speakers in parallel on the same line, making it ideal for scalable distributed systems. The GC6T is compatible with any 70/100V amplifier, with no adapters required.



GC6T-SQW

# 6,5" PASSIVE CEILING/WALL-MOUNTED HIGH IMPEDANCE SPEAKER (SQUARE GRILLE, WHITE COLOR)

## HIGHLIGHTS



### LARGE-SCALE INSTALLATIONS WITHOUT COMPROMISE

Thanks to the integrated transformer for **100V/70V** lines, this high-impedance loudspeaker **allows several speakers to be connected in parallel over long distances without significant loss of power or audio quality**, making it ideal for distributed systems in hotels, shopping centres, schools or public facilities.

### FRAMELESS DESIGN FOR SEAMLESS ARCHITECTURAL INTEGRATION

The grille with no visible frame allows the GC6T to virtually disappear after installation, delivering a clean, minimalist aesthetic—ideal for refined interiors or design-sensitive environments.



GC6T-SQW

# 6,5" PASSIVE CEILING/WALL-MOUNTED HIGH IMPEDANCE SPEAKER (SQUARE GRILLE, WHITE COLOR)

## PRODUCT DETAILS

### KEY FEATURES

Wide and uniform diffusion thanks to the 130° conical coverage: perfect for distributed sound systems in environments where wide and uniform coverage is required, such as retail, hospitality, public places or conference rooms, but also in residential and/or private environments.

Balanced audio quality: The coaxial configuration ensures a uniform frequency response (60Hz–20kHz) and better coherence between highs and mids, with a maximum SPL of 112dB suitable for small to medium environments.

Orientable titanium tweeter for precision and definition: titanium, thanks to its lightness and rigidity, allows the tweeter to offer a rapid and precise response, with bright and defined high frequencies. Ideal in contexts where clarity and intelligibility are essential, such as conferences, acoustic music concerts and public spaces.

Compact and lightweight design: very easy to install in small spaces or on ceilings/walls. Ideal for discreet architectural integrations.

Installazione semplificata senza alcuna scatola posteriore: ideale per pareti o soffitti in cartongesso, legno o piastrelle, utilizzando il principio "infinite baffle", l'altoparlante è isolato posteriormente dalla parete o dal soffitto di grandi dimensioni in cui è installato, evitando che le onde sonore anteriori e posteriori si annullino a vicenda (sfasamento tra anteriore e posteriore).

### SPECIFICATIONS

Type	Passive Fullrange Loudspeaker
Transducers	6,5" coax ferrite magnet woofer with 0.75" titanium dome tweeter
Frequency Response	60Hz-20kHz (-10 db)
Max.SPL?110dB (calculated using a signal with crest factor 4 (12dB) measured at 1 mt)	
Rated Power	4/8/16/32W @ 100V – 2/4/8/16W @ 70V
Coverage	V. 130°   H. 130°
Dimensions (W x H x D)	227x210x87 mm (8.9x8.3x3.4 in)
Weight	1,52 kg (3.3 lb)

GC6T-SQW

## 6,5" PASSIVE CEILING/WALL-MOUNTED HIGH IMPEDANCE SPEAKER (SQUARE GRILLE, WHITE COLOR)

---

Material	ABS
Colors	White
Connectors	Spring terminals
Nominal Impedance	70/100 V